



## **Emergency Evacuation Procedure Maps**

**for:**

Saint Louis Community College  
Harrison Education Center

3140 Cass Ave, St. Louis, MO 63106

## **Evacuation Procedure Maps Contact(s):**

President: Julie Fickas

314-644-9274

Sr. Facility Manager: Dennis Dill

314-984-7740

Police Lt.: Adis Becirovic

314-984-7808

Police Lt.: David Berryman

314-644-9595

EHS Specialist:

**Revised Date:**

12/1/2021

# OFFICES 106D, 106E & 106F ACADEMIC SUPPORT

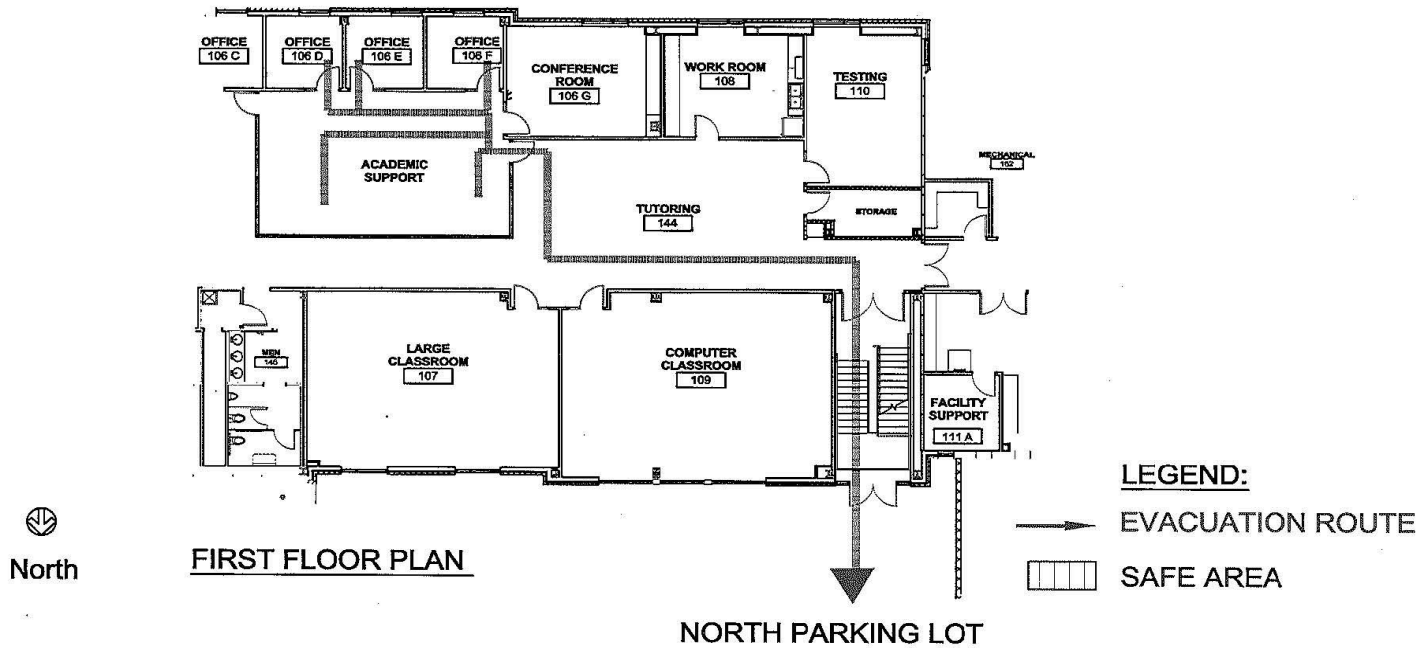
HARRISON EDUCATION CENTER

## BUILDING EVACUATION

1. Follow the evacuation route, as indicated.
2. Exit Building through double doors as shown to  
AREA NORTH PARKING LOT

## SAFE AREA EVACUATION (Tornado/Severe Weather)

1. Proceed to Restroom 141 & 145



# RECEPTION AREA 142

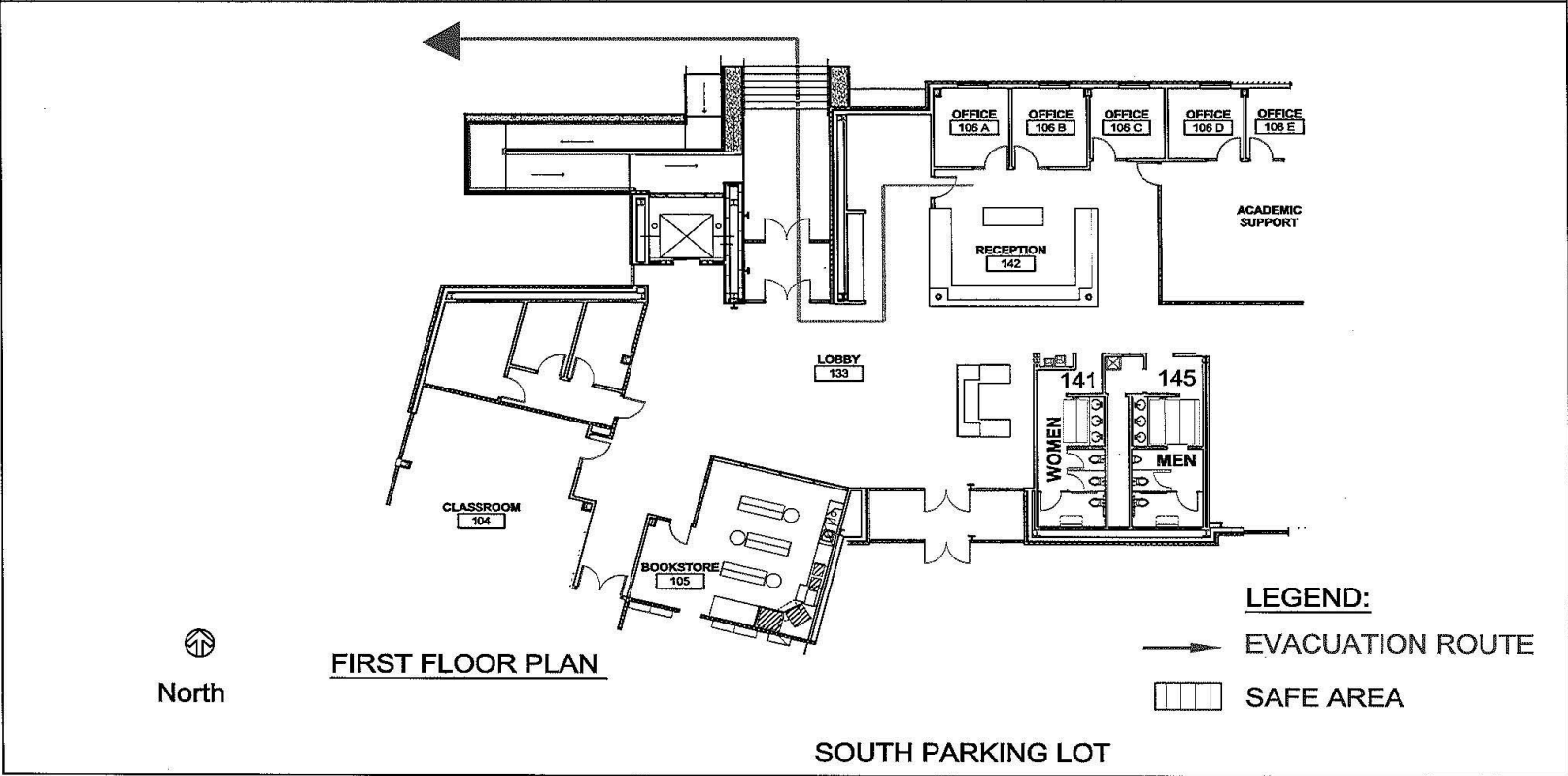
HARRISON EDUCATION CENTER

## BUILDING EVACUATION

- 1. Follow the evacuation route, as indicated.
- 2. Exit Building through double doors as shown to Corner of Case Avenue and Francis Street

## SAFE AREA EVACUATION (Tornado/Severe Weather)

- 1. Proceed to Restroom 141 or 145



# STUDENT COMMONS ROOM 101

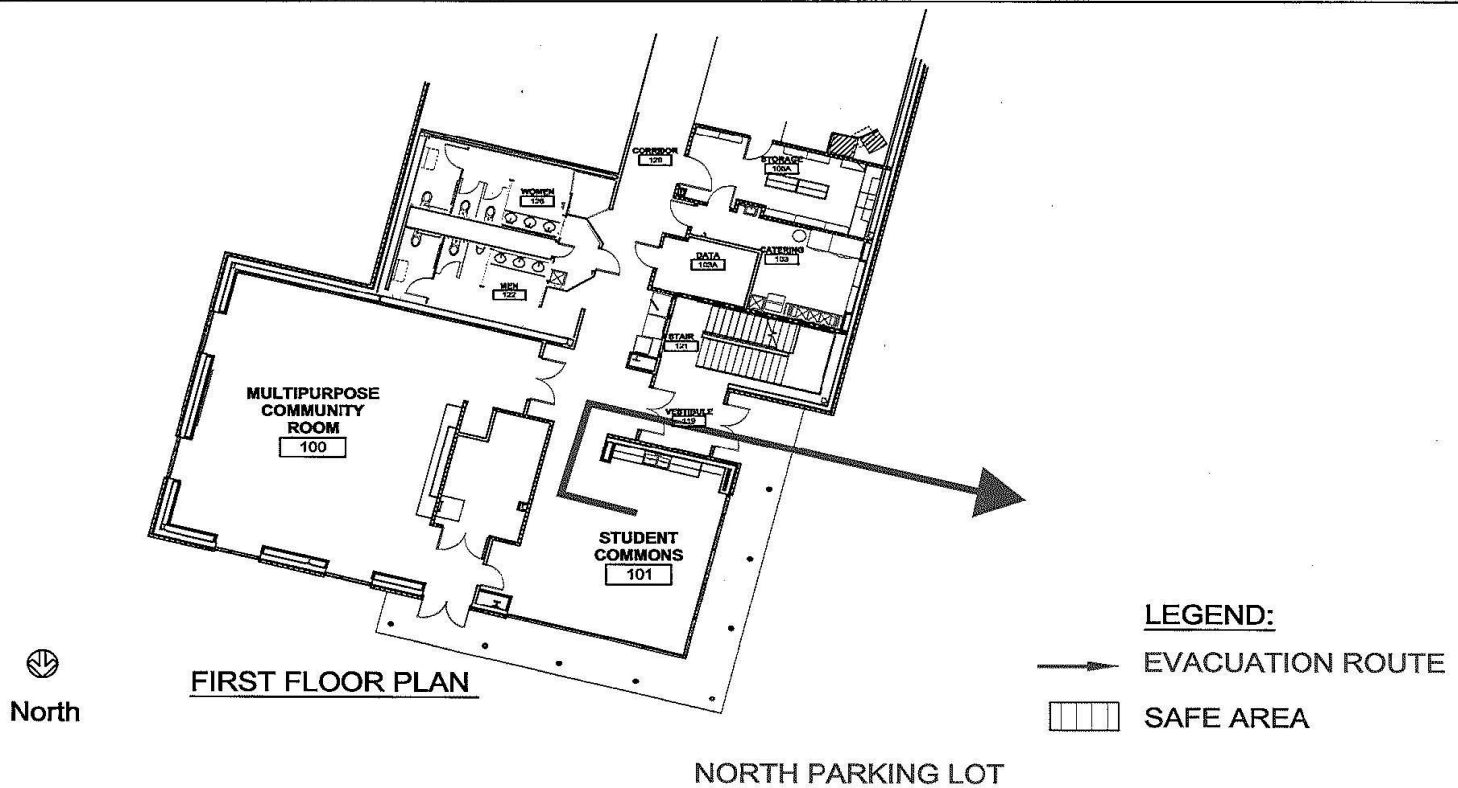
HARRISON EDUCATION CENTER

## BUILDING EVACUATION

1. Follow the evacuation route, as indicated.
2. Exit Building through double doors as shown to  
AREA NORTH PARKING LOT

## SAFE AREA EVACUATION (Tornado/Severe Weather)

1. Proceed to Restroom 122



# TECHNICAL SUPPORT ROOM 201

HARRISON EDUCATION CENTER

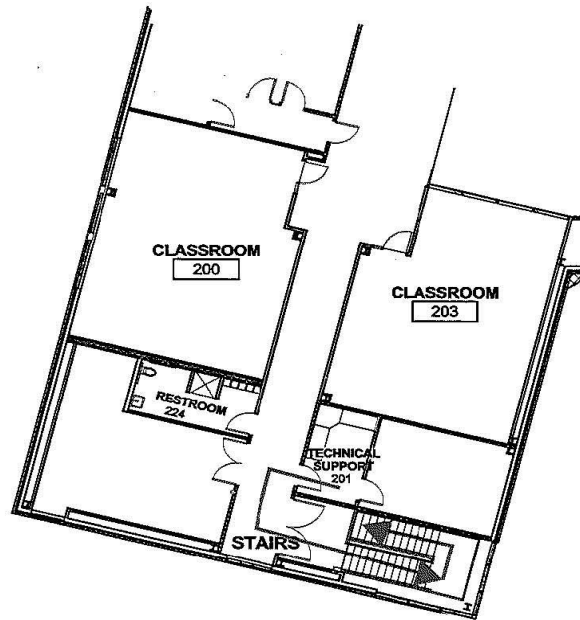
## BUILDING EVACUATION

1. Follow the evacuation route, as indicated, to closest stairwell to First Floor
2. Exit Building through double doors to AREA SOUTH PARKING LOT

## SAFE AREA EVACUATION (Tornado/Severe Weather)

ALL REST ROOMS AND STAIRWELLS ARE SAFE AREAS  
MOVE TO LOWEST POSSIBLE FLOOR LEVEL OF BUILDING

1. Proceed to Restroom 224



North

SECOND FLOOR PLAN

### LEGEND:

→ EVACUATION ROUTE

▨ SAFE AREA

SOUTH PARKING LOT

# CLASSROOM 200

HARRISON EDUCATION CENTER

## BUILDING EVACUATION

1. Follow the evacuation route, as indicated, to closest stairwell to First Floor
2. Exit Building through double doors to AREA SOUTH PARKING LOT

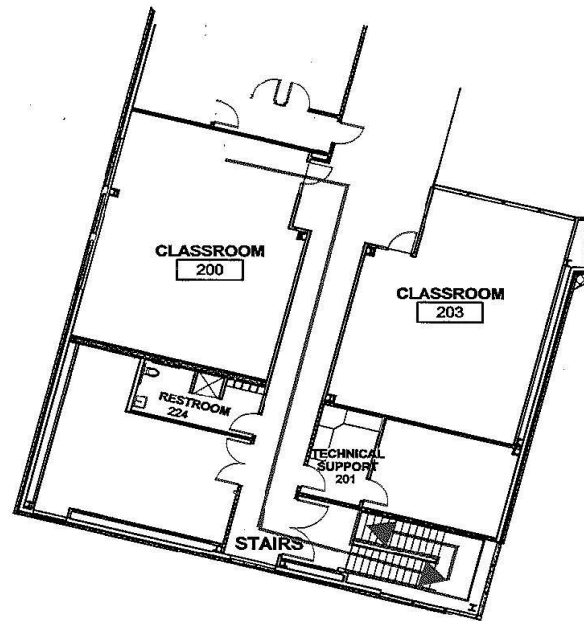
## SAFE AREA EVACUATION (Tornado/Severe Weather)

ALL REST ROOMS AND STAIRWELLS ARE SAFE AREAS  
MOVE TO LOWEST POSSIBLE FLOOR LEVEL OF BUILDING

1. Proceed to Restroom 224



SECOND FLOOR PLAN



### LEGEND:

- EVACUATION ROUTE
- ▨ SAFE AREA

SOUTH PARKING LOT

# CLASSROOM 203

HARRISON EDUCATION CENTER

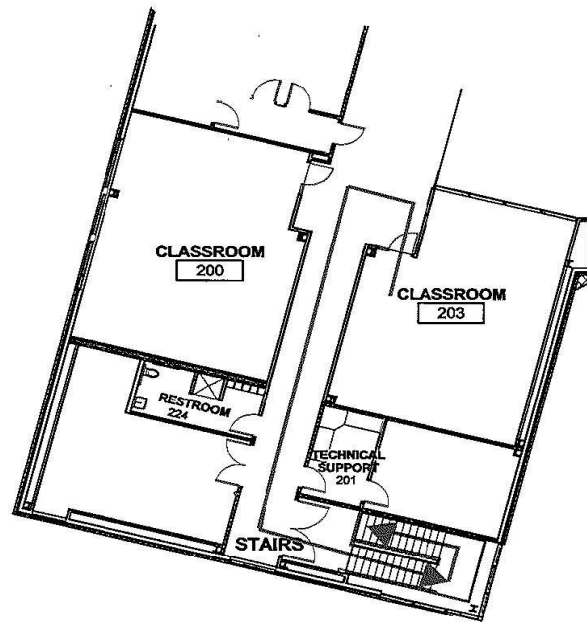
## BUILDING EVACUATION

1. Follow the evacuation route, as indicated, to closest stairwell to First Floor
2. Exit Building through double doors to AREA SOUTH PARKING LOT

## SAFE AREA EVACUATION (Tornado/Severe Weather)

ALL REST ROOMS AND STAIRWELLS ARE SAFE AREAS  
MOVE TO LOWEST POSSIBLE FLOOR LEVEL OF BUILDING

1. Proceed to Restroom 224



North

SECOND FLOOR PLAN

### LEGEND:

→ EVACUATION ROUTE

▨ SAFE AREA

SOUTH PARKING LOT

# COMPUTER CLASSROOM ROOM 209

HARRISON EDUCATION CENTER

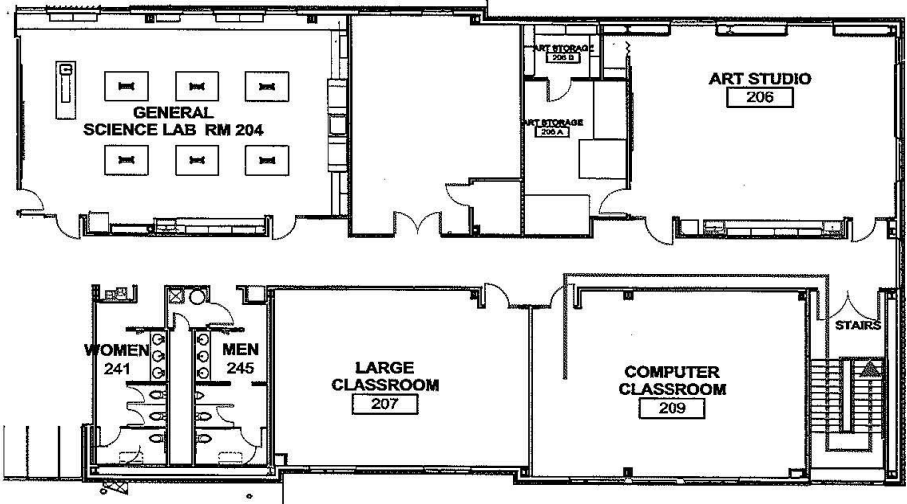
## BUILDING EVACUATION

1. Follow the evacuation route, as indicated, to closest stairwell to First Floor
2. Exit Building through double doors to AREA SOUTH PARKING LOT

## SAFE AREA EVACUATION (Tornado/Severe Weather)

ALL REST ROOMS AND STAIRWELLS ARE SAFE AREAS  
MOVE TO LOWEST POSSIBLE FLOOR LEVEL OF BUILDING

1. Proceed to Restroom 241 OR 245



North

SECOND FLOOR PLAN

### LEGEND:

- EVACUATION ROUTE
- ▨ SAFE AREA

SOUTH PARKING LOT



# GENERAL SCIENCE LAB ROOM 204

HARRISON EDUCATION CENTER

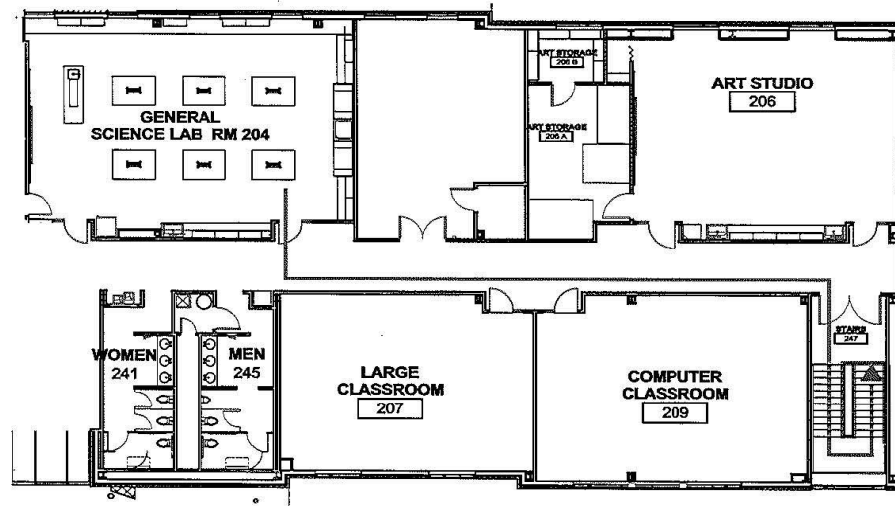
## BUILDING EVACUATION

1. Follow the evacuation route, as indicated, to closest stairwell to First Floor
2. Exit Building through double doors to AREA SOUTH PARKING LOT

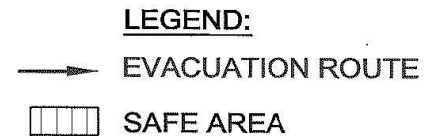
## SAFE AREA EVACUATION (Tornado/Severe Weather)

ALL REST ROOMS AND STAIRWELLS ARE SAFE AREAS  
MOVE TO LOWEST POSSIBLE FLOOR LEVEL OF BUILDING

1. Proceed to Restroom 241 OR 245



SECOND FLOOR PLAN



SOUTH PARKING LOT

# LARGE CLASSROOM ROOM 207

HARRISON EDUCATION CENTER

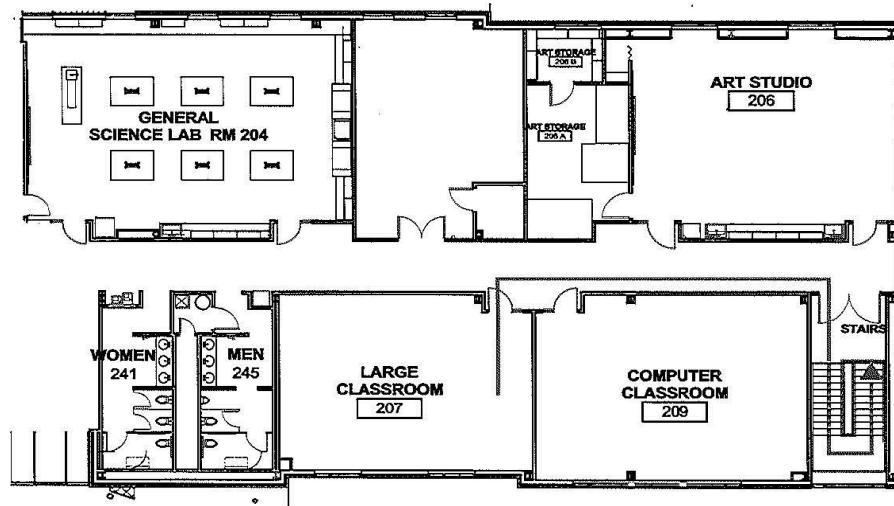
## BUILDING EVACUATION

1. Follow the evacuation route, as indicated, to closest stairwell to First Floor
2. Exit Building through double doors to AREA SOUTH PARKING LOT

## SAFE AREA EVACUATION (Tornado/Severe Weather)

ALL REST ROOMS AND STAIRWELLS ARE SAFE AREAS  
MOVE TO LOWEST POSSIBLE FLOOR LEVEL OF BUILDING

1. Proceed to Restroom 241 OR 245



SECOND FLOOR PLAN



SOUTH PARKING LOT

HARRISON EDUCATION CENTER

BUILDING EVACUATION

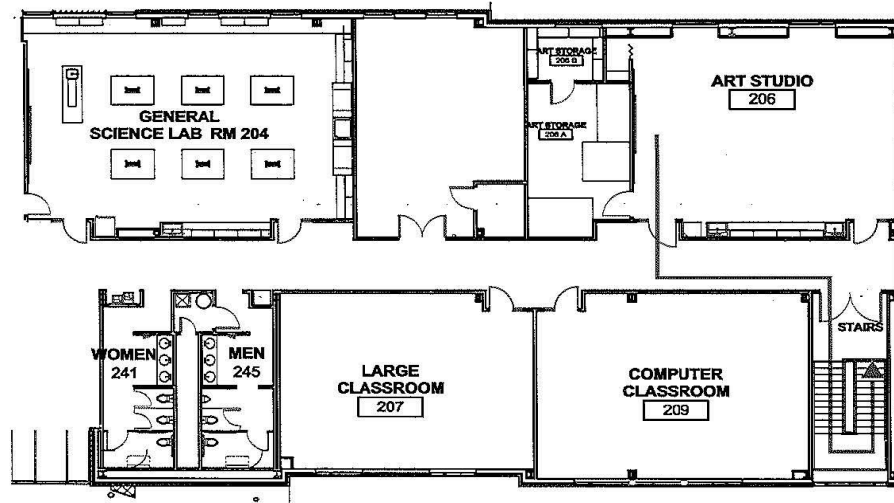
1. Follow the evacuation route, as indicated, to closest stairwell to First Floor
2. Exit Building through double doors to AREA SOUTH PARKING LOT

**ART STUDIO  
ROOM 206**

SAFE AREA EVACUATION (Tornado/Severe Weather)

ALL REST ROOMS AND STAIRWELLS ARE SAFE AREAS  
MOVE TO LOWEST POSSIBLE FLOOR LEVEL OF BUILDING

1. Proceed to Restroom 241 OR 245



North

SECOND FLOOR PLAN

LEGEND:

→ EVACUATION ROUTE

▨ SAFE AREA

SOUTH PARKING LOT

# STUDY NOOK

HARRISON EDUCATION CENTER

## BUILDING EVACUATION

1. Follow the evacuation route, as indicated, to closest stairwell to First Floor
2. Exit Building through double doors to AREA SOUTH PARKING LOT

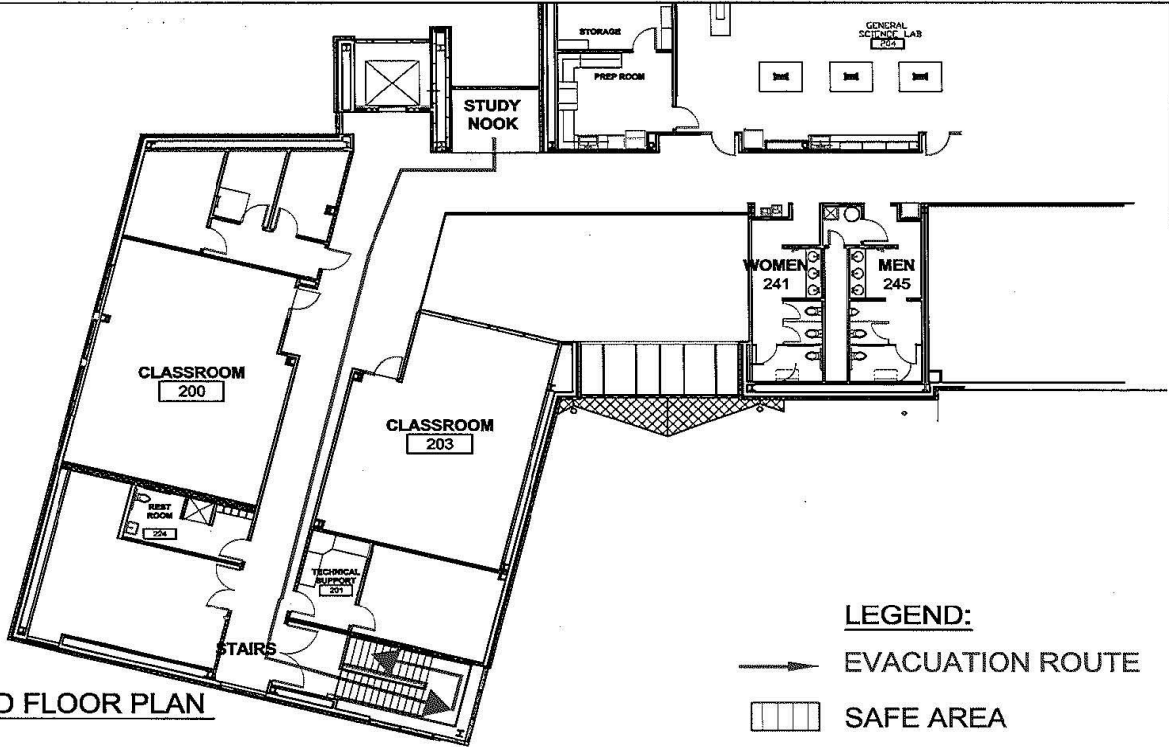
## SAFE AREA EVACUATION (Tornado/Severe Weather)

ALL REST ROOMS AND STAIRWELLS ARE SAFE AREAS  
MOVE TO LOWEST POSSIBLE FLOOR LEVEL OF BUILDING

1. Proceed to Restroom 241 OR 245



SECOND FLOOR PLAN



SOUTH PARKING LOT

# BOOKSTORE ROOM 105

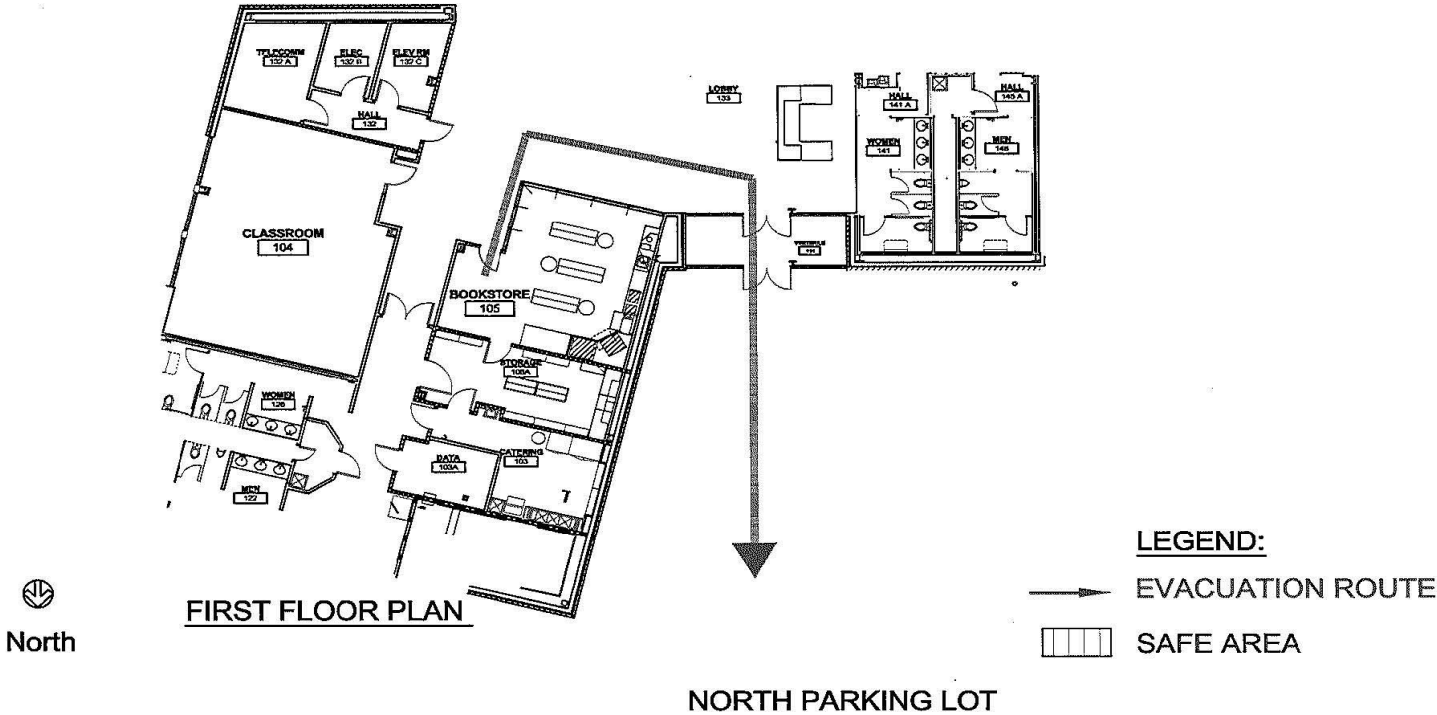
HARRISON EDUCATION CENTER

## BUILDING EVACUATION

1. Follow the evacuation route, as indicated.
2. Exit Building through double doors as shown to AREA NORTH PARKING LOT

## SAFE AREA EVACUATION (Tornado/Severe Weather)

1. Proceed to Restroom 122



# CATERING ROOM 103 BOOKSTORE STORAGE ROOM 105A

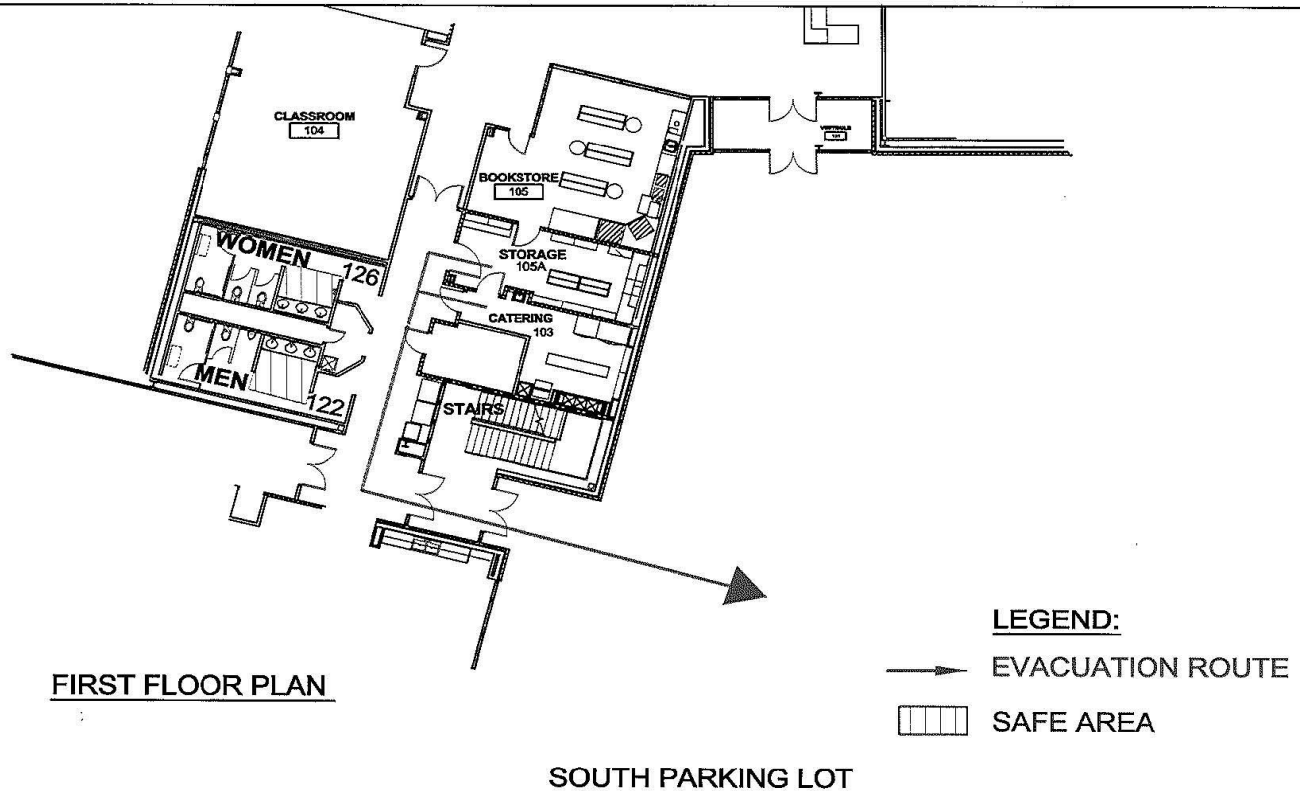
HARRISON EDUCATION CENTER

## BUILDING EVACUATION

1. Follow the evacuation route, as indicated.
2. Exit Building through double doors as shown to  
AREA SOUTH PARKING LOT

## SAFE AREA EVACUATION (Tornado/Severe Weather)

1. Proceed to Restroom 122 or 126



# CATERING AND BOOKSTORE STORAGE ROOM 103 & 105A

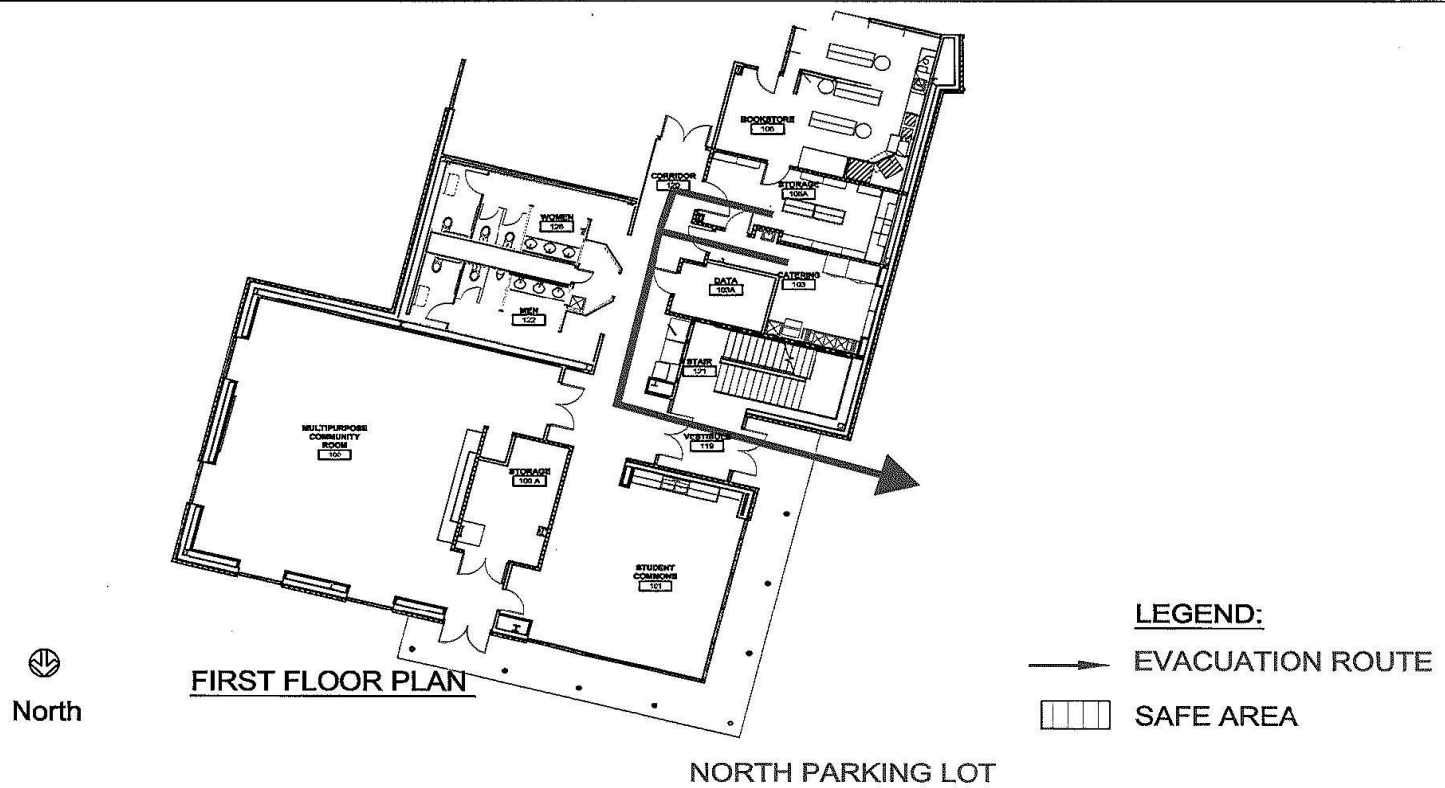
HARRISON EDUCATION CENTER

## BUILDING EVACUATION

1. Follow the evacuation route, as indicated.
2. Exit Building through double doors as shown to  
AREA NORTH PARKING LOT

## SAFE AREA EVACUATION (Tornado/Severe Weather)

1. Proceed to Restroom 122



# CLASSROOM 104

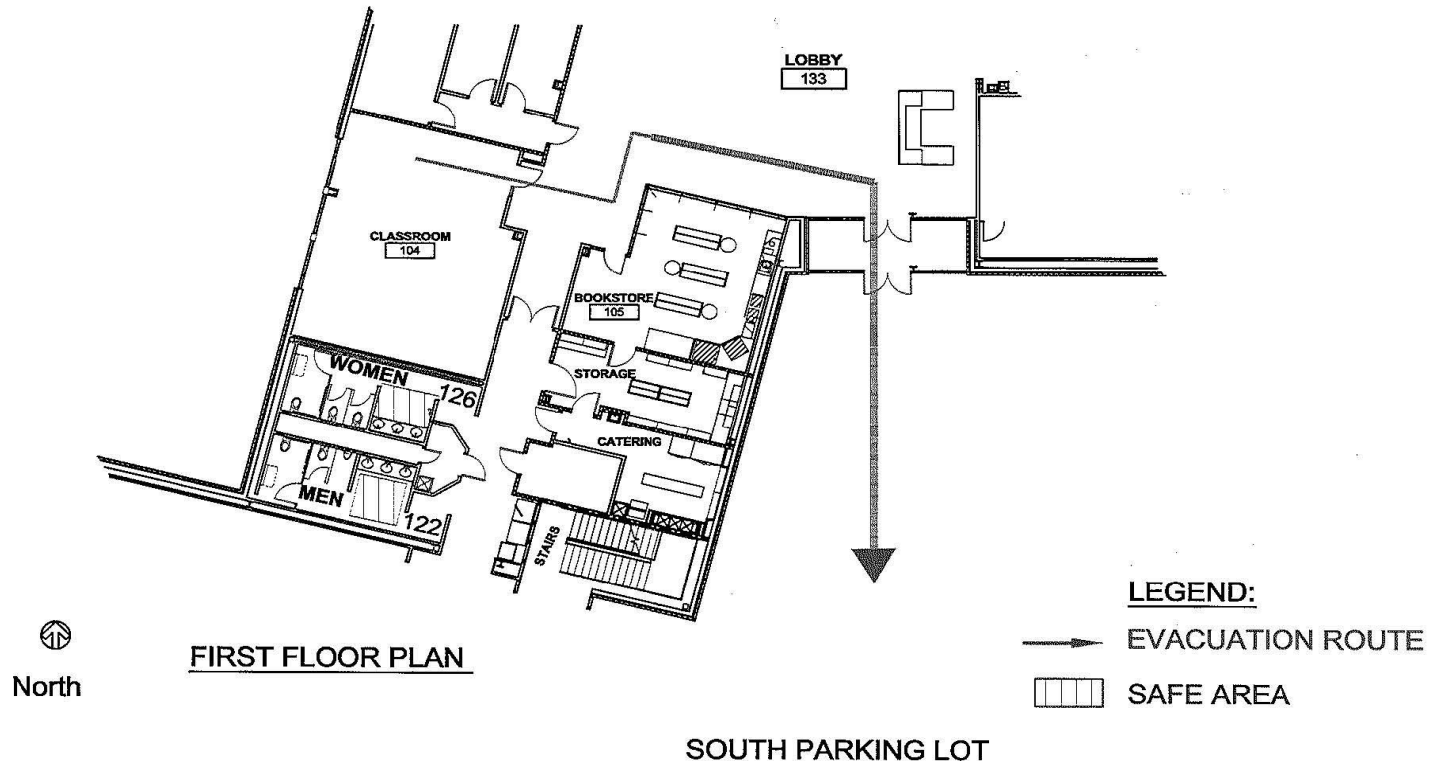
HARRISON EDUCATION CENTER

## BUILDING EVACUATION

1. Follow the evacuation route, as indicated.
2. Exit Building through double doors as shown to  
AREA SOUTH PARKING LOT

## SAFE AREA EVACUATION (Tornado/Severe Weather)

1. Proceed to Restroom 122 or 126





# CONFERENCE ROOM WORKROOM

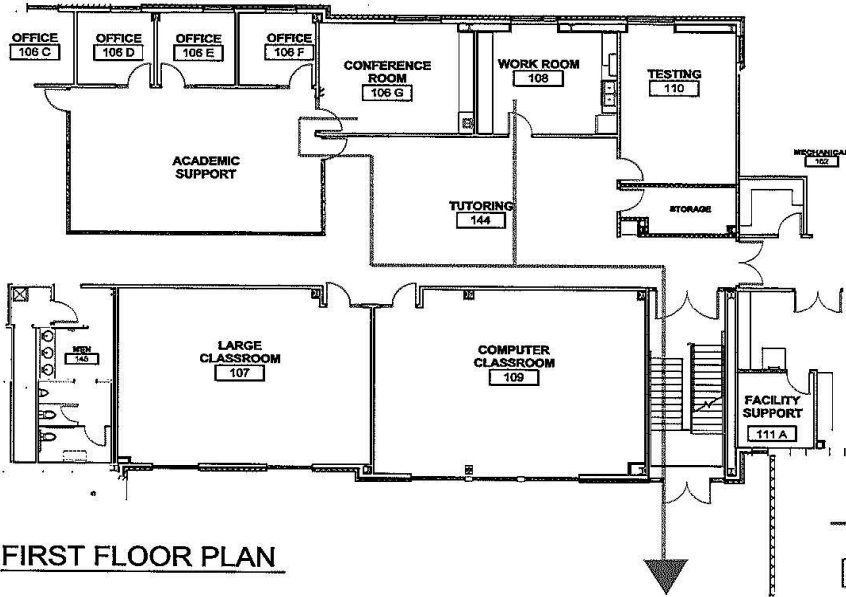
HARRISON EDUCATION CENTER

## BUILDING EVACUATION

1. Follow the evacuation route, as indicated.
2. Exit Building through double doors as shown to  
AREA NORTH PARKING LOT

## SAFE AREA EVACUATION (Tornado/Severe Weather)

1. Proceed to Restroom 141 & 145



FIRST FLOOR PLAN

North

NORTH PARKING LOT

LEGEND:  
— EVACUATION ROUTE  
▨ SAFE AREA

HARRISON EDUCATION CENTER

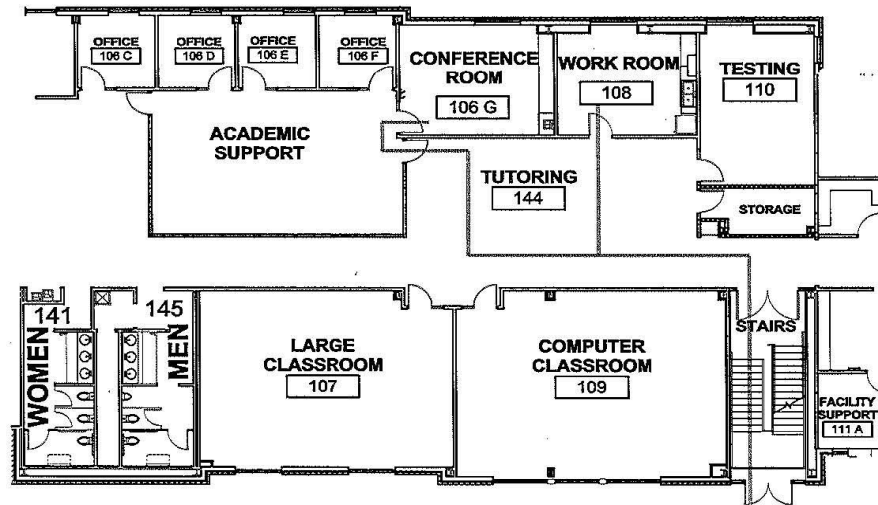
BUILDING EVACUATION

1. Follow the evacuation route, as indicated.
2. Exit Building through double doors as shown to AREA SOUTH PARKING LOT

CONFERENCE ROOM 106G  
WORKROOM 108  
TUTORING 144

SAFE AREA EVACUATION (Tornado/Severe Weather)

1. Proceed to Restroom 141 or 145



FIRST FLOOR PLAN



LEGEND:

- EVACUATION ROUTE
- ▨ SAFE AREA

SOUTH PARKING LOT

# FACILITY SUPPORT ROOM 111A

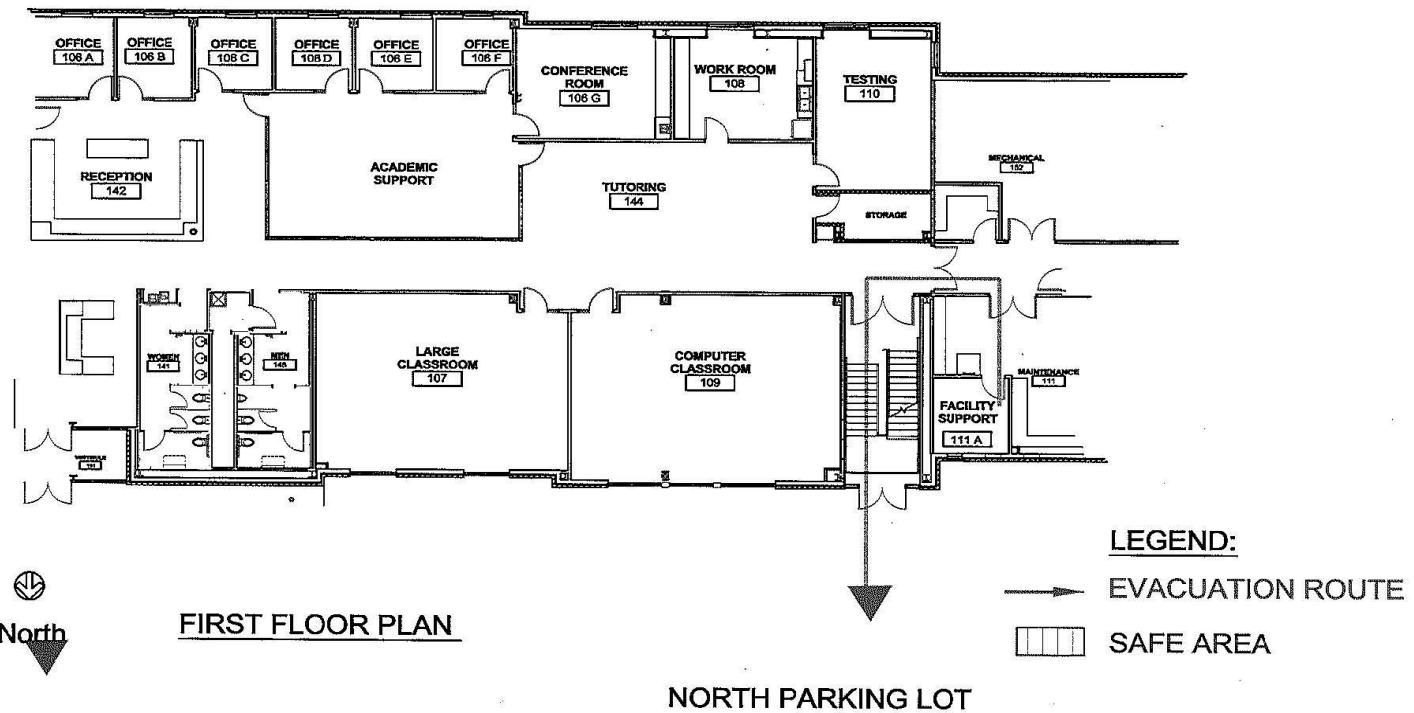
HARRISON EDUCATION CENTER

## BUILDING EVACUATION

1. Follow the evacuation route, as indicated.
2. Exit Building through double doors as shown to  
AREA NORTH PARKING LOT

## SAFE AREA EVACUATION (Tornado/Severe Weather)

1. Proceed to Restroom 141 & 145



# LARGE CLASSROOM 107 COMPUTER CLASSROOM 109

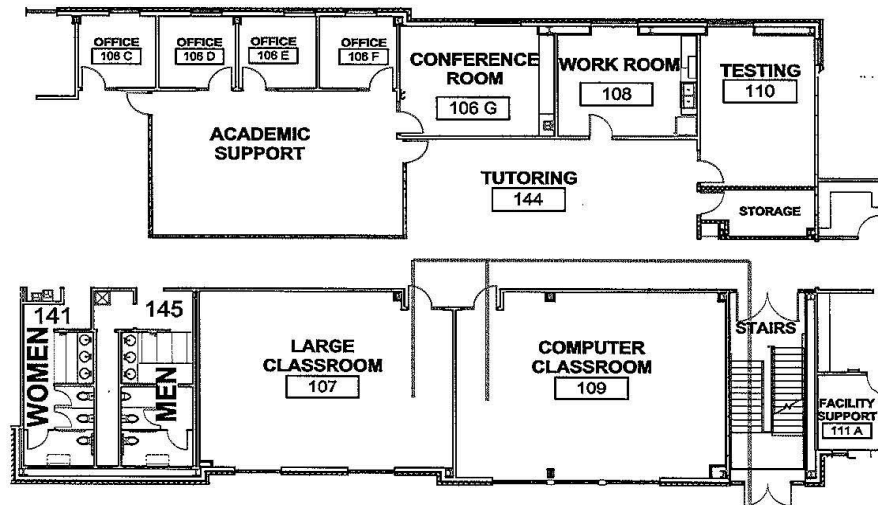
HARRISON EDUCATION CENTER

## BUILDING EVACUATION

1. Follow the evacuation route, as indicated.
2. Exit Building through double doors as shown to  
AREA SOUTH PARKING LOT

## SAFE AREA EVACUATION (Tornado/Severe Weather)

1. Proceed to Restroom 141 or 145



North

FIRST FLOOR PLAN

SOUTH PARKING LOT

### LEGEND:

- EVACUATION ROUTE
- ▨ SAFE AREA

# LARGE CALSSROOM 107 COMPUTER CLASSROOM 108

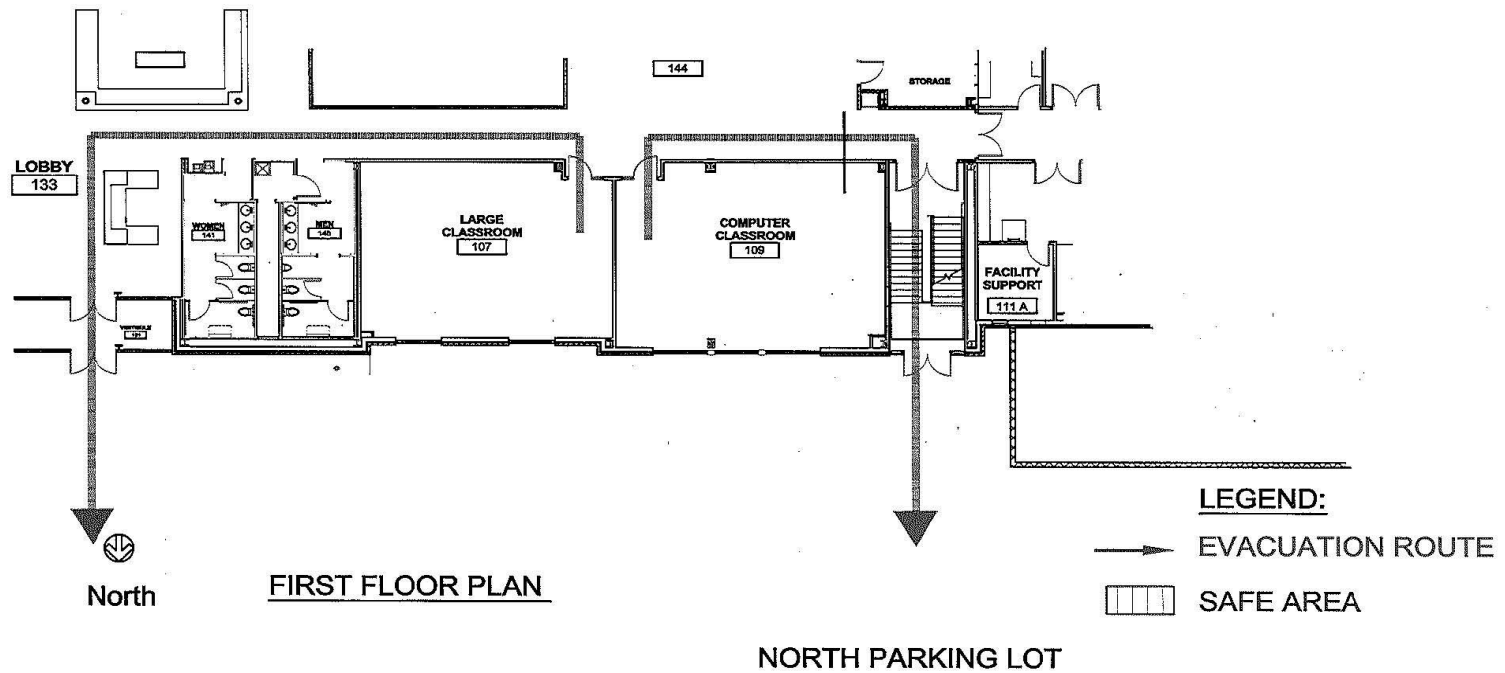
HARRISON EDUCATION CENTER

## BUILDING EVACUATION

1. Follow the evacuation route, as indicated.
2. Exit Building through double doors as shown to  
AREA NORTH PARKING LOT

## SAFE AREA EVACUATION (Tornado/Severe Weather)

1. Proceed to Restroom 141 & 145



# TESTING ROOM 110 FACILITY SUPPORT 111A

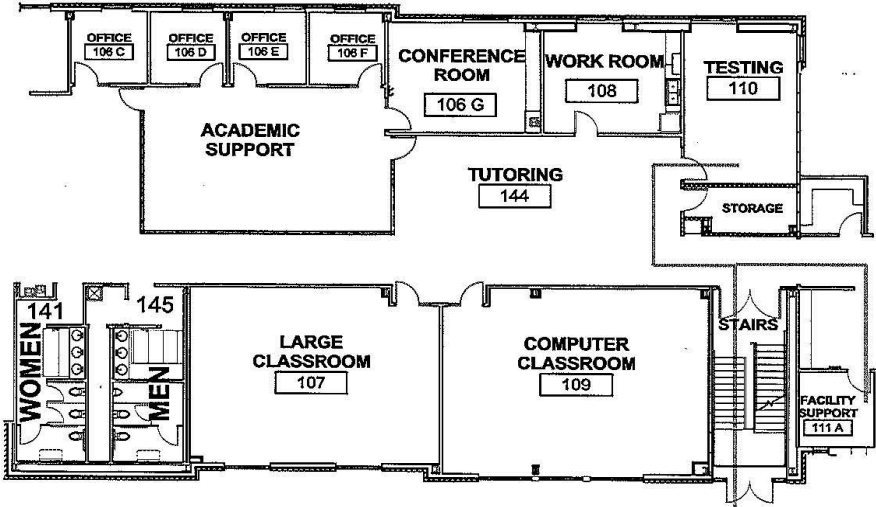
HARRISON EDUCATION CENTER

## BUILDING EVACUATION

1. Follow the evacuation route, as indicated.
2. Exit Building through double doors as shown to  
AREA SOUTH PARKING LOT

## SAFE AREA EVACUATION (Tornado/Severe Weather)

1. Proceed to Restroom 141 or 145



FIRST FLOOR PLAN



LEGEND:

- EVACUATION ROUTE
- ▤ SAFE AREA

SOUTH PARKING LOT

# MULTIPURPOSE COMMUNITY ROOM 100

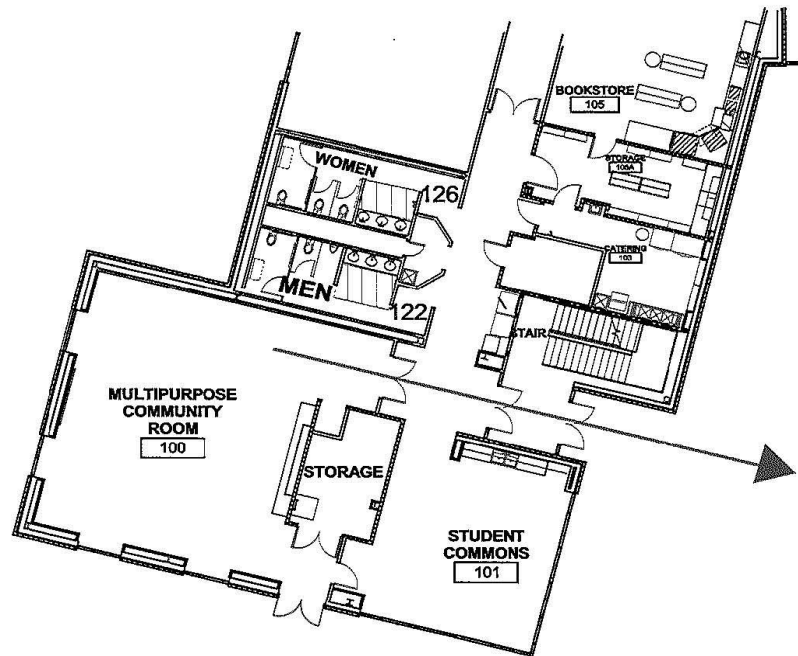
HARRISON EDUCATION CENTER

## BUILDING EVACUATION

1. Follow the evacuation route, as indicated.
2. Exit Building through double doors as shown to AREA SOUTH PARKING LOT

## SAFE AREA EVACUATION (Tornado/Severe Weather)

1. Proceed to Restroom 122 or 126



North

FIRST FLOOR PLAN

SOUTH PARKING LOT

### LEGEND:

- EVACUATION ROUTE
- SAFE AREA

# MULTI-PURPOSE COMMUNITY ROOM ROOM 100

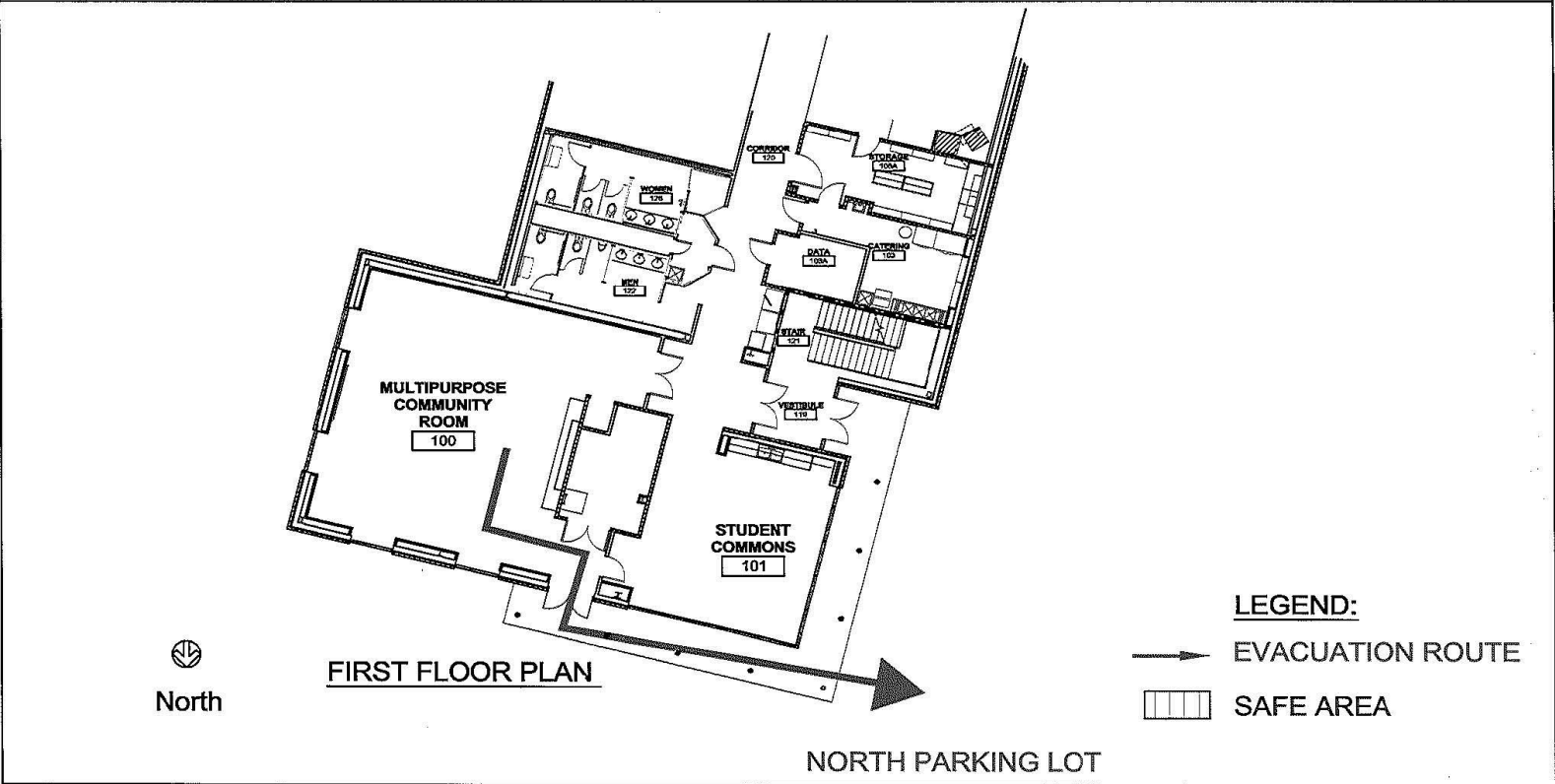
HARRISON EDUCATION CENTER

## BUILDING EVACUATION

1. Follow the evacuation route, as indicated.
2. Exit Building through double doors as shown to  
AREA NORTH PARKING LOT

## SAFE AREA EVACUATION (Tornado/Severe Weather)

1. Proceed to Restroom 122





# OFFICES 100A, 100B, & 100C

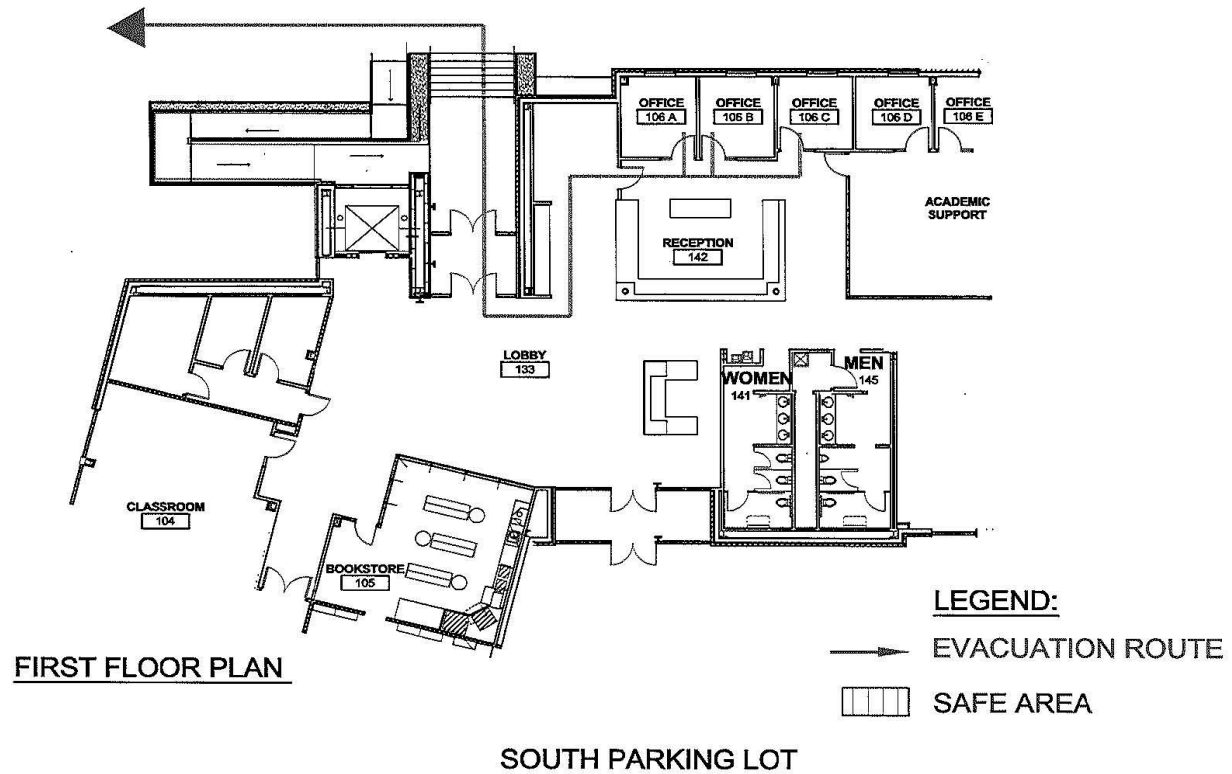
HARRISON EDUCATION CENTER

## BUILDING EVACUATION

1. Follow the evacuation route, as indicated.
2. Exit Building through double doors as shown to Corner of Case Avenue and Francis Street

## SAFE AREA EVACUATION (Tornado/Severe Weather)

1. Proceed to Restroom 141 or 145



HARRISON EDUCATION CENTER

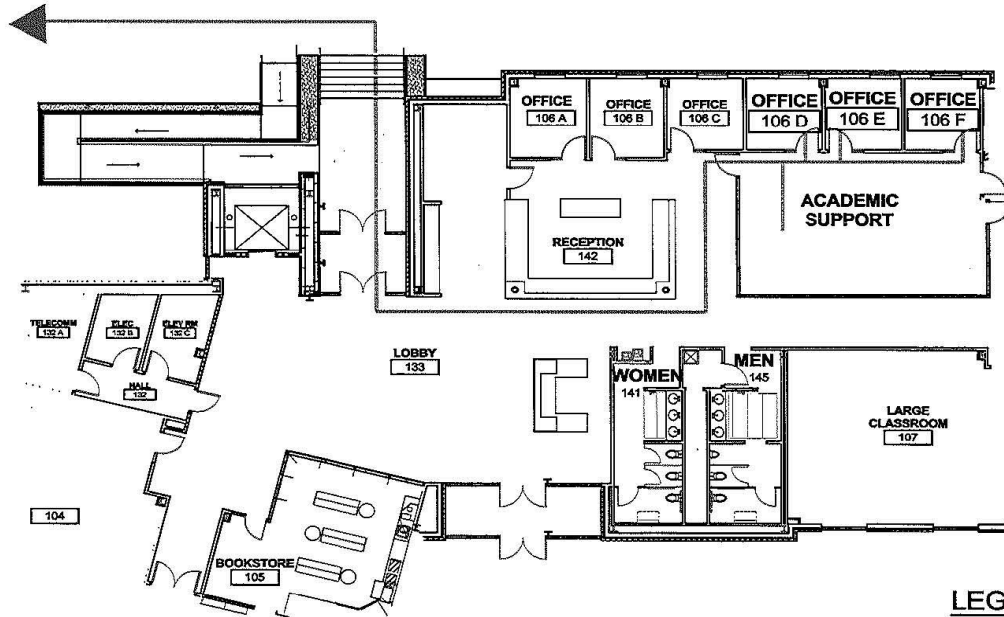
BUILDING EVACUATION

1. Follow the evacuation route, as indicated.
2. Exit Building through double doors as shown to  
Corner of Case Avenue and Francis Street

OFFICES 106D, 106E, & 106F  
ACADEMIC SUPPORT 144

SAFE AREA EVACUATION (Tornado/Severe Weather)

1. Proceed to Restroom 141 or 145



FIRST FLOOR PLAN



LEGEND:

- EVACUATION ROUTE
- ▤ SAFE AREA

SOUTH PARKING LOT

# OFFICES 106A, 106B, & 106C

HARRISON EDUCATION CENTER

## BUILDING EVACUATION

1. Follow the evacuation route, as indicated.
2. Exit Building through double doors as shown to Corner of Case Avenue and Francis Street

## SAFE AREA EVACUATION (Tornado/Severe Weather)

1. Proceed to Restroom 141 or 145

