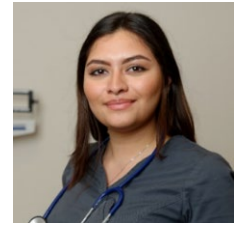


Medical Assistant Training

June 2024 with SSM Health

Ready to start your career in healthcare? St. Louis Community College and SSM Health are seeking qualified individuals to work as Medical Assistants while completing a 29-week full-time program to earn the Certified Clinical Medical Assistant (CCMA) credential. This accelerated workforce training program combines classroom instruction, hands-on skills labs and on-the-job training in a clinical practice



Program Highlights

- Individuals selected for the program will be employed as Medical Assistants by SSM Health during training.
- Starting salary wage up to \$18.00/per hour. *Benefit eligible.*
- Tuition funding is provided by SSM Health. Minimum 2-year employment commitment required upon completion.
- What you will learn ...
 - Health care systems and settings
 - Medical law and ethics
 - Administrative assisting
 - Communication and customer service
 - Patient care coordination and education
 - Medical terminology
 - Body structures and organ systems
 - General patient care
 - Testing and laboratory procedures
 - Pathophysiology and disease processes
 - Infection control
 - Phlebotomy and basic pharmacology
 - EKG and cardiovascular testing

Training Schedule

June 3, 2024– December 19, 2024

Training Hours | Monday-Friday between 8 a.m.-5 p.m.

Classroom/Lab Instruction

STLCC Forest Park, Center for Nursing & Health Sciences

- **Classroom:** 2-3 days biweekly from 8 a.m.-1 p.m.
- **Skill labs:** Biweekly Wednesday/Thursday 8 a.m.-4:30 p.m.
- **Online Coursework:** 3 hours daily

Clinical Practice

Assigned SSM Health location – more than 37 locations throughout the region

- 2-3 days weekly from 8 a.m.-5 p.m. as assigned. Exact start times may vary by office.

How to Get Started

1. Apply online at stlcc.edu/MA and watch your email for instructions.
2. Complete the online presentation and follow the instructions provided.
3. Contact the STLCC MA office when you have finished all steps and are ready to begin the intake process.
4. Staff will email you instructions to complete remaining steps.



Current Eligibility

Enrollment for the MA program is selective. Applicants must meet all eligibility requirements to be selected.

Before you apply you must:

- Be 18+ years old
- Have a high school diploma or equivalent

After you apply you will be required to:

- Register with the Missouri Family Care Safety Registry
- Meet required benchmarks on healthcare fit and workplace readiness assessments
- Demonstrate academic and career readiness
- Complete interviews with STLCC and SSM Health staff
- Pass a criminal background check, drug screen panel, and physical exam with proof of immunizations or titers.

SSM Health Advantages - SSM Health is one of the largest Catholic health systems in the country and is dedicated to quality and compassionate care for anyone in need, regardless of ability to pay. SSM Health values their exceptional employees and is committed to helping them lead a healthy lifestyle by offering a comprehensive benefits package to fit their needs – including those that promote physical, financial, and emotional well-being. Learn more about working at [SSM Health](https://www.ssmhealth.com).

Non-Discrimination Statement: St. Louis Community College is committed to creating inclusive, welcoming, and respectful learning and working environments focused on the needs of our diverse communities. The College does not discriminate on the basis of race, color, national origin, ancestry, religion, sex, pregnancy, sexual orientation, gender identity, gender expression, age, disability, protected veteran status, and any other status protected by applicable state or federal law. The College's nondiscrimination policies apply to any phase of its employment process, any phase of its admission, or financial aid programs, and all of its educational programs or activities. For information or concerns related to discrimination or sexual harassment, contact [Shannon Nicholson, MS, LPC](mailto:Shannon.Nicholson@stlcc.edu), Director of Community Standards/Title IX Coordinator, at 314-539-5345