

Key Performance Area: Graduates

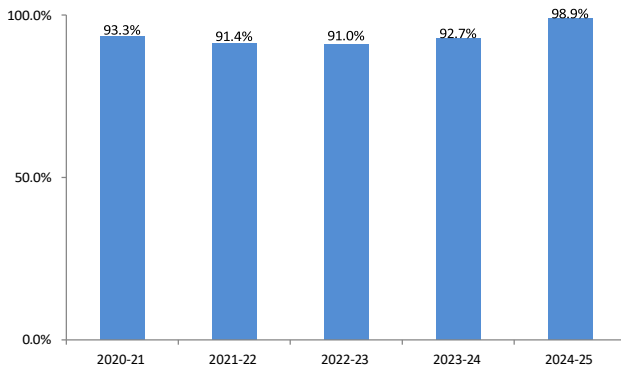
KPI: Number of Associate's Degrees Awarded

Degree Type	2020-21 N	2020-21 %	2021-22 N	2021-22 %	2022-23 N	2022-23 %	2023-24 N	2023-24 %	2024-25 N	2024-25 %
Associate in Arts	1,218	58%	1,181	60%	1,064	56%	1,024	56%	1,072	52%
Associate in Applied Science	730	35%	655	33%	691	36%	657	36%	736	36%
Associate of Arts in Teaching	59	3%	47	2%	32	2%	22	1%	58	3%
Associate in Fine Arts	34	2%	34	2%	34	2%	45	2%	48	2%
Associate in Science	62	3%	66	3%	81	4%	90	5%	131	6%
Total	2,103		1,983		1,902		1,838		2,045	

KPI: Number of Certificates Awarded

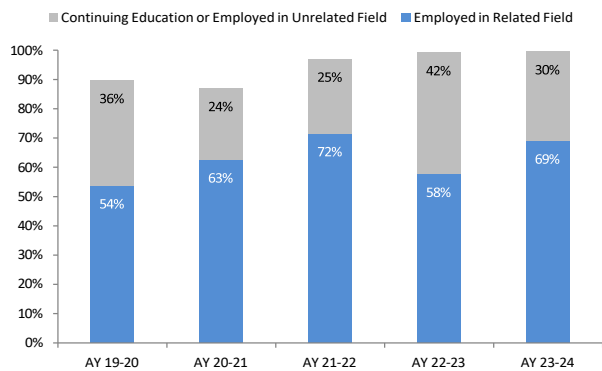
Certificate Type	2020-21 N	2020-21 %	2021-22 N	2021-22 %	2022-23 N	2022-23 %	2023-24 N	2023-24 %	2024-25 N	2024-25 %
Proficiency	193	49%	208	52%	135	45%	203	50%	203	47%
Specialization	201	51%	193	48%	167	55%	203	50%	228	53%
Total	394		401		302		406		431	

KPI: Licensure Exam Pass Rates



STLCC graduates' pass rates on the licensure exams for selected programs as reported to the Missouri Dept. of Higher Education (MDHE).

KPI: Employment Rates of CTE Graduates (CTE degrees/cert: AAS, CP, CS)



Data collected through a survey of graduates 180 days after graduation.

Percentage of CTE graduates employed in a related field and continuing education or employed in unrelated field, of those contacted with known status and available for work.

Graduate Status	AY 19-20	AY 20-21	AY 21-22	AY 22-23	AY 23-24
Employed in Related Field	337	352	375	360	365
Employed in Unrelated Field	74	96	44	157	56
Continuing Education in Related Field	33	38	82	75	99
Continuing Education in Unrelated Field	8	1	7	6	4
Continuing Education - Unknown Field	111	2	0	21	2
Unemployed	64	74	16	5	2
Not Available for Employment	2	0	6	2	3
In Military	1	0	0	0	1
Unknown Status	304	352	342	231	365
Total	934	915	872	857	897

Frequencies for all status categories on the graduate follow-up survey (CTE degrees/cert: AAS, CP, CS).