



# Emergency Evacuation Procedure Maps

**for:**

Saint Louis Community College  
Forest Park

5600 Oakland Ave, St. Louis, MO 63110

## **Evacuation Procedure Maps Contact(s):**

President: Julie Fickas

314-644-9274

Sr. Facility Manager: Dennis Dill

314-984-7740

Police Lt.: Adis Becirovic

314-984-7808

Police Lt.: David Berryman

314-644-9595

EHS Specialist:

## **Revised Date:**

12/1/2021

# Table of Contents

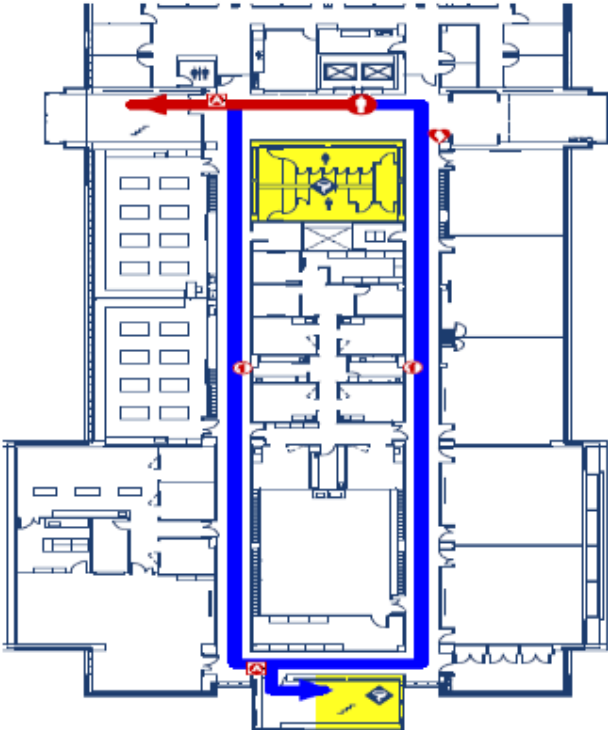
|  |          |
|--|----------|
| Emergency Evacuation Procedure Maps .....                          | i        |
| <b>Severe Weather and Evacuation Plan .....</b>                    | <b>4</b> |
| Center for Nursing and Health Sciences 1 <sup>st</sup> Floor ..... | 4        |
| Center for Nursing and Health Sciences 2 <sup>nd</sup> Floor ..... | 5        |
| Center for Nursing and Health Sciences 3 <sup>rd</sup> Floor ..... | 6        |
| Center for Nursing and Health Sciences 4 <sup>th</sup> Floor ..... | 7        |
| Severe Weather and Evacuation Plan East Wing:.....                 | 8        |
| Tower C – Lower Level .....  | 8        |
| Tower C – 1 <sup>st</sup> Floor .....                              | 9        |
| Tower C – 2 <sup>nd</sup> Floor .....                              | 10       |
| Tower C – 3 <sup>rd</sup> Floor .....                              | 11       |
| Tower C – 4 <sup>th</sup> Floor .....                              | 12       |
| Library – Lower Level .....  | 13       |
| Library .....  | 14       |
| Tower D – M Level .....  | 15       |
| Tower D – Lower Level.....   | 16       |
| Tower D – 1 <sup>st</sup> Floor .....                              | 17       |
| Tower D – 2 <sup>nd</sup> Floor .....                              | 18       |
| Tower D – 3 <sup>rd</sup> Floor .....                              | 19       |
| Tower D – 4 <sup>th</sup> Floor .....                              | 20       |
| Severe Weather and Evacuation Plan West Wing: .....                | 21       |
| Tower E – Lower Level .....  | 21       |
| Tower E – 1 <sup>st</sup> Level .....                              | 22       |
| Tower E – 2 <sup>nd</sup> Level.....                               | 23       |
| Tower E – 3 <sup>rd</sup> Level .....                              | 24       |
| Tower E – 4 <sup>th</sup> Level .....                              | 25       |
| Tower F – Lower Level .....  | 26       |
| Tower F – 1 <sup>st</sup> Floor.....                               | 27       |
| Tower F – 2 <sup>nd</sup> Floor.....                               | 28       |
| Tower F – 3rd Floor .....  | 29       |
| Tower F – 4th Floor .....  | 30       |

|  |    |
|--|----|
| Tower G – Lower Level.....                         | 31 |
| Tower G – 1 <sup>st</sup> Floor.....               | 32 |
| Tower G – 2 <sup>nd</sup> Floor.....               | 33 |
| Tower G – 3 <sup>rd</sup> Floor.....               | 34 |
| Tower G – 4 <sup>th</sup> Floor.....               | 35 |
| Severe Weather and Evacuation Plan:.....           | 36 |
| Hospitality Studies – 1 <sup>st</sup> Floor.....   | 36 |
| Hospitality Studies – 2 <sup>nd</sup> Floor.....   | 37 |
| Athletic Building – Basement/Pool.....             | 38 |
| Athletic Building – Entry Level.....               | 39 |
| Athletic Building – Gym 2 <sup>nd</sup> Floor..... | 40 |
| Theater –1 <sup>st</sup> Floor.....                | 41 |
| Theater – 2 <sup>nd</sup> Floor.....               | 42 |
| Theater – Balcony Level.....                       | 43 |














# Center for Nursing and Health Sciences 2<sup>nd</sup> Floor

## EMERGENCY EXIT PLAN



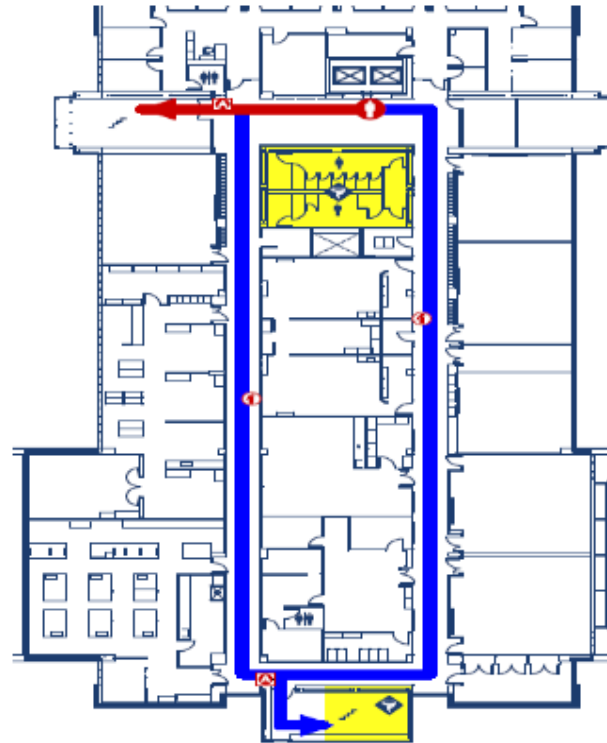
5500 Oakland Avenue. St. Louis, MO 63110

2nd Floor

- |  |   |   |
|--|---|---|
|  YOU ARE HERE                             |  ELEVATOR          |  PRIMARY ROUTE   |
|  RESTROOM                                 |  FIRE ALARM        |  SECONDARY ROUTE |
|  STAIRWELL                                |  FIRE EXTINGUISHER |  SHELTER AREA    |
|  EMERGENCY ASSEMBLY POINT: SOFTBALL FIELD |   |  AED             |

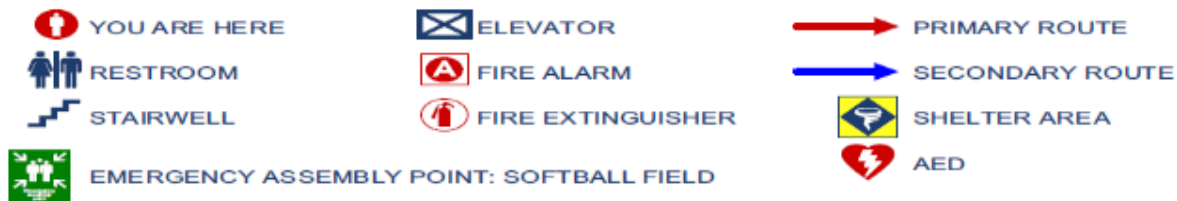
# Center for Nursing and Health Sciences 3<sup>rd</sup> Floor

## EMERGENCY EXIT PLAN



5500 Oakland Avenue. St. Louis, MO 63110

3rd Floor

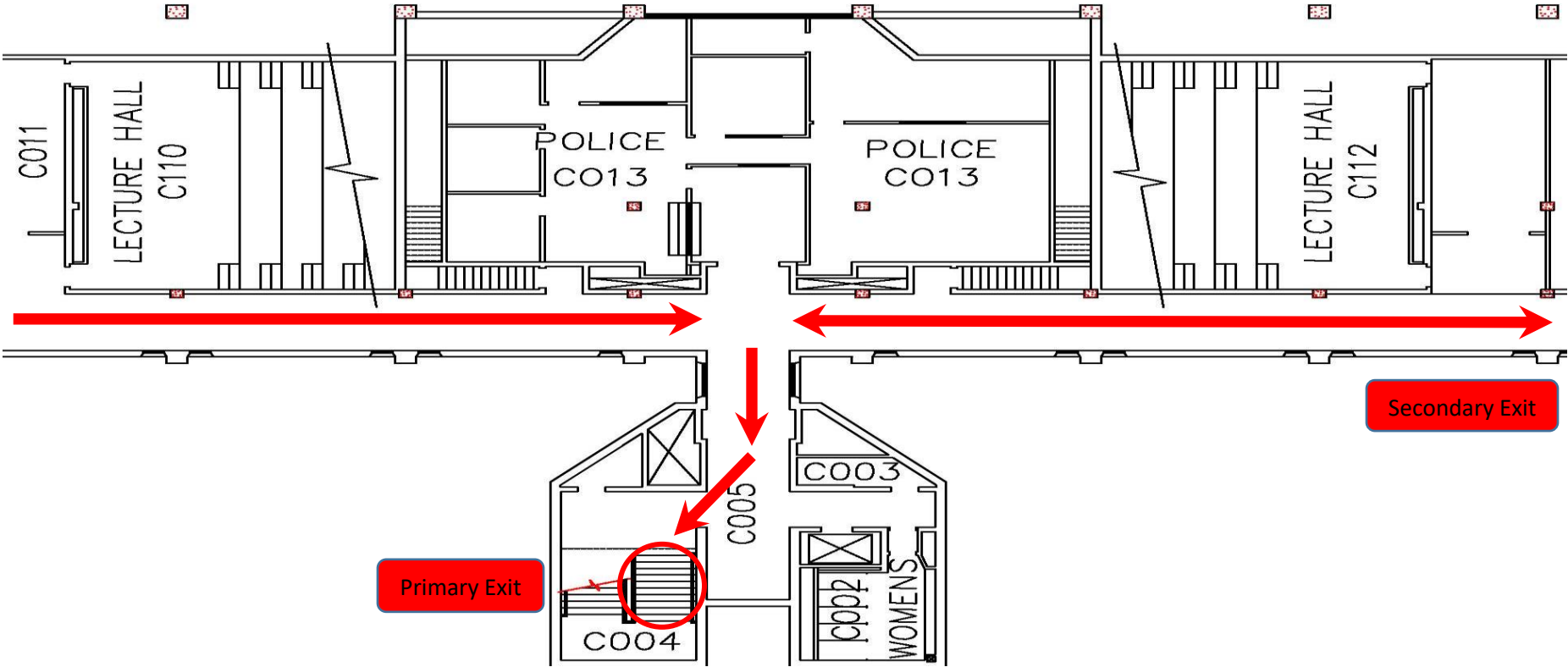




# Severe Weather and Evacuation Plan East Wing: Tower C – Lower Level

**Procedure:** Evacuate down the stairs then out the doors. **Emergency Assembly Point (EAPs):** C & D parking lot.

**Safe Area:** Stay in the basement away from windows.

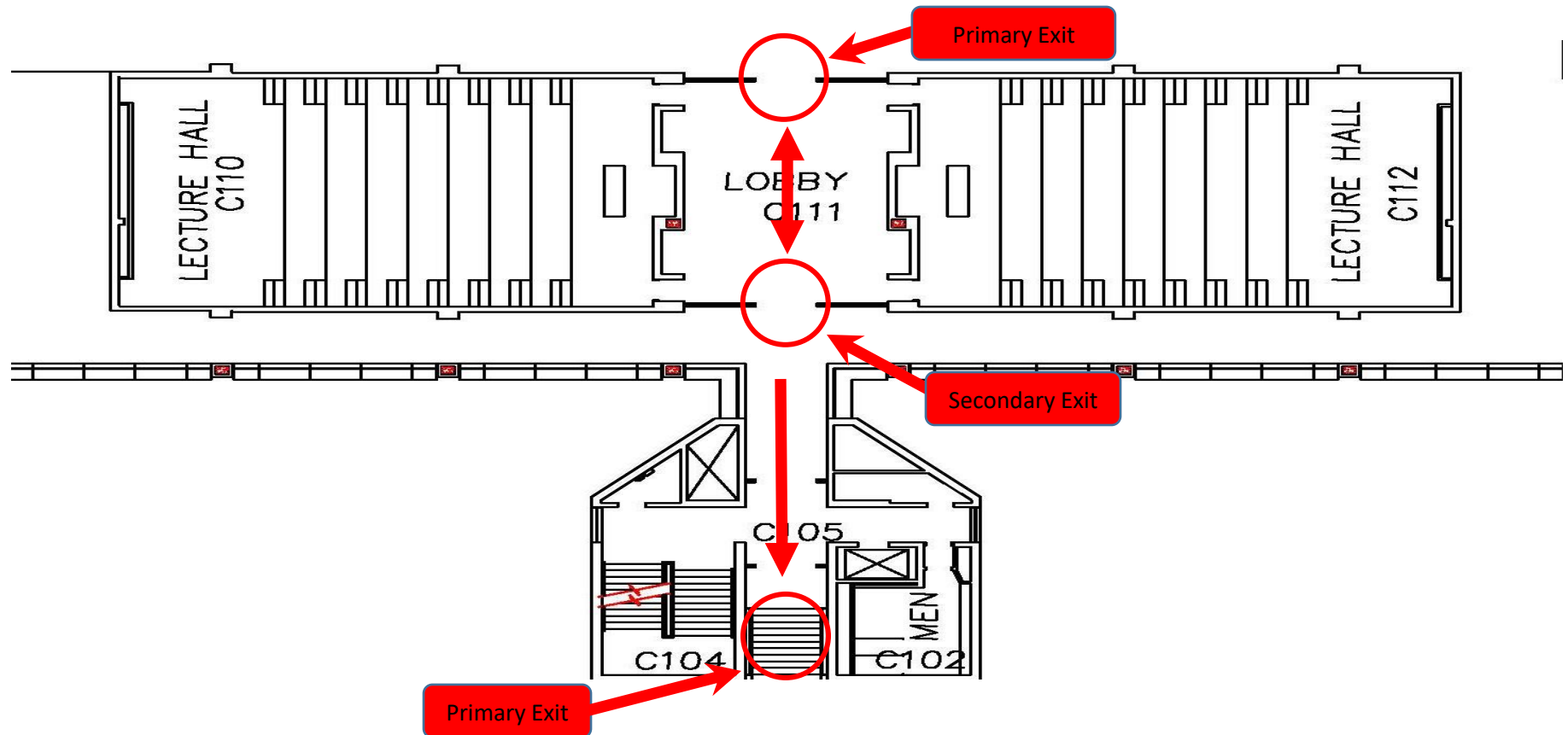




## Tower C – 1<sup>st</sup> Floor

**Procedure:** Evacuate out the doors. **Emergency Assembly Point (EAPs):** C & D parking lot.

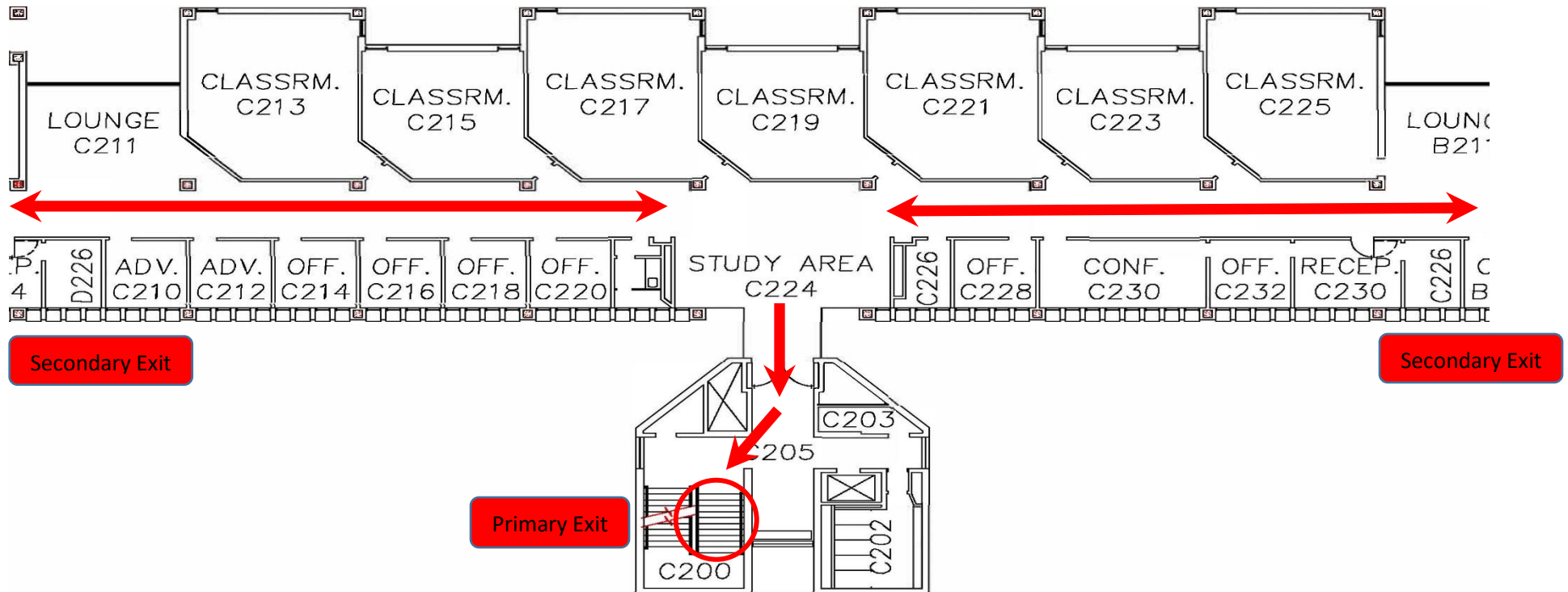
**Safe Area:** Move as far down the stairway as possible or move to the restrooms.



## Tower C – 2<sup>nd</sup> Floor

**Procedure:** Evacuate down the stairs then out the doors. **Emergency Assembly Point (EAPs):** C & D parking lot.

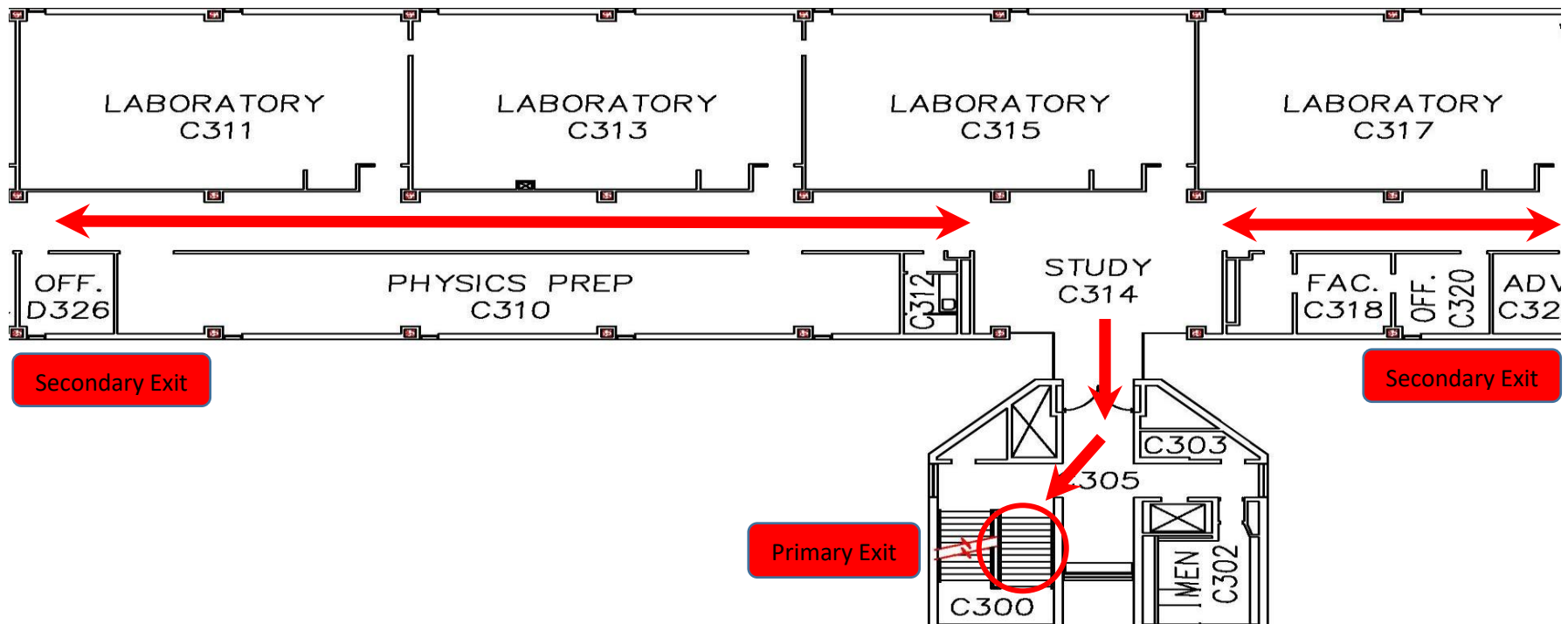
**Safe Area:** Move as far down the stairway as possible or move to the restrooms.



## Tower C – 3<sup>rd</sup> Floor

**Procedure:** Evacuate down the stairs then out the doors. **Emergency Assembly Point (EAPs):** C & D parking lot.

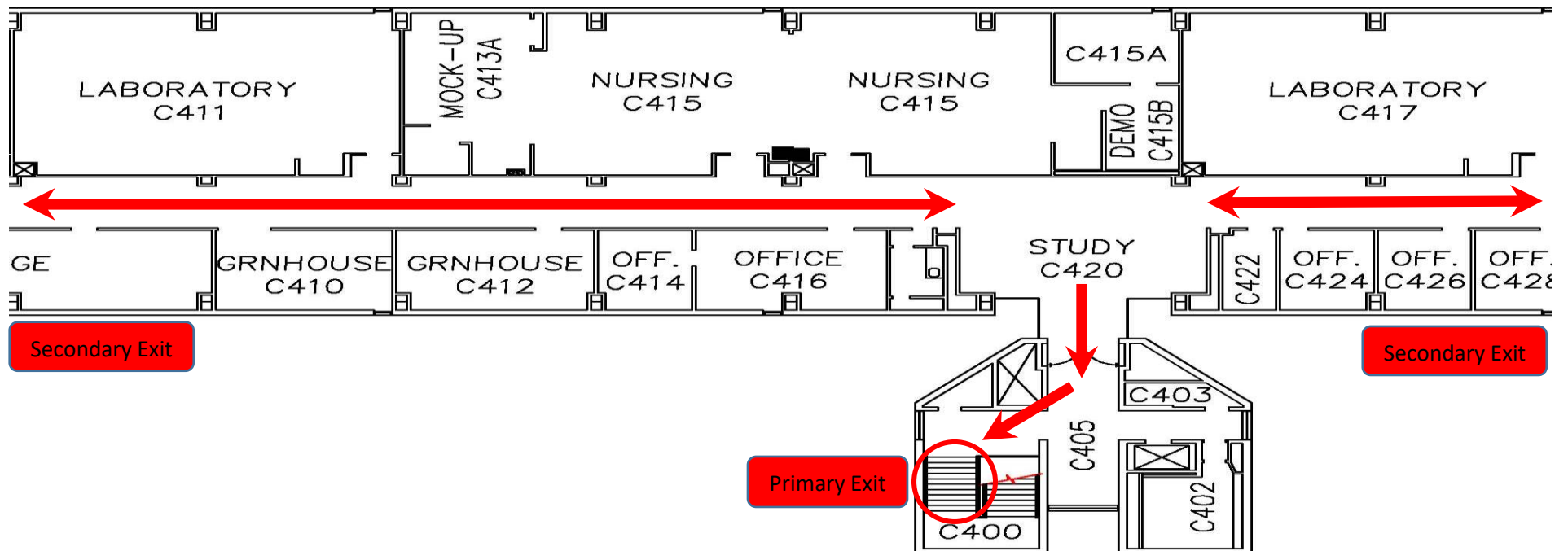
**Safe Area:** Move as far down the stairway as possible or move to the restrooms.



## Tower C – 4<sup>th</sup> Floor

**Procedure:** Evacuate down the stairs and then out the doors. **Emergency Assembly Point (EAPs):** C & D parking lot.

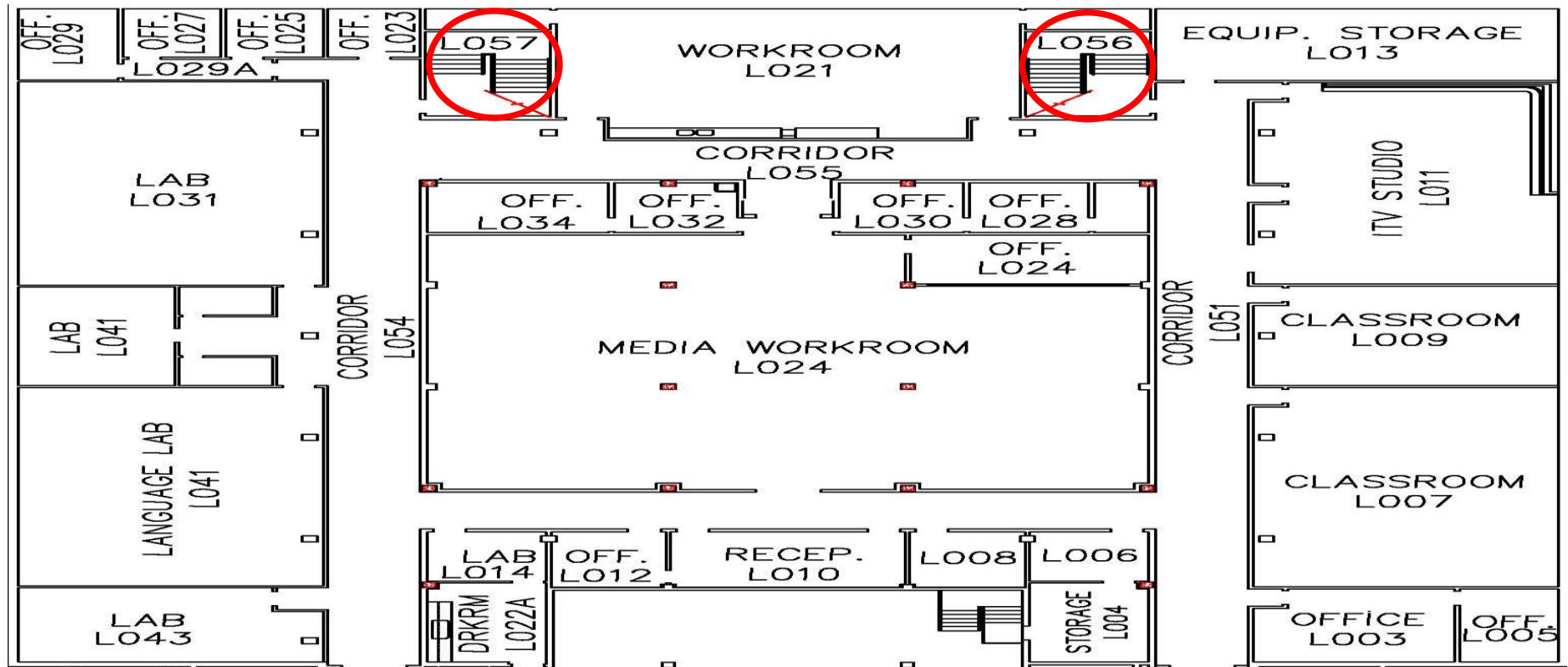
**Safe Area:** Move as far down the stairway as possible.



## Library – Lower Level

**Procedure:** Evacuate up the stairs to the exit. **Emergency Assembly Point (EAPs):** C & D parking lot.

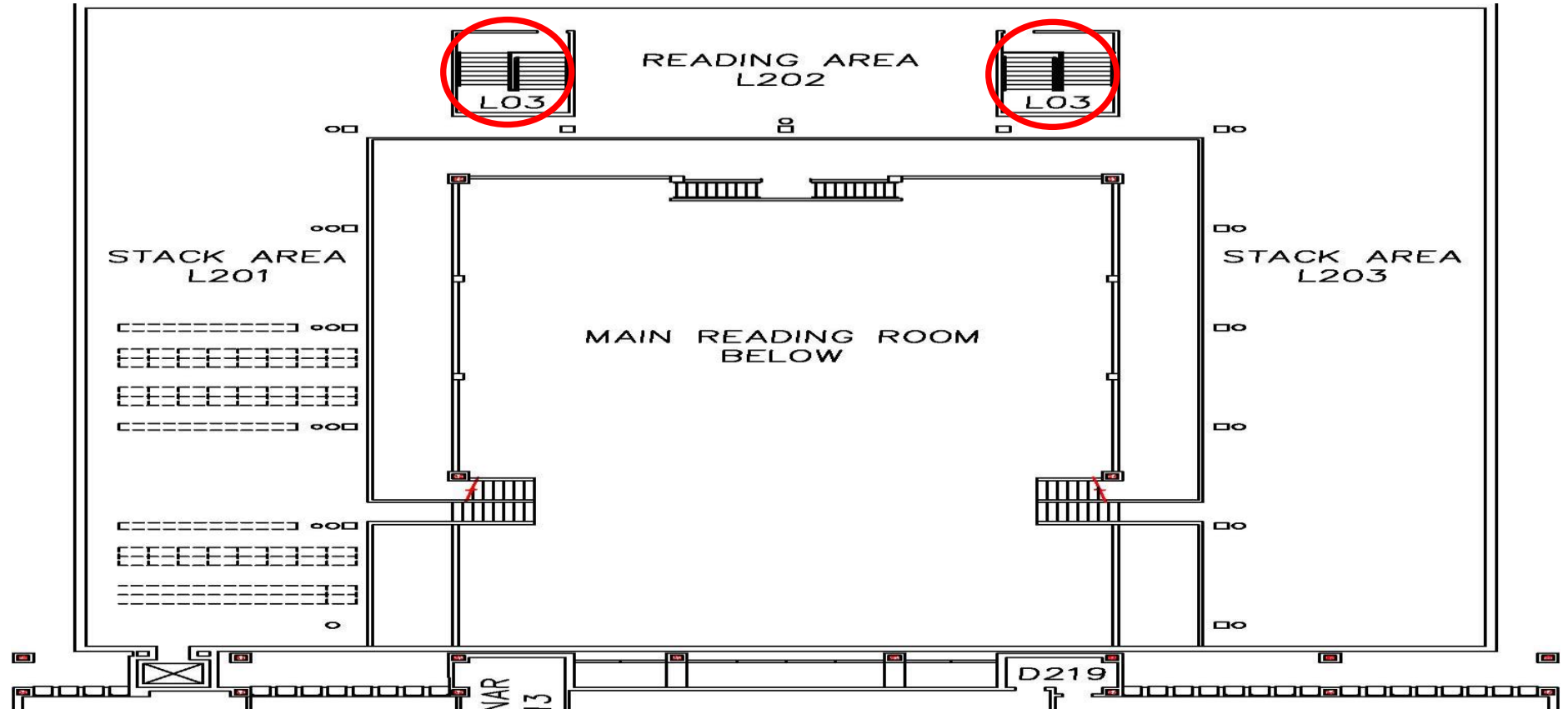
**Safe Area:** Stay in the basement away from windows.



# Library

**Procedure:** Evacuate up the stairs to the exit. **Emergency Assembly Point (EAPs):** C & D parking lot.

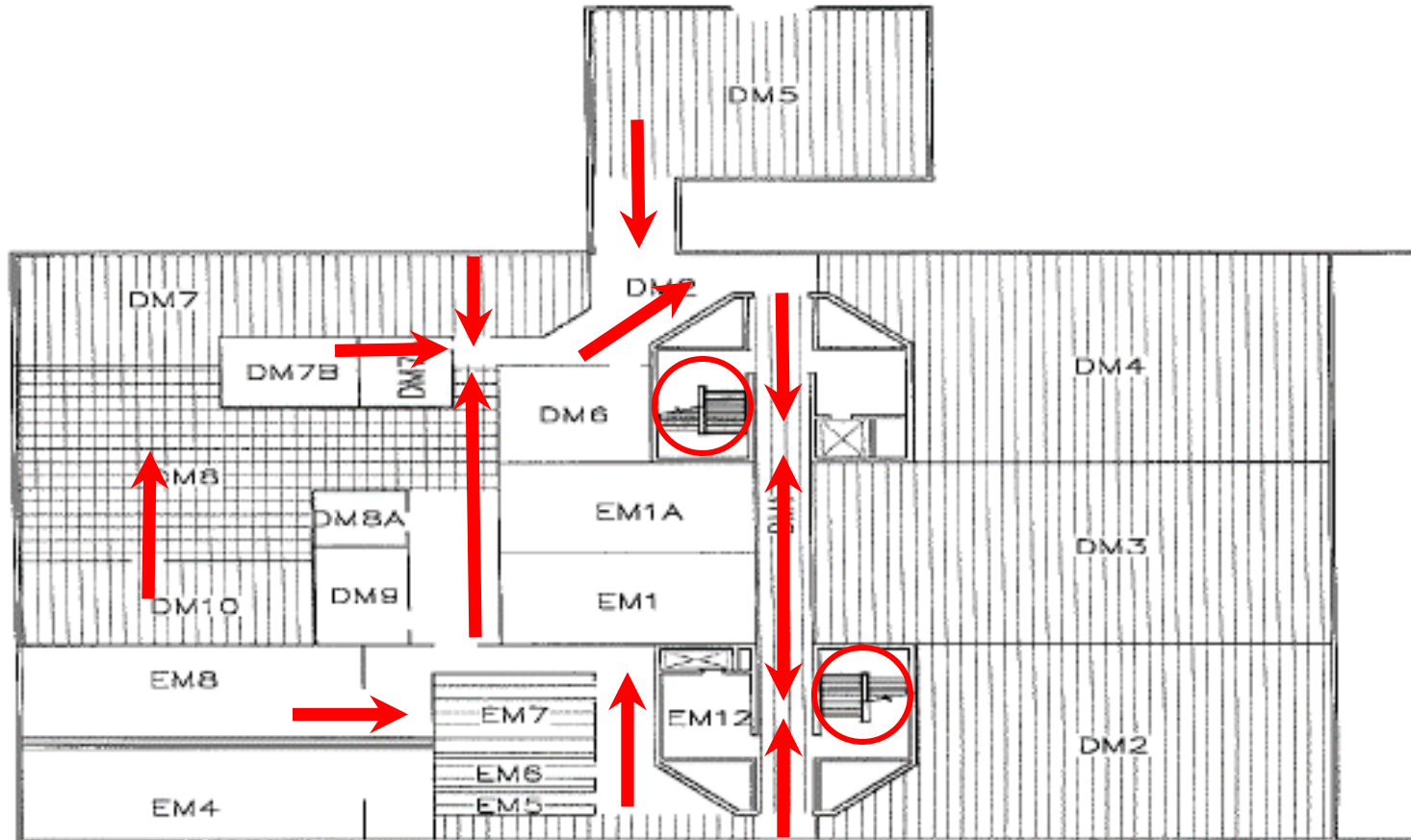
**Safe Area:** Stay in the basement away from windows.



## Tower D – M Level

**Procedure:** Evacuate up the stairs then out the doors. **Emergency Assembly Point (EAPs):** C & D parking lot.

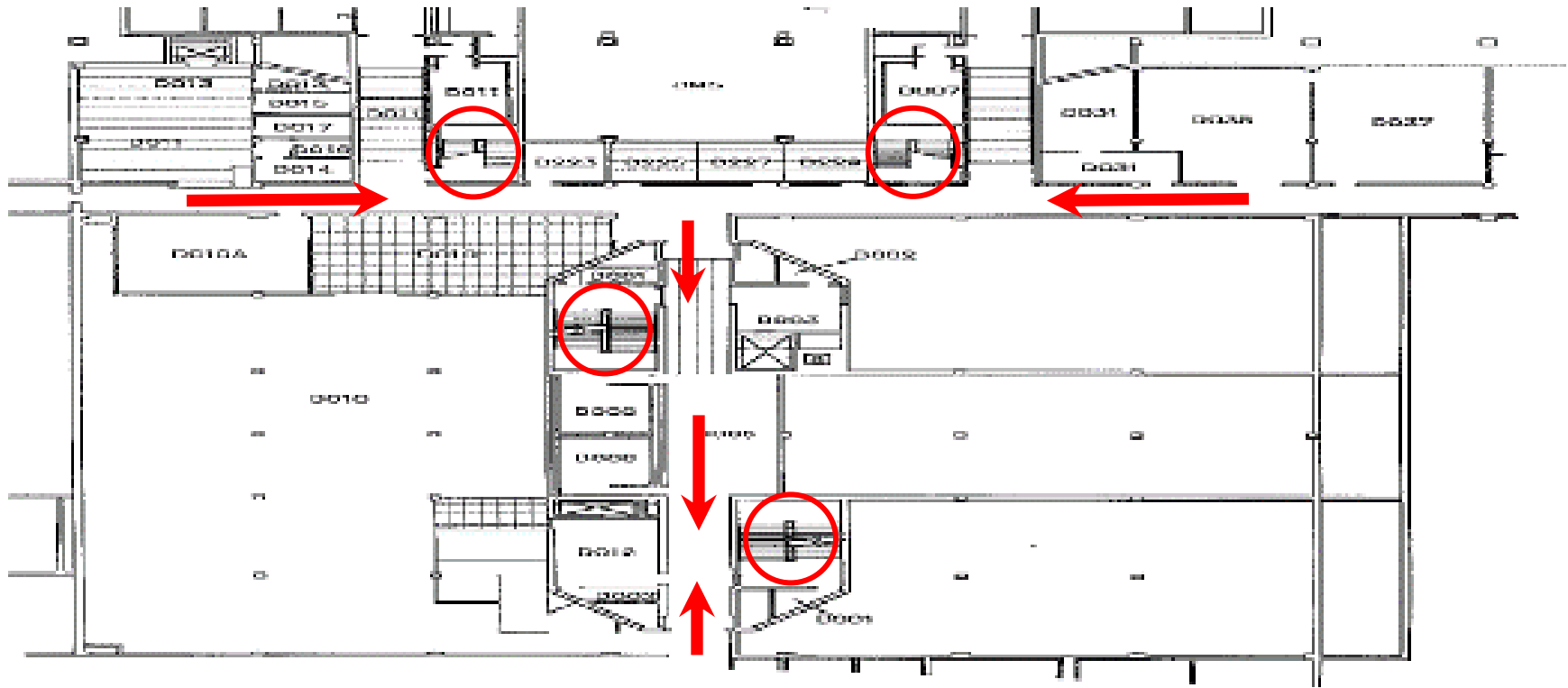
**Safe Area:** Shelter on M level.



## Tower D – Lower Level

**Procedure:** Evacuate up the stairs then out the doors. **Emergency Assembly Point (EAPs):** C & D parking lot.

**Safe Area:** Shelter in the area.

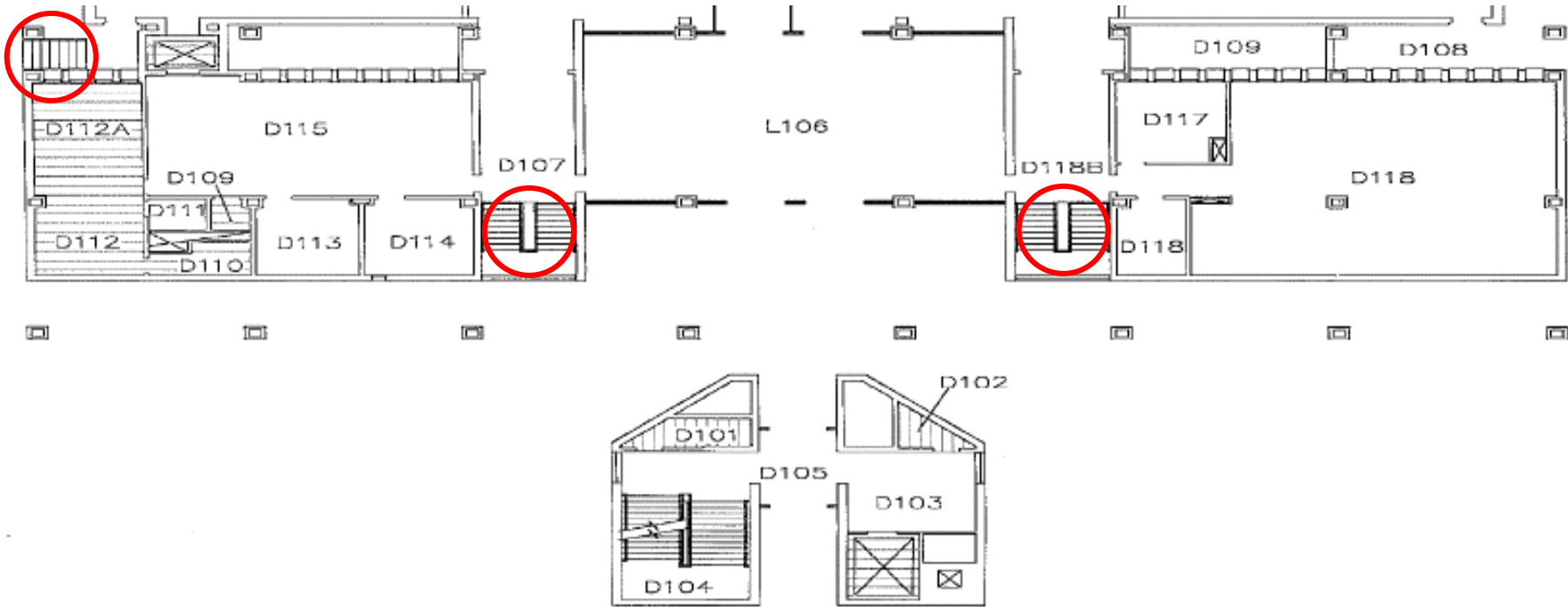




# Tower D – 1<sup>st</sup> Floor

**Procedure:** Evacuate up the stairs then out the doors. **Emergency Assembly Point (EAPs):** C & D parking lot.

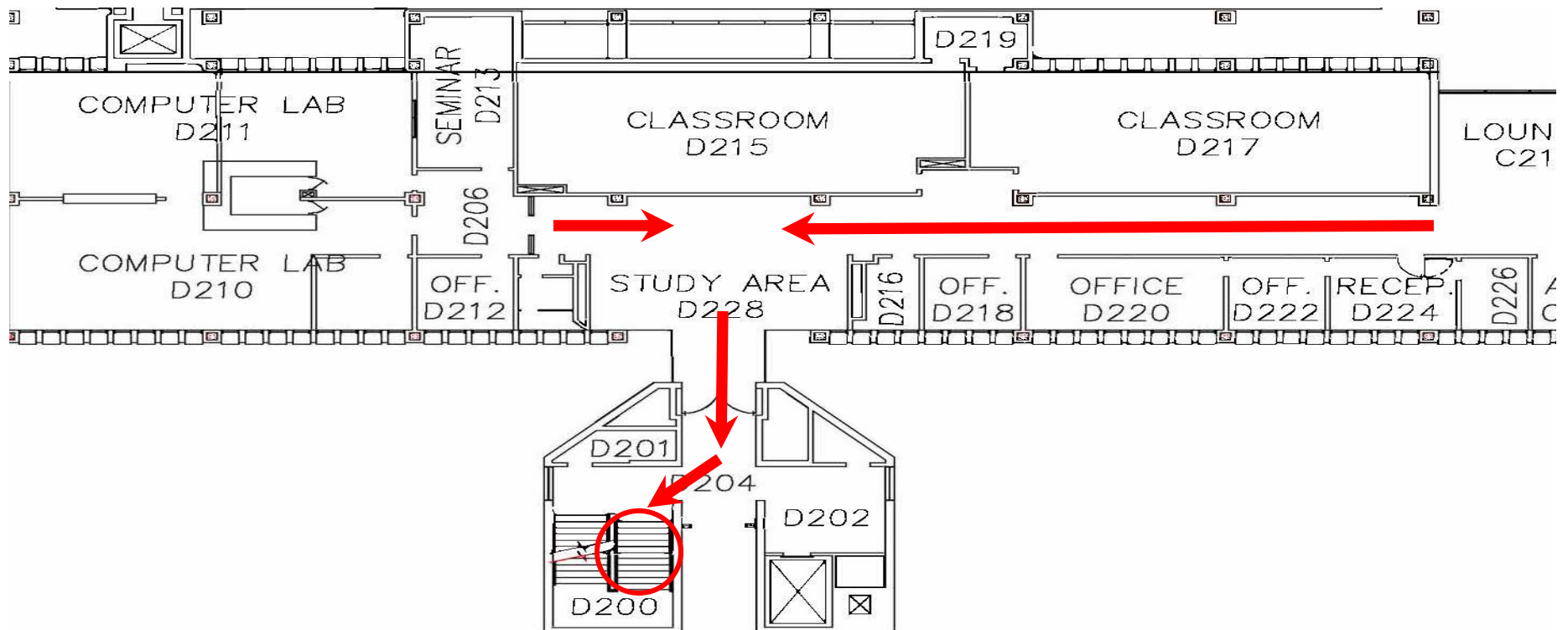
**Safe Area:** Stay in the basement away from windows.



## Tower D – 2<sup>nd</sup> Floor

**Procedure:** Evacuate down the stairs then out the doors. **Emergency Assembly Point (EAPs):** C & D parking lot.

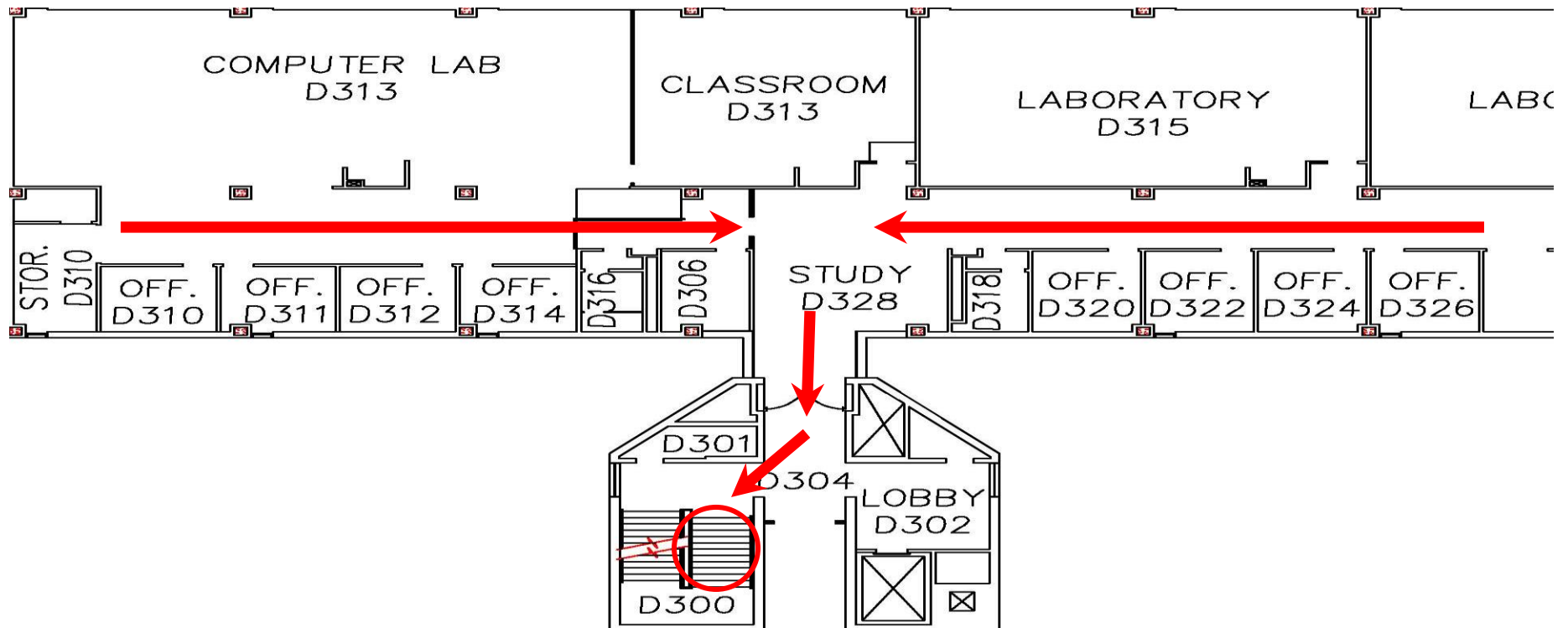
**Safe Area:** Move as far down the stairway as possible or move to the restrooms.



## Tower D – 3<sup>rd</sup> Floor

**Procedure:** Evacuate down the stairs then out the doors. **Emergency Assembly Point (EAPs):** C & D parking lot.

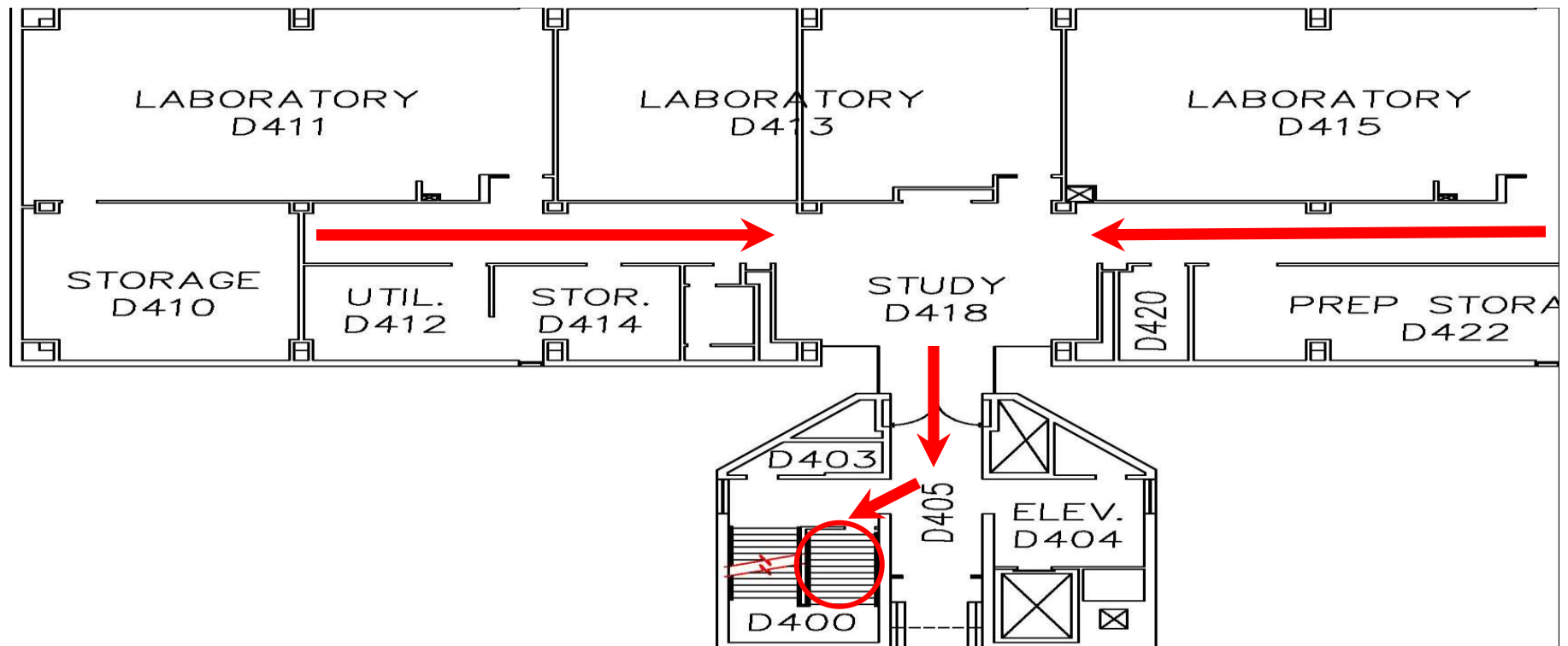
**Safe Area:** Move as far down the stairway as possible or move to the restrooms.



## Tower D – 4<sup>th</sup> Floor

**Procedure:** Evacuate down the stairs then out the doors. **Emergency Assembly Point (EAPs):** C & D parking lot.

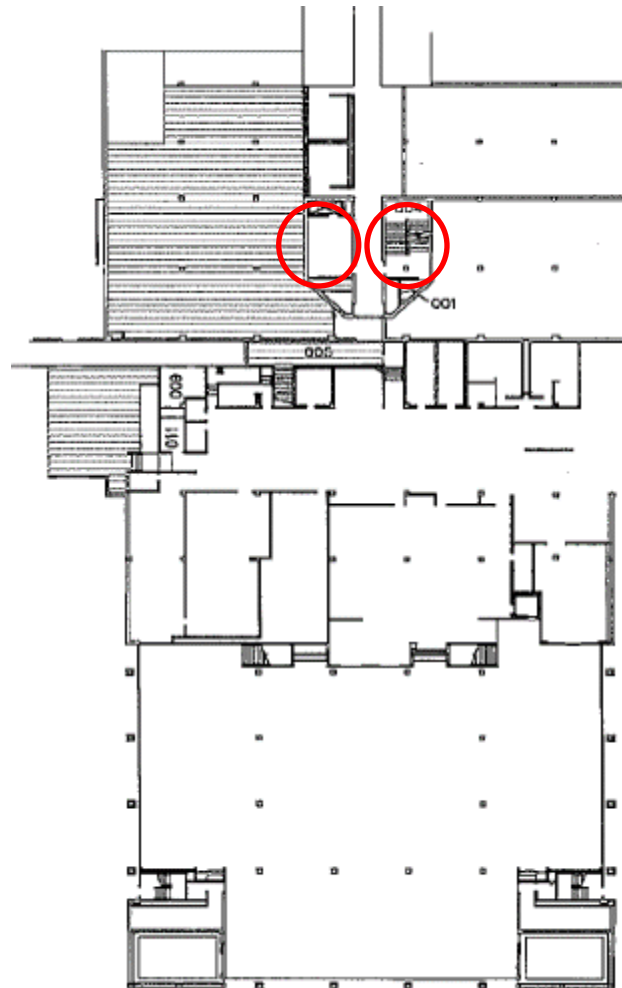
**Safe Area:** Move as far down the stairway as possible.



# Severe Weather and Evacuation Plan West Wing: Tower E – Lower Level

**Procedure:** Evacuate up the stairs to the exit or out the Dock. **Emergency Assembly Point (EAPs):** C & D parking lot.

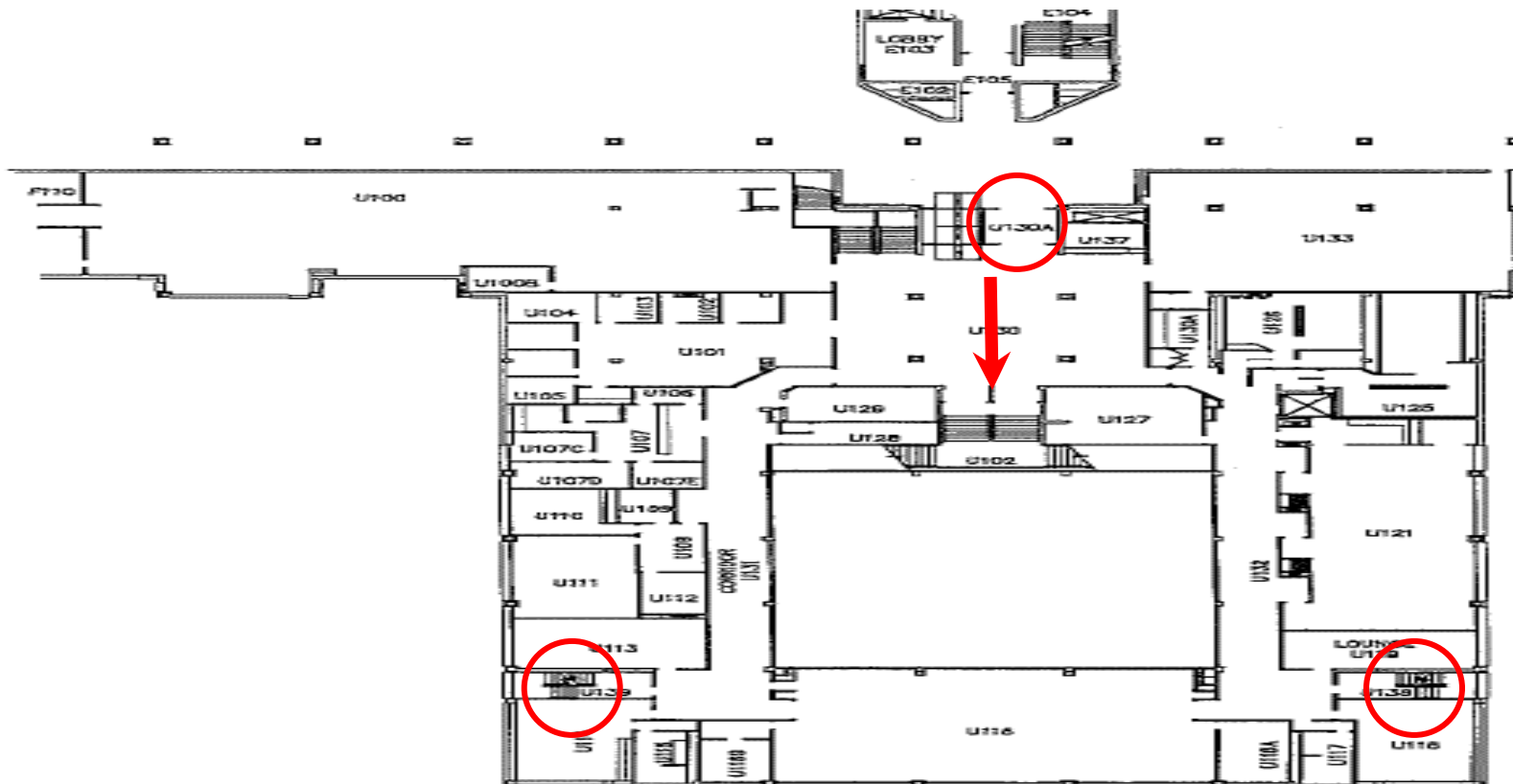
**Safe Area:** Stay in the basement away from windows.



## Tower E – 1<sup>st</sup> Level

**Procedure:** Evacuate out the door, cross the patio, and Assemble on Oakland. Alternatively evacuate down the stairs though the café.  
**Emergency Assembly Point (EAPs):** C & D parking lot.

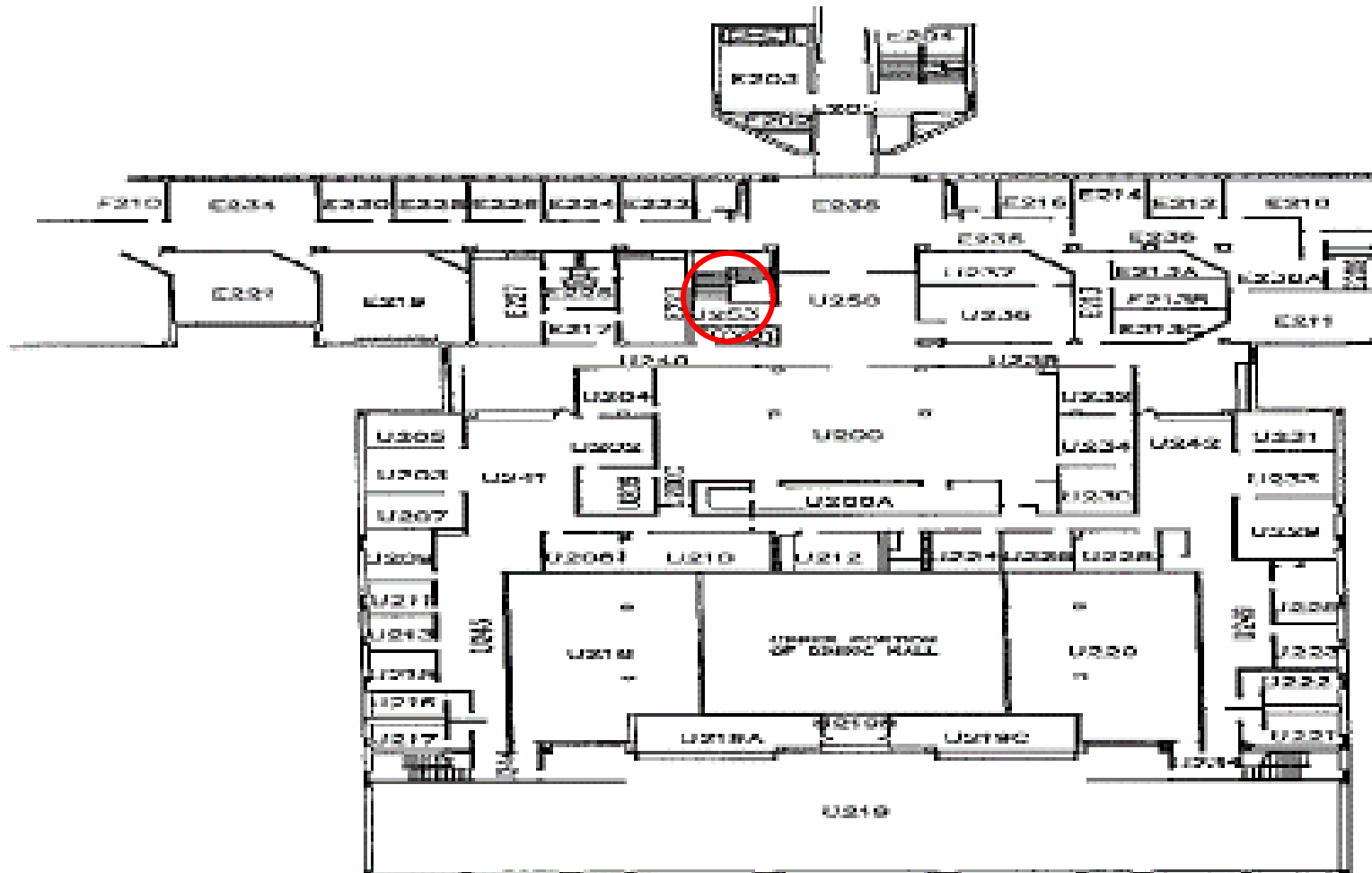
**Safe Area:** Move as far down the stairway as possible or move to the restrooms.



## Tower E – 2<sup>nd</sup> Level

**Procedure:** Evacuate down the stairs to 1<sup>st</sup> level and evacuate. If first floor exit is blocked go down the stairs to O level and exit the door. **Emergency Assembly Point (EAPs):** C & D parking lot.

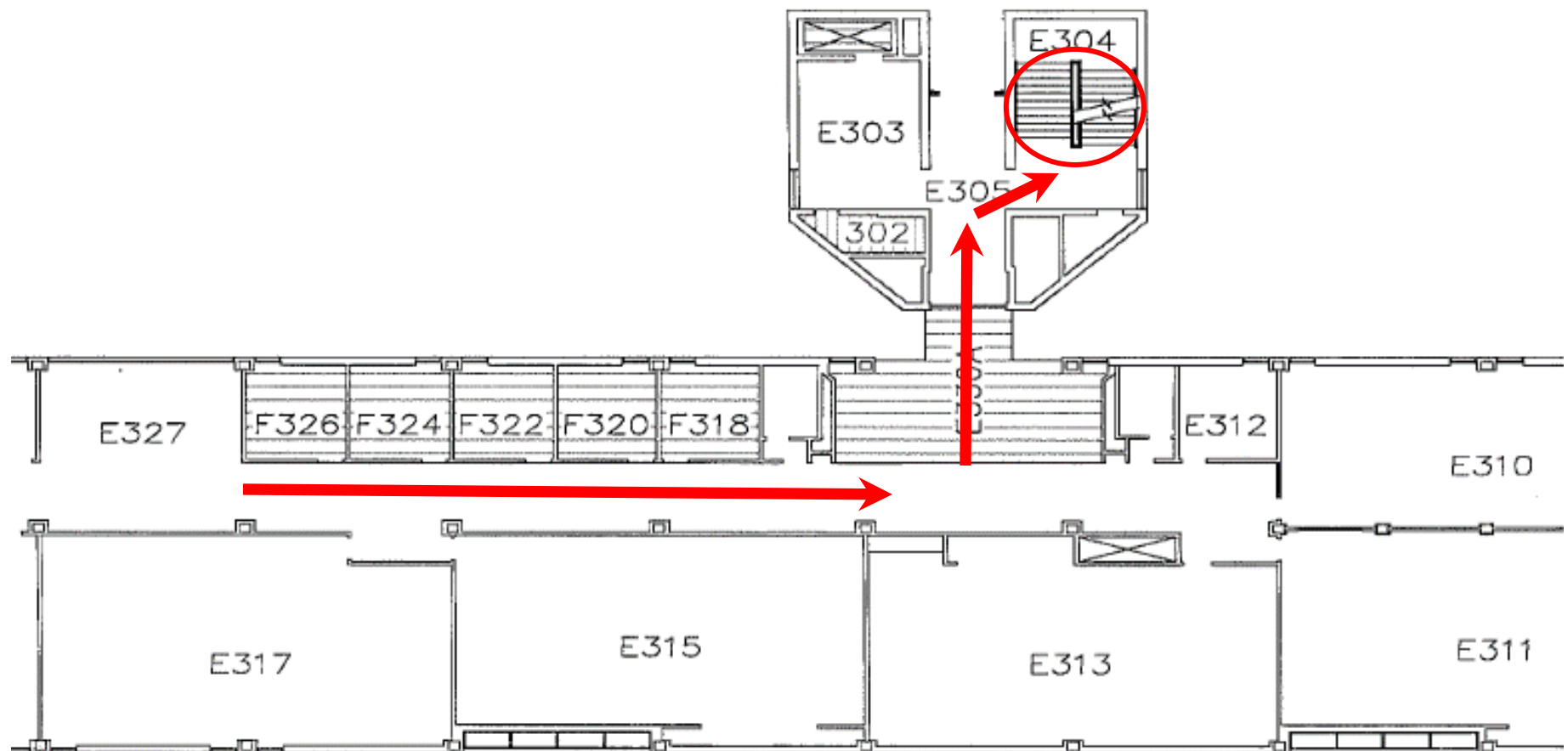
**Safe Area:** Move as far down the stairway as possible or move to the restrooms.



## Tower E – 3<sup>rd</sup> Level

**Procedure:** Evacuate down the stairs to 1<sup>st</sup> level and evacuate. If first floor exit is blocked go down the stairs to O level and exit the door. **Emergency Assembly Point (EAPs):** C & D parking lot.

**Safe Area:** Move as far down the stairway as possible or move to the restrooms.

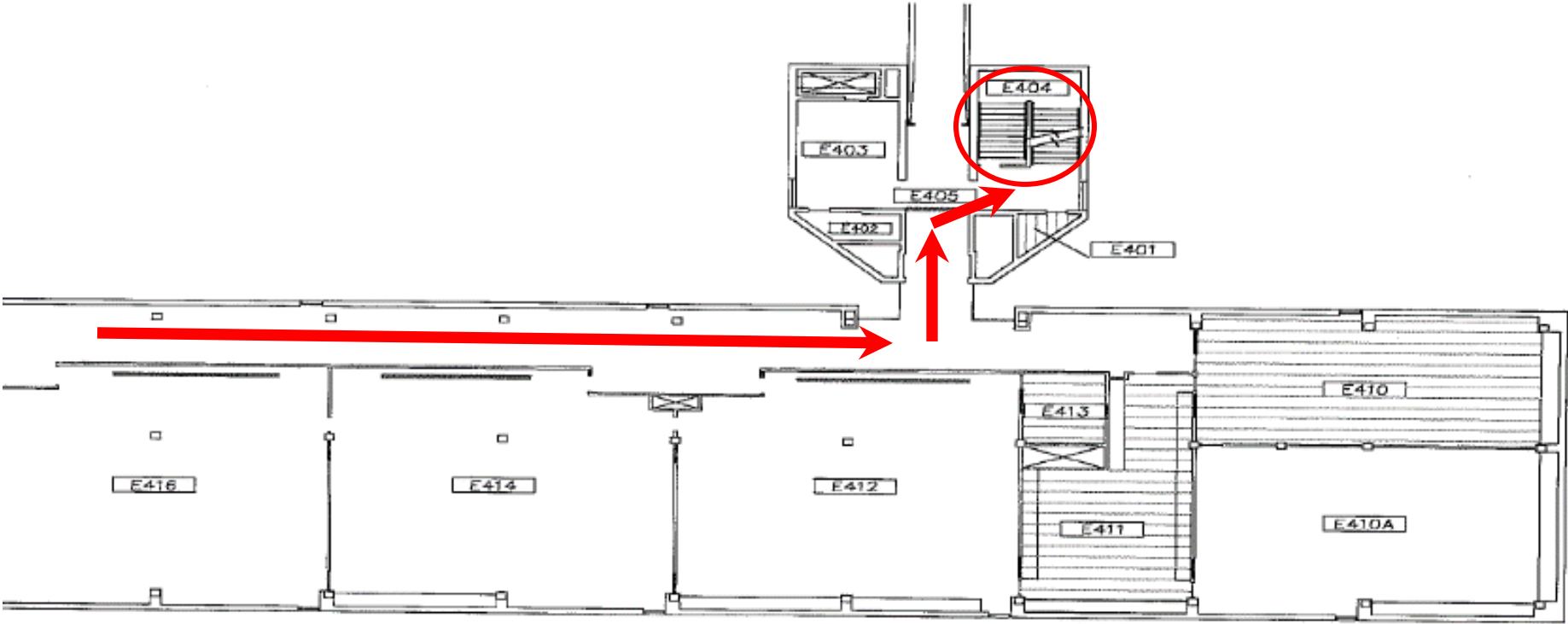




# Tower E – 4<sup>th</sup> Level

**Procedure:** Evacuate down the stairs to 1<sup>st</sup> level and evacuate. If first floor exit is blocked go down the stairs to O level and exit the door. **Emergency Assembly Point (EAPs):** C & D parking lot.

**Safe Area:** Move as far down the stairway as possible.

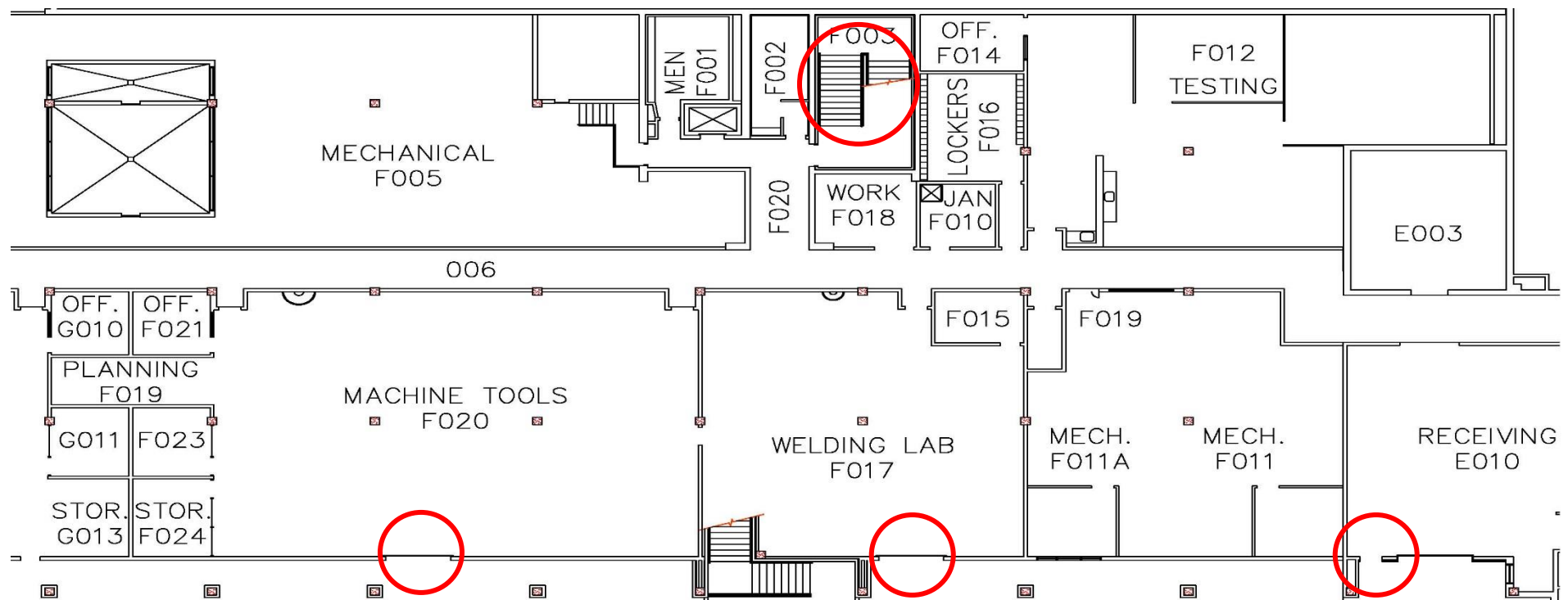


## Tower F – Lower Level

**Procedure:** Evacuate out the doors in the machine labs, dock, or welding lab. If blocked evacuate up the stairs to the patio.

**Emergency Assembly Point (EAPs):** C & D parking lot.

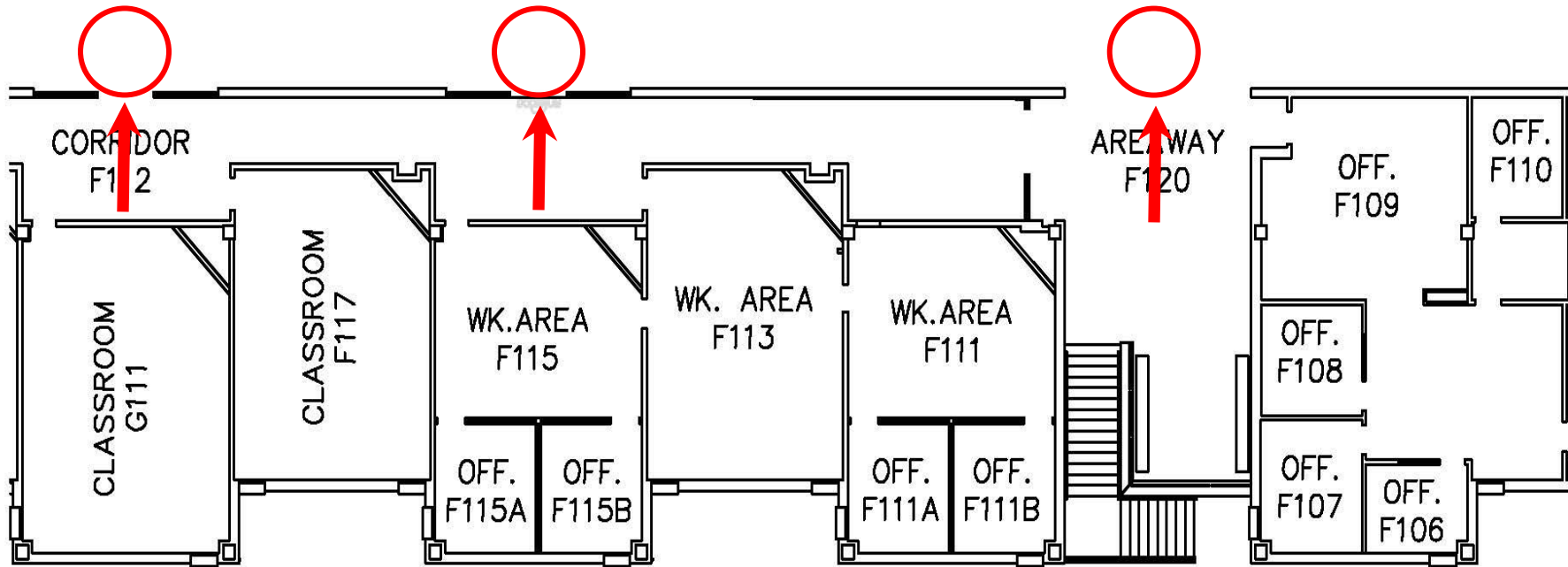
**Safe Area:** Stay in the basement away from windows.



## Tower F – 1<sup>st</sup> Floor

**Procedure:** Evacuate out the doors to the patio. **Emergency Assembly Point (EAPs):** C & D parking lot.

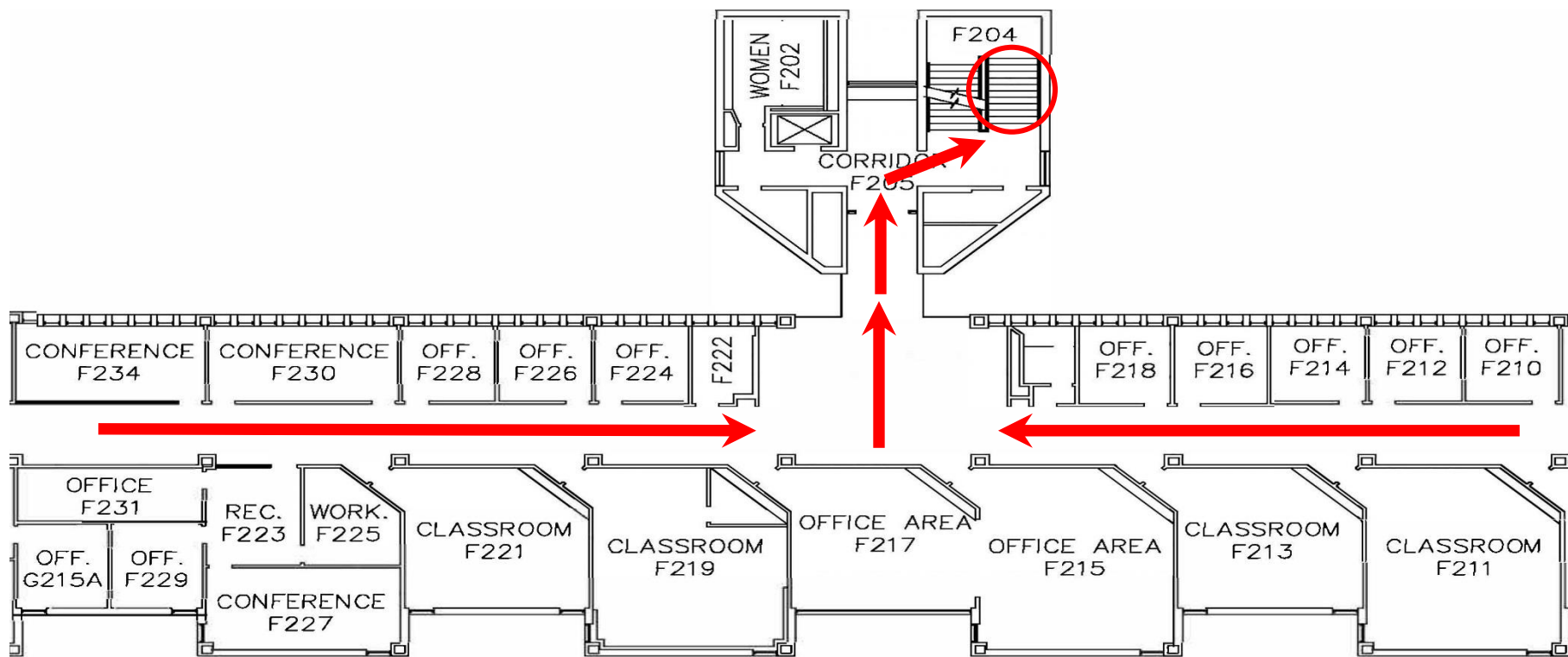
**Safe Area:** Move as far down the stairway as possible or move to the restrooms.



## Tower F – 2<sup>nd</sup> Floor

**Procedure:** Evacuate down the stairs to the first level and then out the doors to the patio.

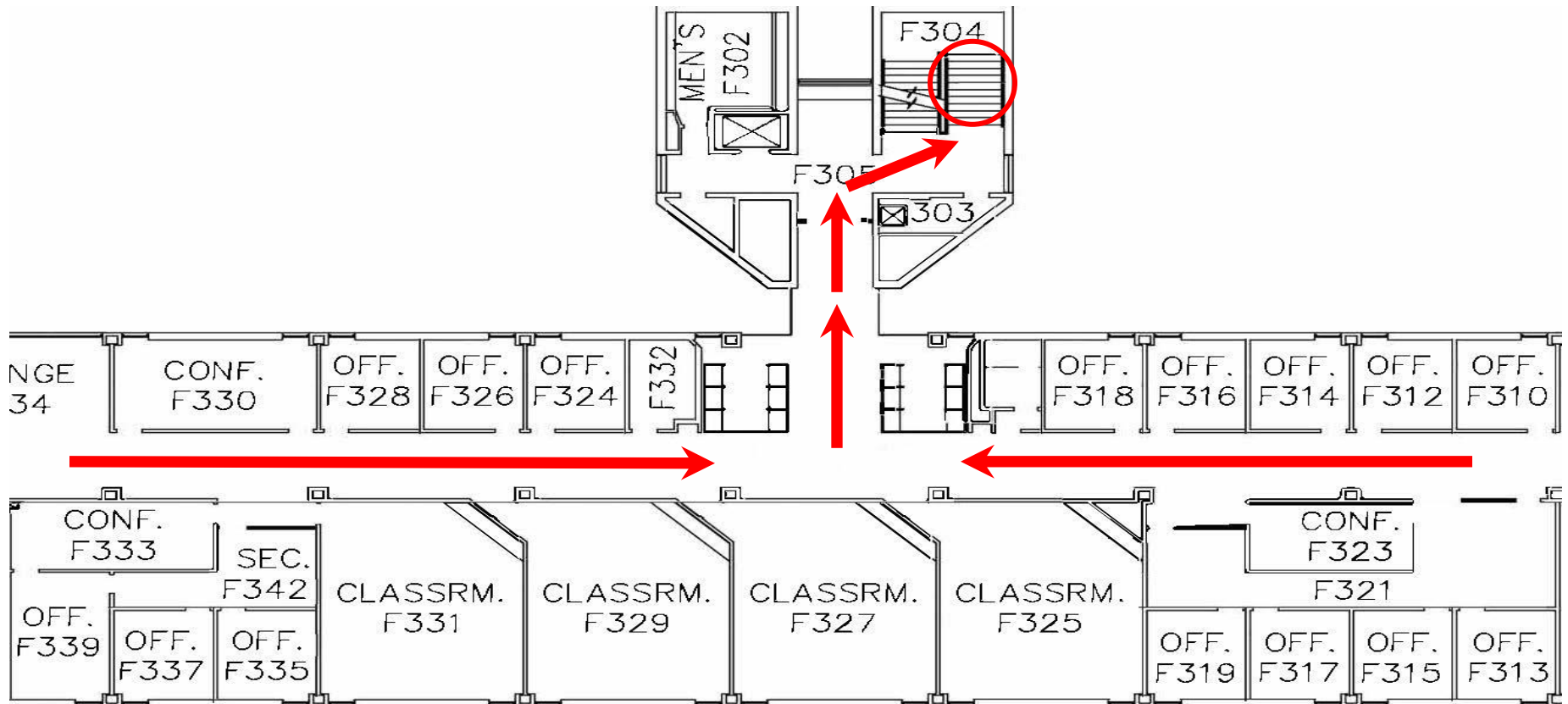
**Emergency Assembly Point (EAPs):** C & D parking lot.      **Safe Area:** Move as far down the stairway as possible or move to the restrooms.



## Tower F – 3rd Floor

**Procedure:** Evacuate down the stairs to the first level and then out the doors to the patio.

**Emergency Assembly Point (EAPs):** C & D parking lot.     **Safe Area:** Move as far down the stairway as possible or move to the restrooms.

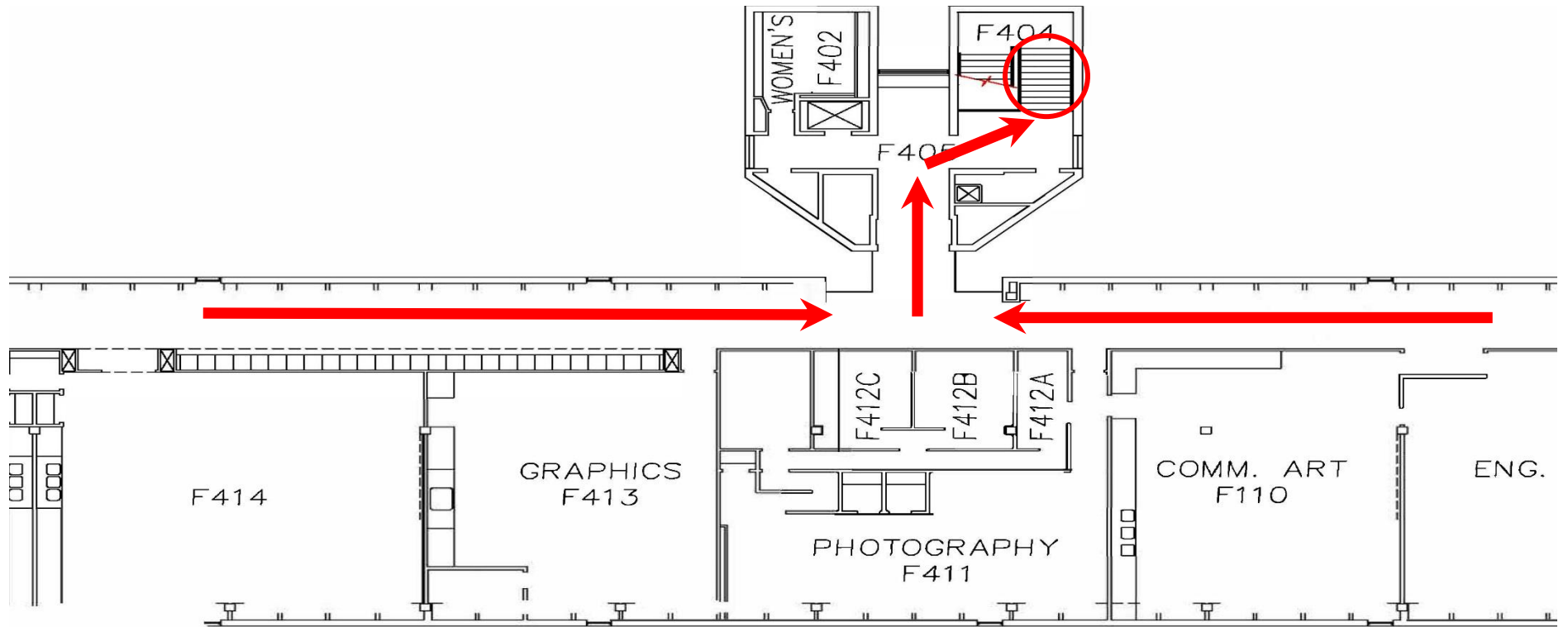


## Tower F – 4th Floor

**Procedure:** Evacuate down the stairs to the first level and then out the doors to the patio.

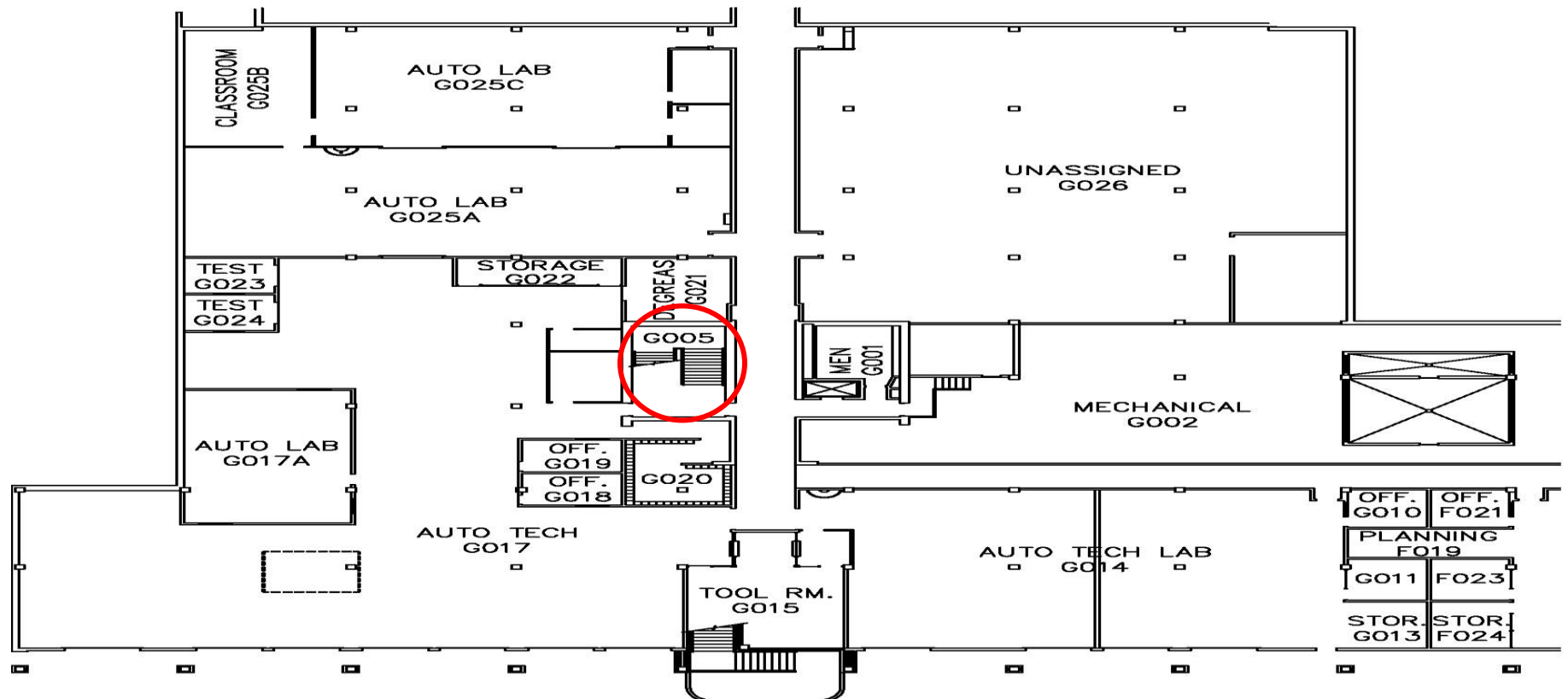
**Emergency Assembly Point (EAPs):** C & D parking lot.

**Safe Area:** Move as far down the stairway as possible.



## Tower G – Lower Level

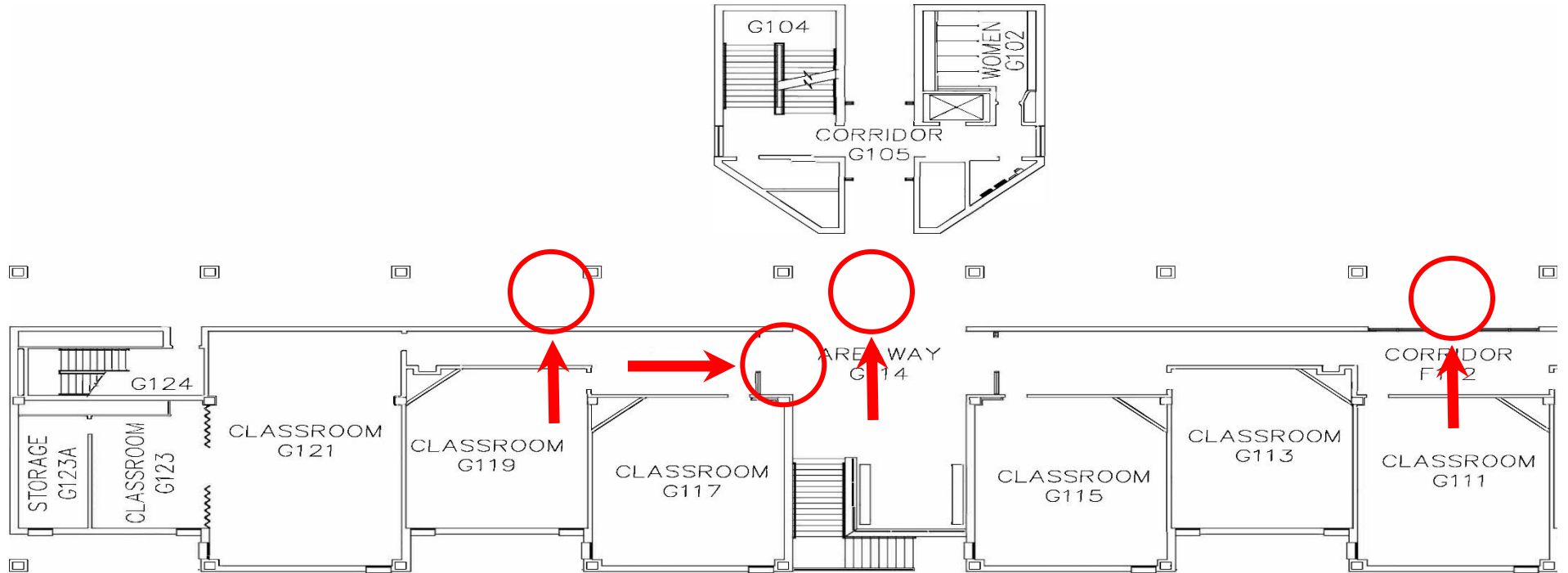
**Procedure:** Evacuate out the doors in the auto shop. If blocked evacuate up the stairs to the patio. **Emergency Assembly Point (EAPs):** C & D parking lot. **Safe Area:** Stay in the basement away from windows.



## Tower G – 1<sup>st</sup> Floor

**Procedure:** Evacuate out the doors to the patio. **Emergency Assembly Point (EAPs):** C & D parking lot.

**Safe Area:** Move as far down the stairway as possible or move to the restrooms.



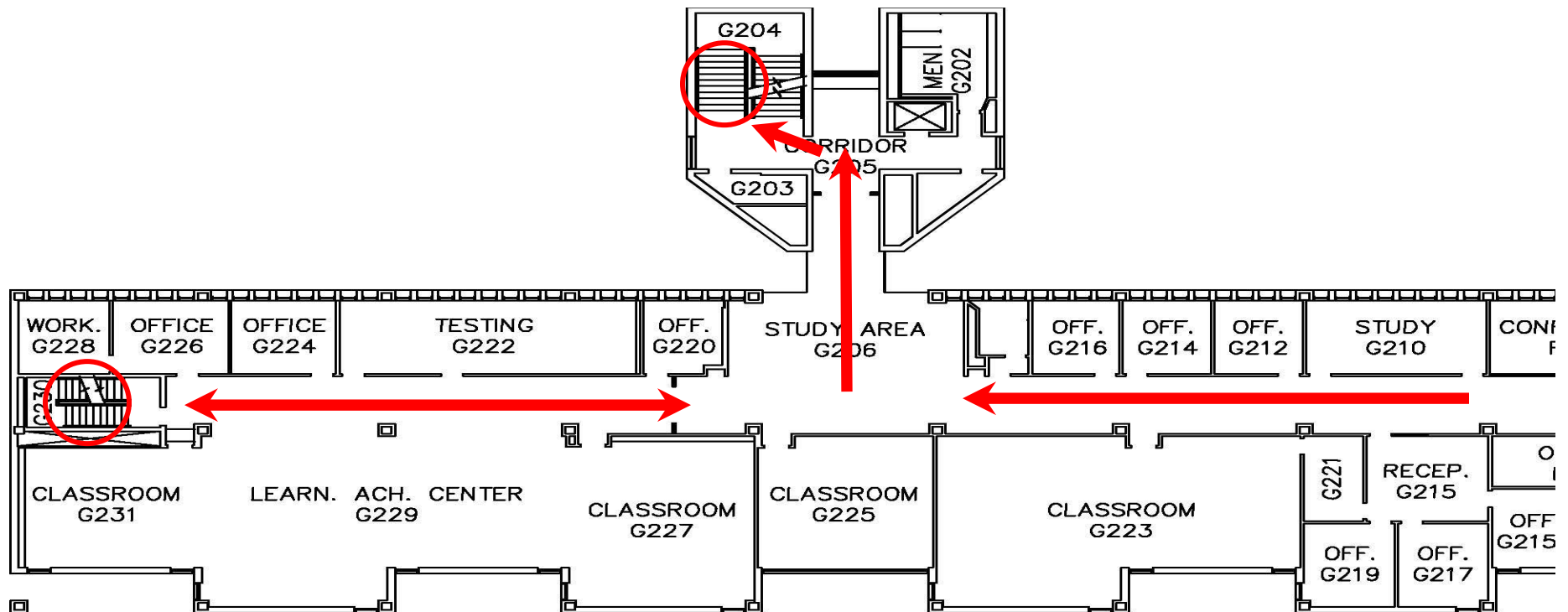


## Tower G – 2<sup>nd</sup> Floor

**Procedure:** Evacuate down the stairs to the first level and then out the doors to the patio.

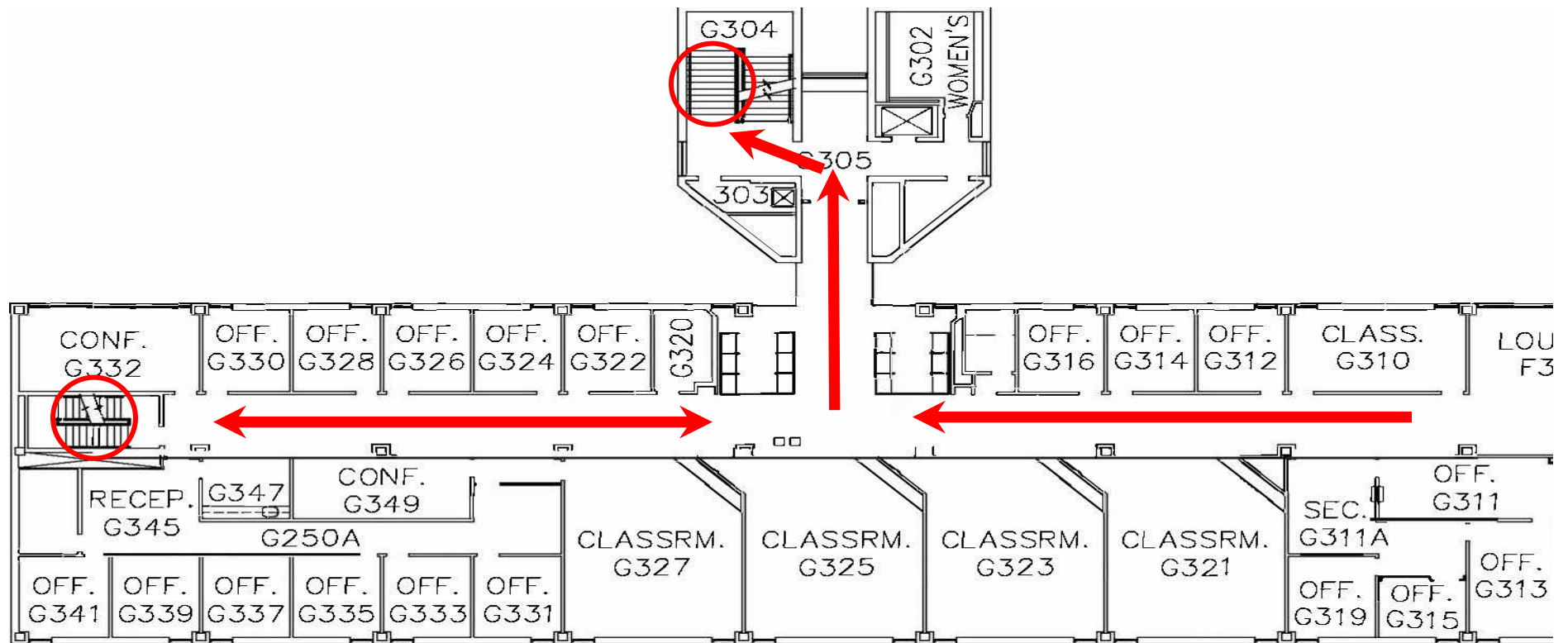
**Emergency Assembly Point (EAPs):** C & D parking lot.

**Safe Area:** Move as far down the stairway as possible or move to the restrooms.



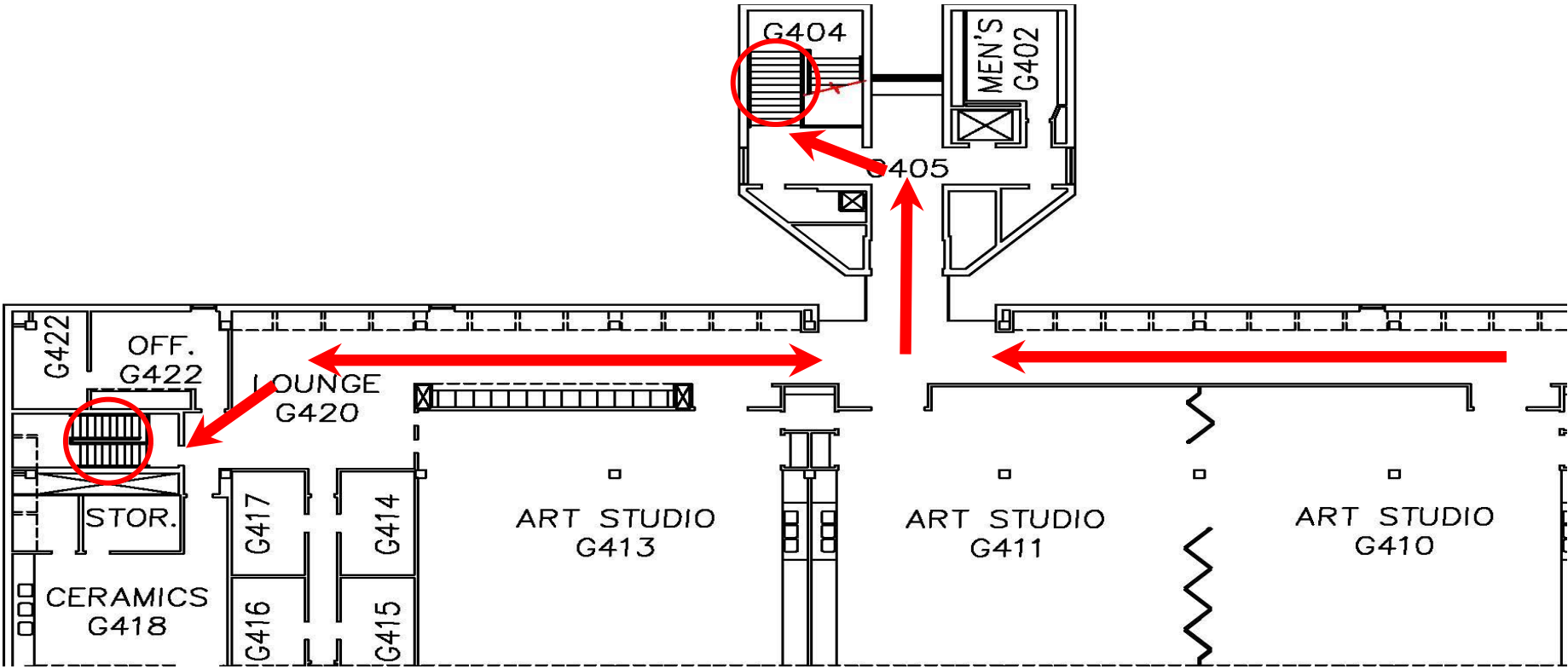
## Tower G – 3<sup>rd</sup> Floor

**Procedure:** Evacuate down the stairs to the first level and then out the doors to the patio. **Emergency Assembly Point (EAPs):** C & D parking lot. **Safe Area:** Move as far down the stairway as possible or move to the restrooms.



# Tower G – 4<sup>th</sup> Floor

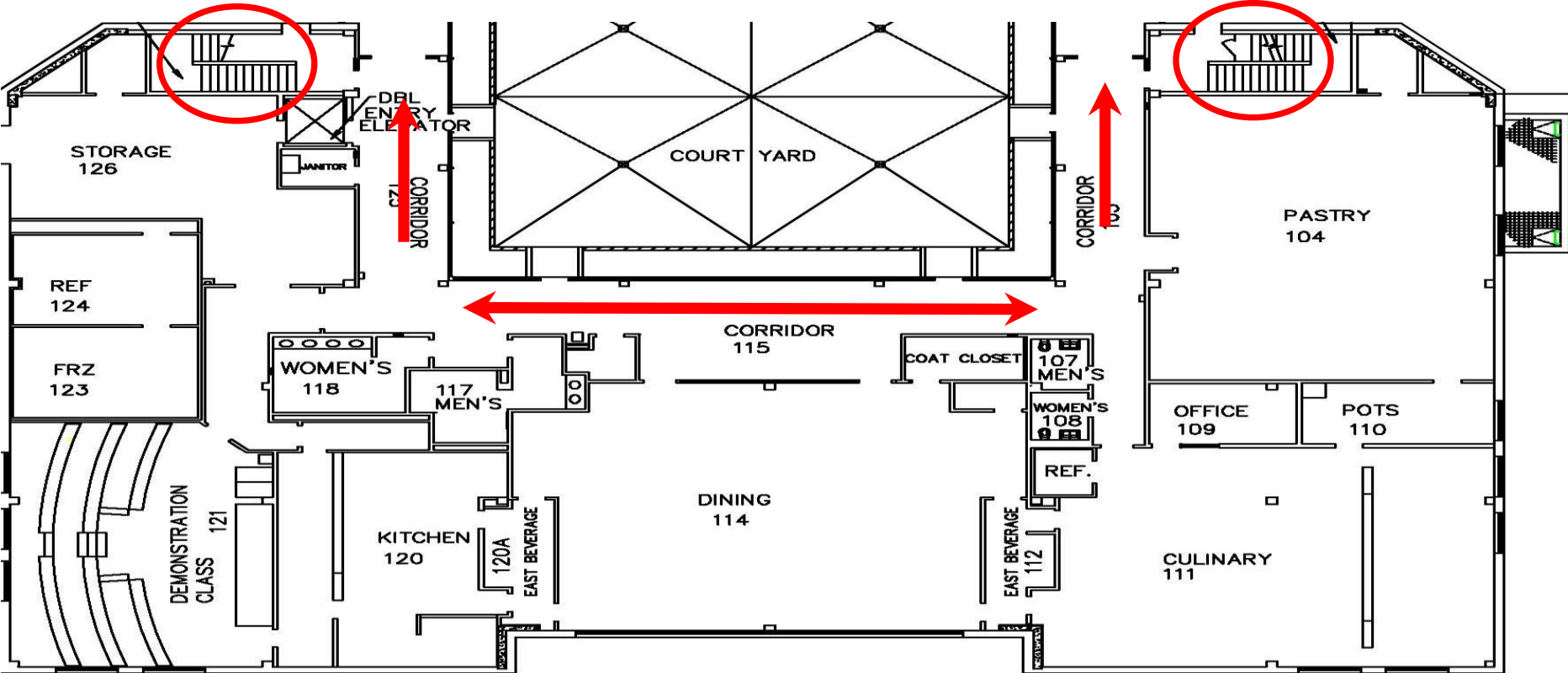
**Procedure:** Evacuate down the stairs to the first level and then out the doors to the patio. **Emergency Assembly Point (EAPs):** C & D parking lot. **Safe Area:** Move as far down the stairway as possible.



# Severe Weather and Evacuation Plan: Hospitality Studies – 1<sup>st</sup> Floor

**Procedure:** Evacuate out the doors. **Emergency Assembly Point (EAPs):** C & D parking lot.

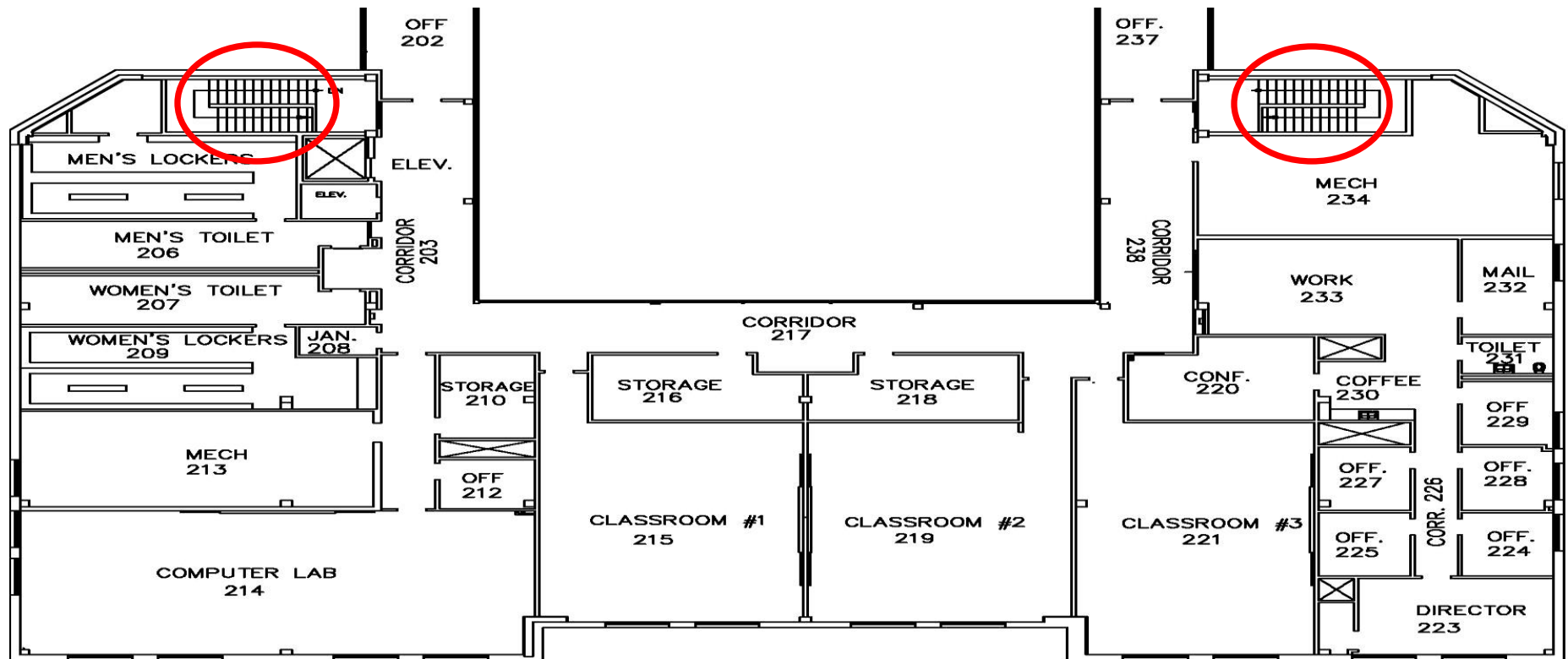
**Safe Area:** Move as far down the stairway as possible or move to the restrooms.



## Hospitality Studies – 2<sup>nd</sup> Floor

**Procedure:** Evacuate down the stairs the out the doors. **Emergency Assembly Point (EAPs):** C & D parking lot.

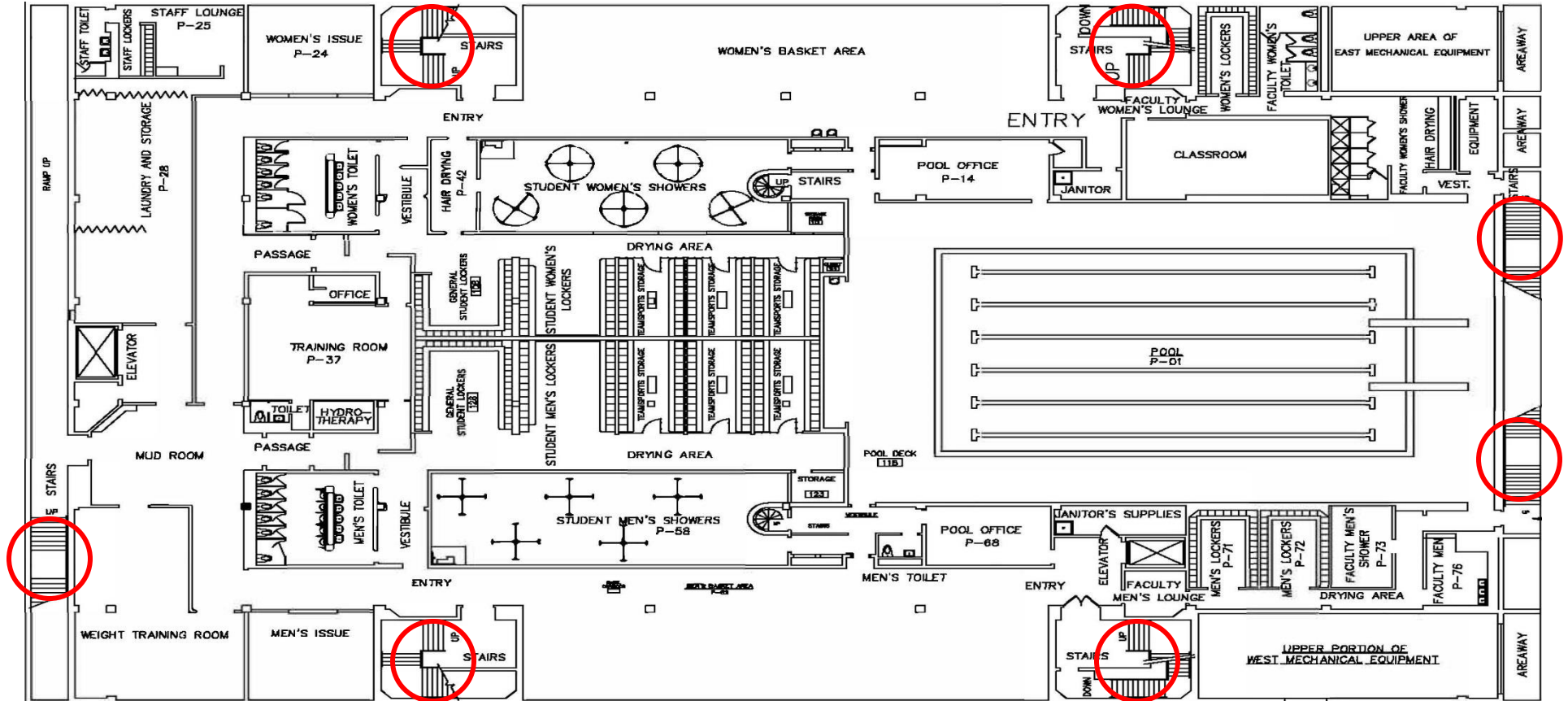
**Safe Area:** Move as far down the stairway as possible.



# Athletic Building – Basement/Pool

**Procedure:** Evacuate to the stairs to the first floor. **Emergency Assembly Point (EAPs):** Softball field

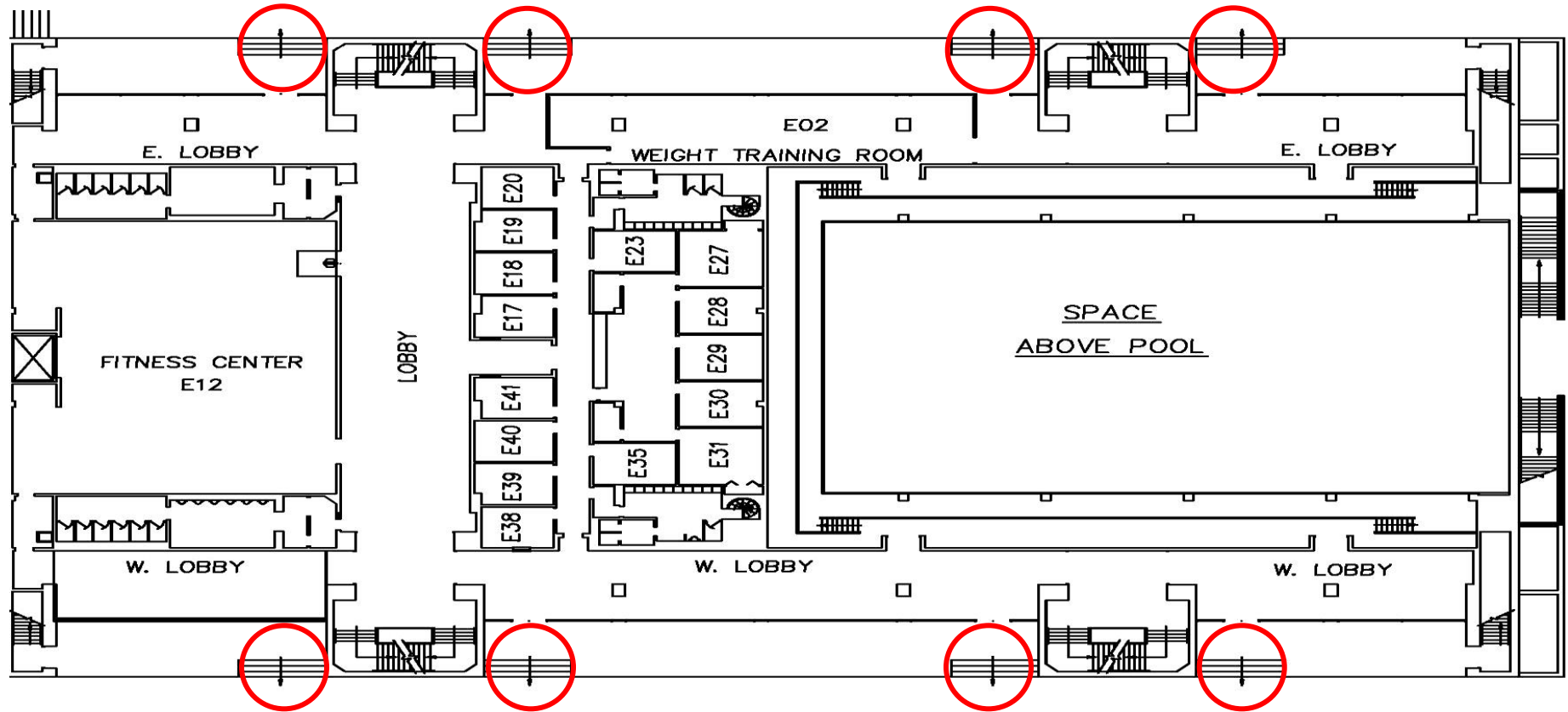
**Safe Area:** Stay in the basement away from windows.



## Athletic Building – Entry Level

**Procedure:** Evacuate out the doors. **Emergency Assembly Point (EAPs):** Softball field

**Safe Area:** Move as far down the stairway as possible or move to the restrooms.

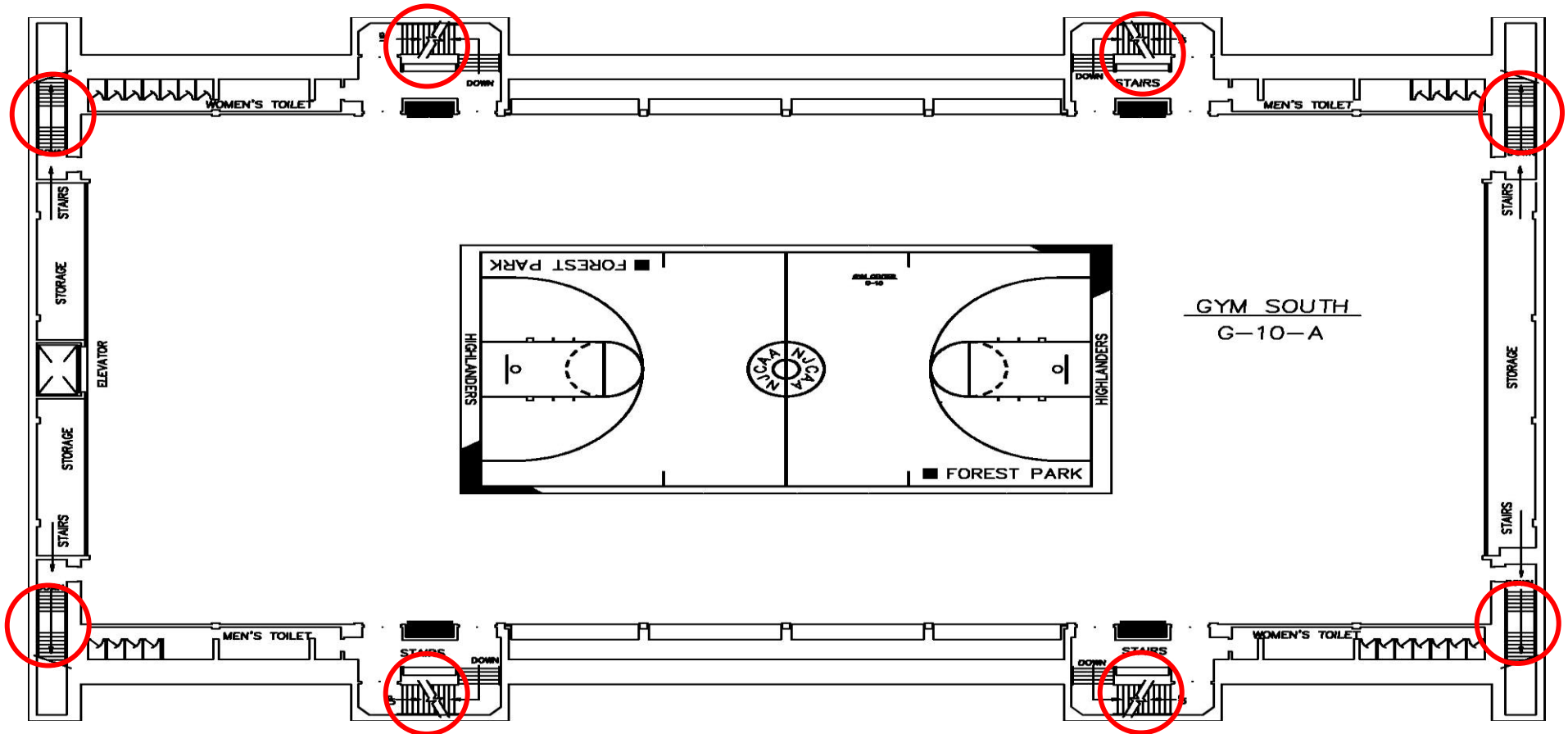


## Athletic Building – Gym 2<sup>nd</sup> Floor

**Procedure:** Exit down the stairs and evacuate out the doors on the entry level.

**Emergency Assembly Point (EAPs):** Softball field

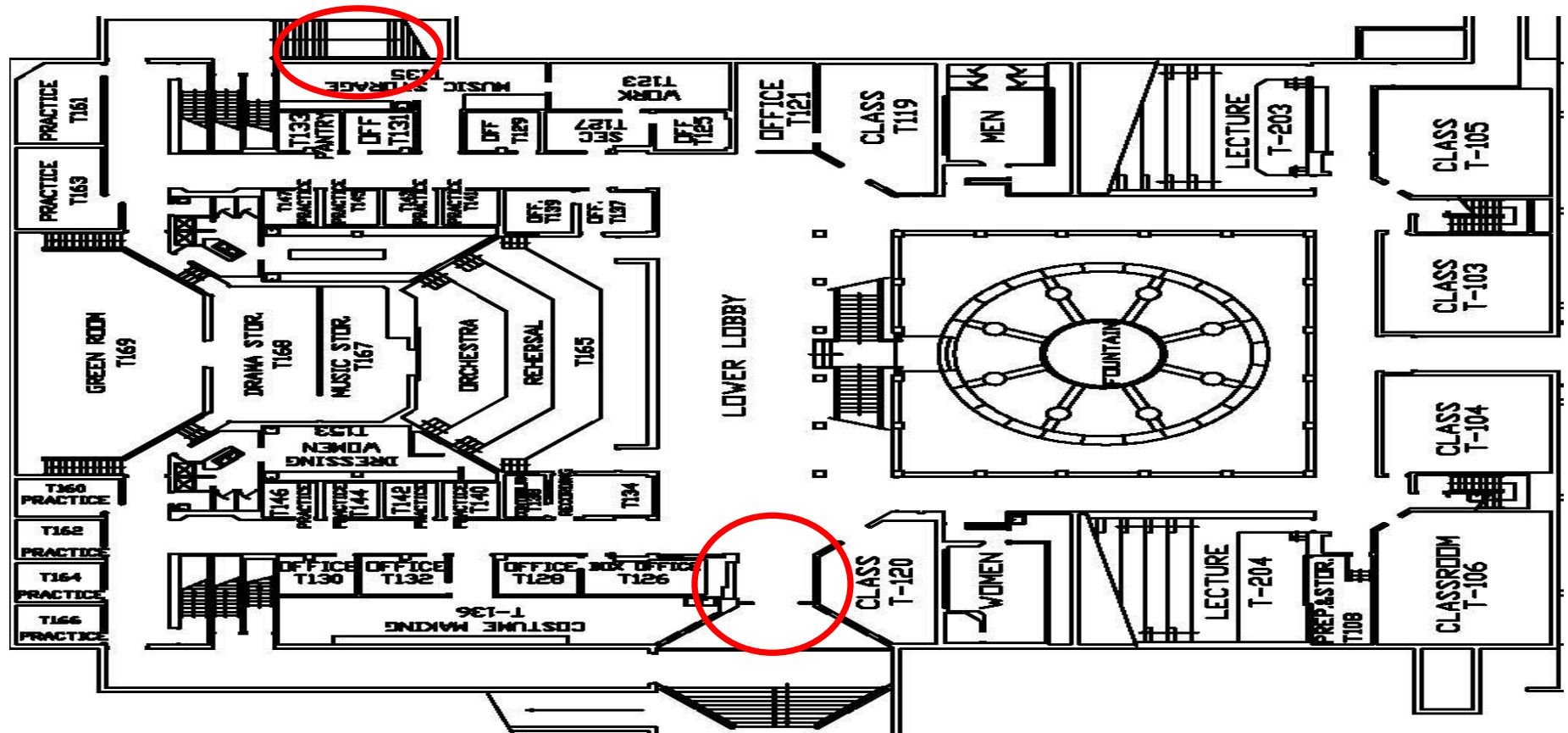
**Safe Area:** Move as far down the stairway as possible.





# Theater –1<sup>st</sup> Floor

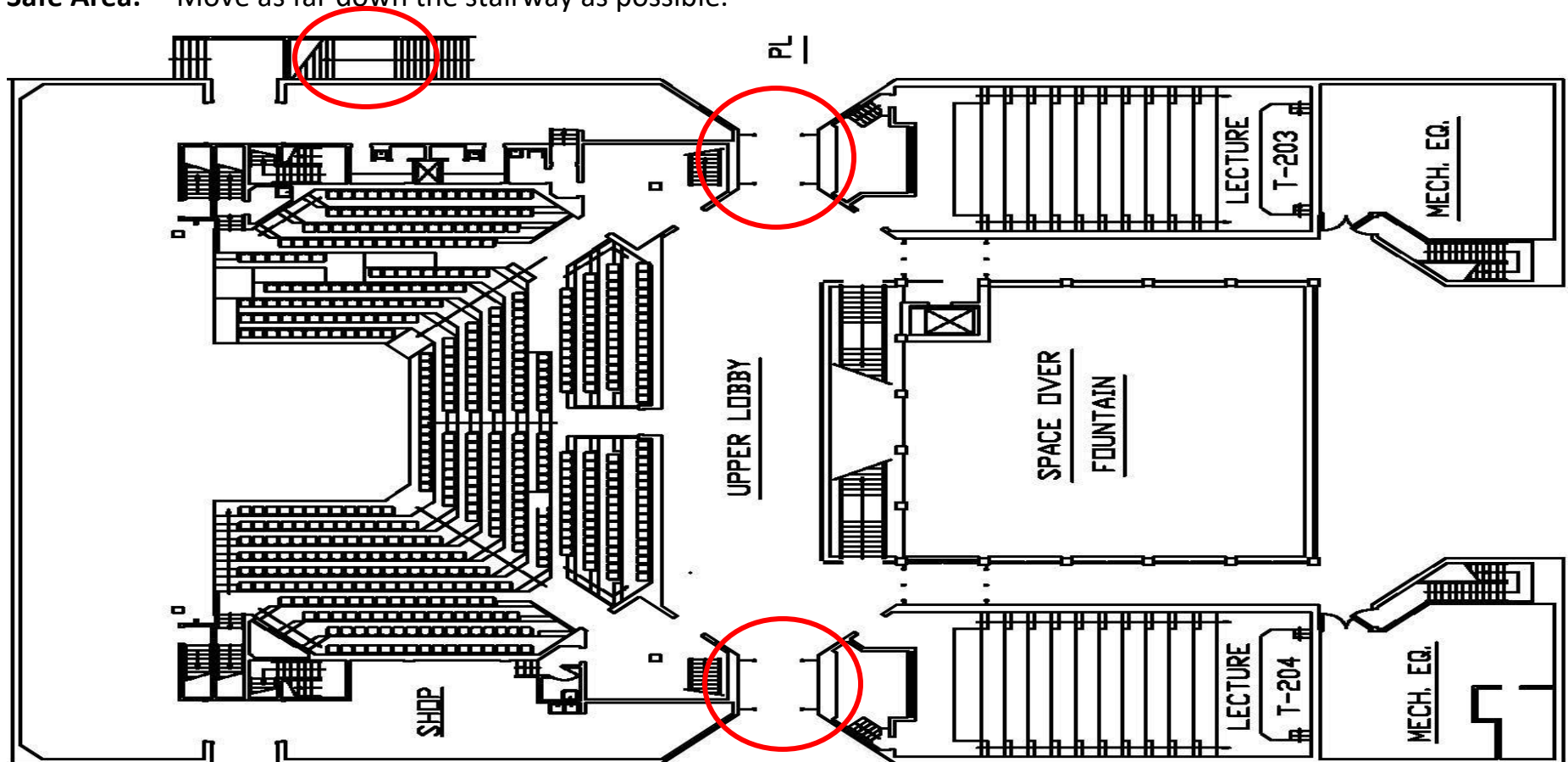
**Procedure:** Exit either through the outside emergency exits or main entrance. **Emergency Assembly Point (EAPs):** C & D parking lot. **Safe Area:** Move as far down the stairway as possible or move to the restrooms.



## Theater – 2<sup>nd</sup> Floor

**Procedure:** Exit out the doors to the patio. **Emergency Assembly Point (EAPs):** C & D parking lot.

**Safe Area:** Move as far down the stairway as possible.



# Theater – Balcony Level

**Procedure:** Exit down the stairs and then out the doors to the patio. **Emergency Assembly Point (EAPs):** C & D parking lot.

**Safe Area:** Move as far down the stairway as possible.

