



Emergency Evacuation Procedure Maps

for:

Saint Louis Community College
Meramec

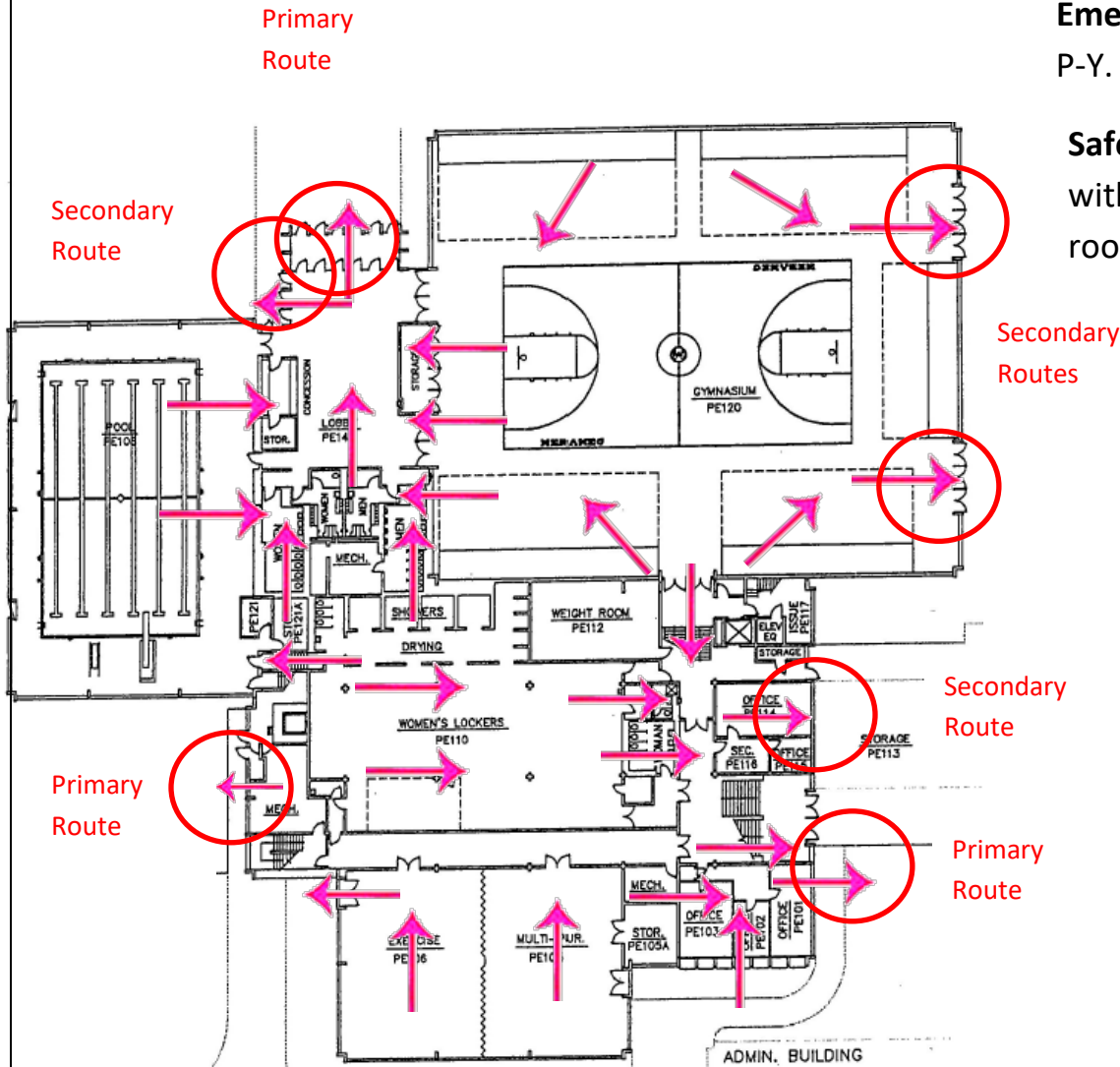
11333 Big Bend Rd, Meramec, MO 63122

Severe Weather and Evacuation Plan-PE Floor 1

Evacuation: Evacuate through the nearest marked exit (Circled) using the routes (Arrows) as marked.

Emergency Assembly Point (EAPs): Faculty & Staff P-Y.

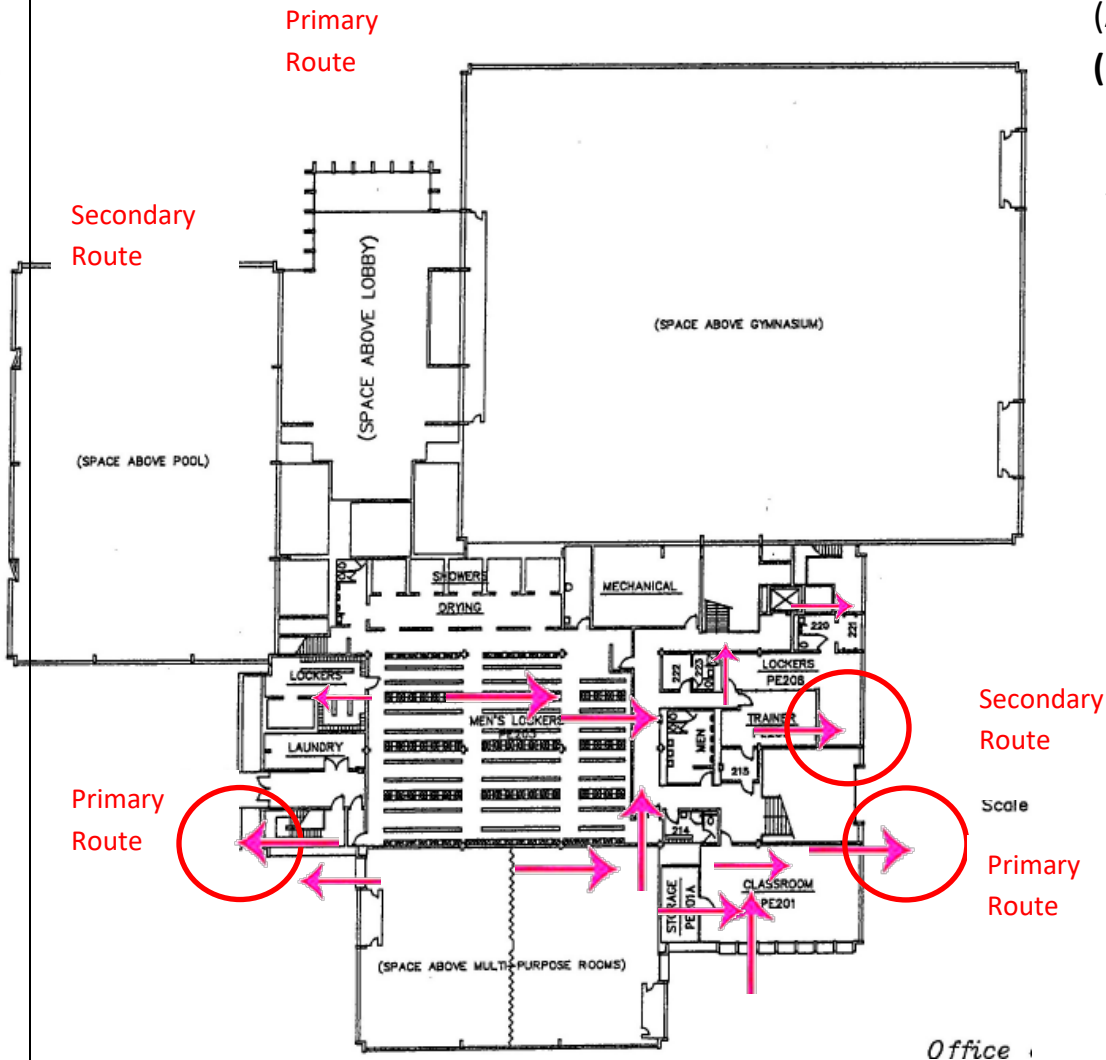
Safe Area: Evacuate to a restroom or room without windows (Shower rooms, office, or weight room).



Severe Weather and Evacuation Plan-PE Floor 2

Evacuation: Evacuate down stairs through the nearest marked exit (Circled) using the routes (Arrows) as marked. **Emergency Assembly Point (EAPs):** Faculty & Staff P-Y.

Safe Area: Evacuate to a restroom or room without windows (Shower rooms, office, or weight room).



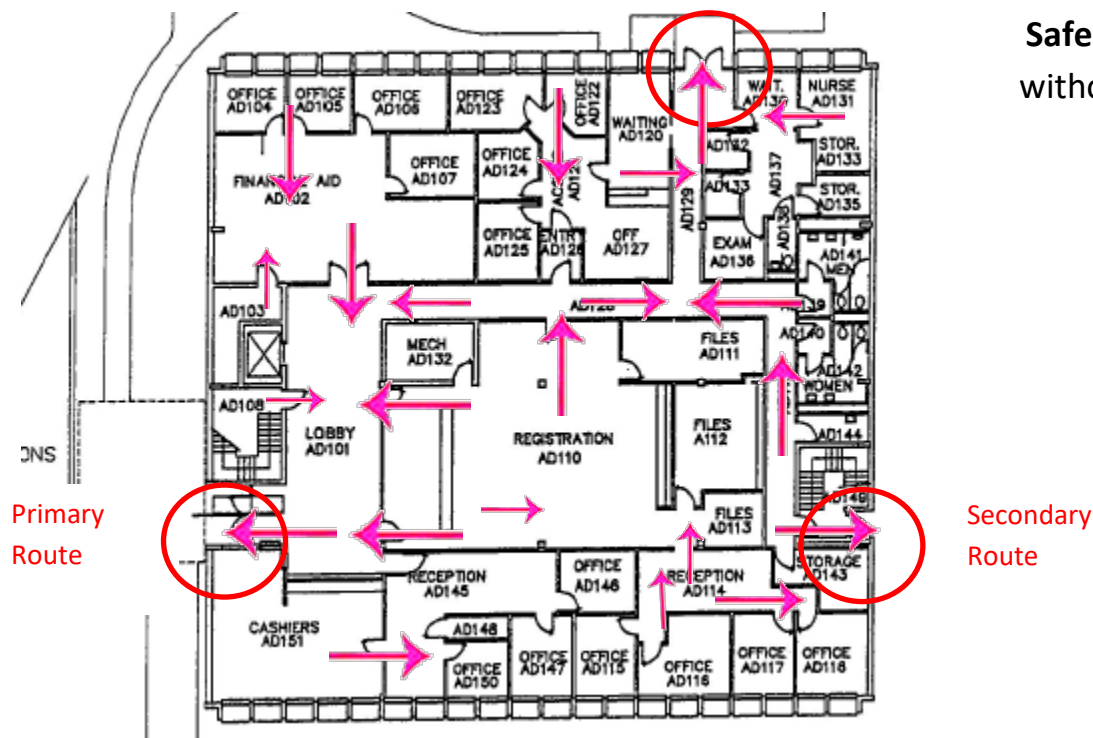
Severe Weather and Evacuation Plan-Admin Floor 1

Primary
Route

Evacuation: Evacuate through the nearest marked exit (Circled) using the routes (Arrows) as marked.

Emergency Assembly Point (EAPs): Faculty & Staff P-Y.

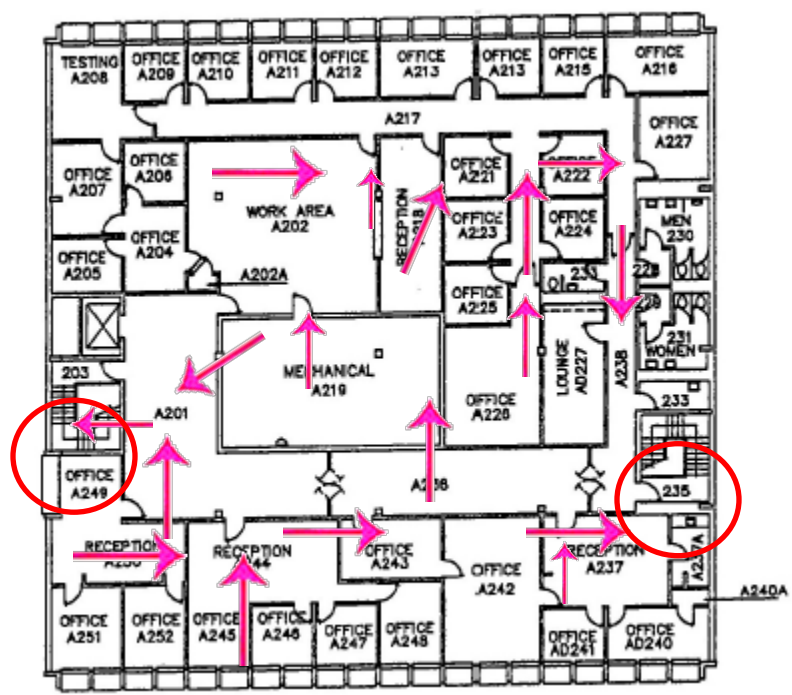
Safe Area: Evacuate to a restroom or room without windows.



Severe Weather and Evacuation Plan-Admin 2nd floor

Evacuation: Evacuate down the stairs and through the nearest marked exit using the routes (Arrows) as marked. **Emergency Assembly Point (EAPs):** Faculty & Staff P-Y.

Safe Area: Evacuate to a restroom or room without windows.



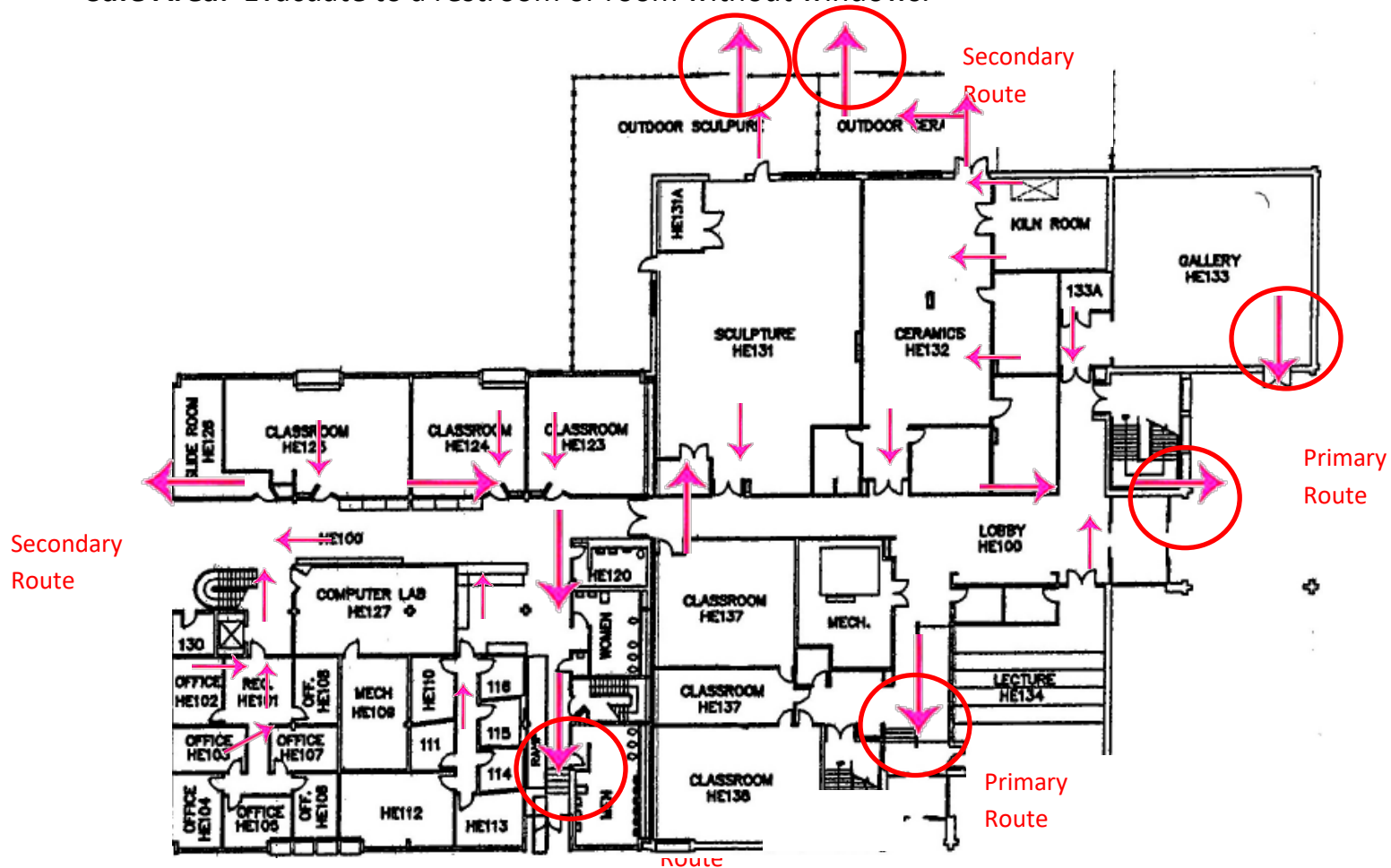
Severe Weather and Evacuation Plan-Humanities East

1st Floor

Evacuation: Evacuate through the nearest marked exit (Circled) using the routes (Arrows) as marked.

Emergency Assembly Point (EAPs): Faculty & Staff P-Y.

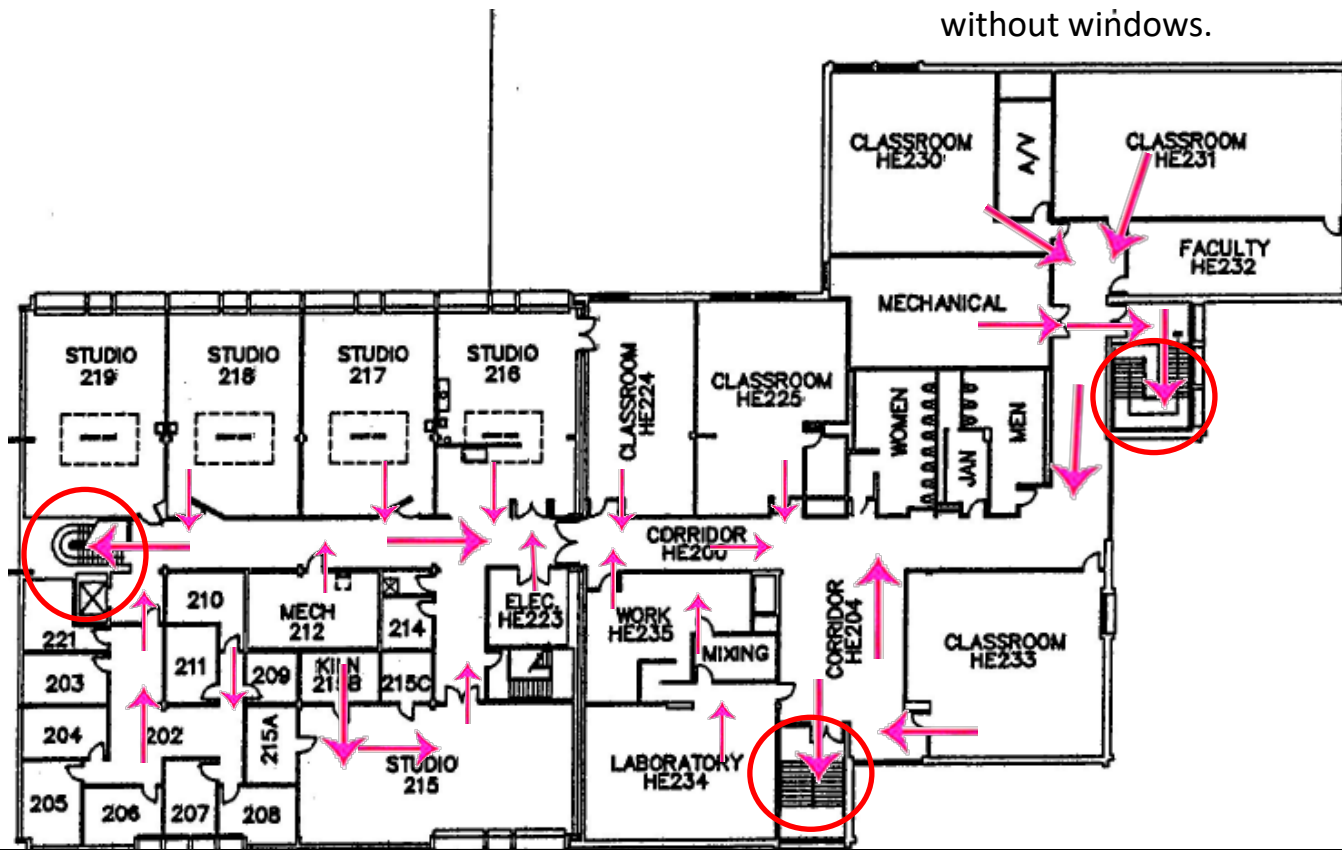
Safe Area: Evacuate to a restroom or room without windows.



Severe Weather and Evacuation Plan-Humanities East 2nd Floor

Evacuation: Evacuate down the stairs and through the nearest marked exit using the routes (Arrows) as marked. **Emergency Assembly Point (EAPs):** Faculty & Staff P-Y.

Safe Area: Evacuate to a restroom or room without windows.



Severe Weather and Evacuation Plan-Humanities West

1st Floor

Secondary
Route

Secondary
Route

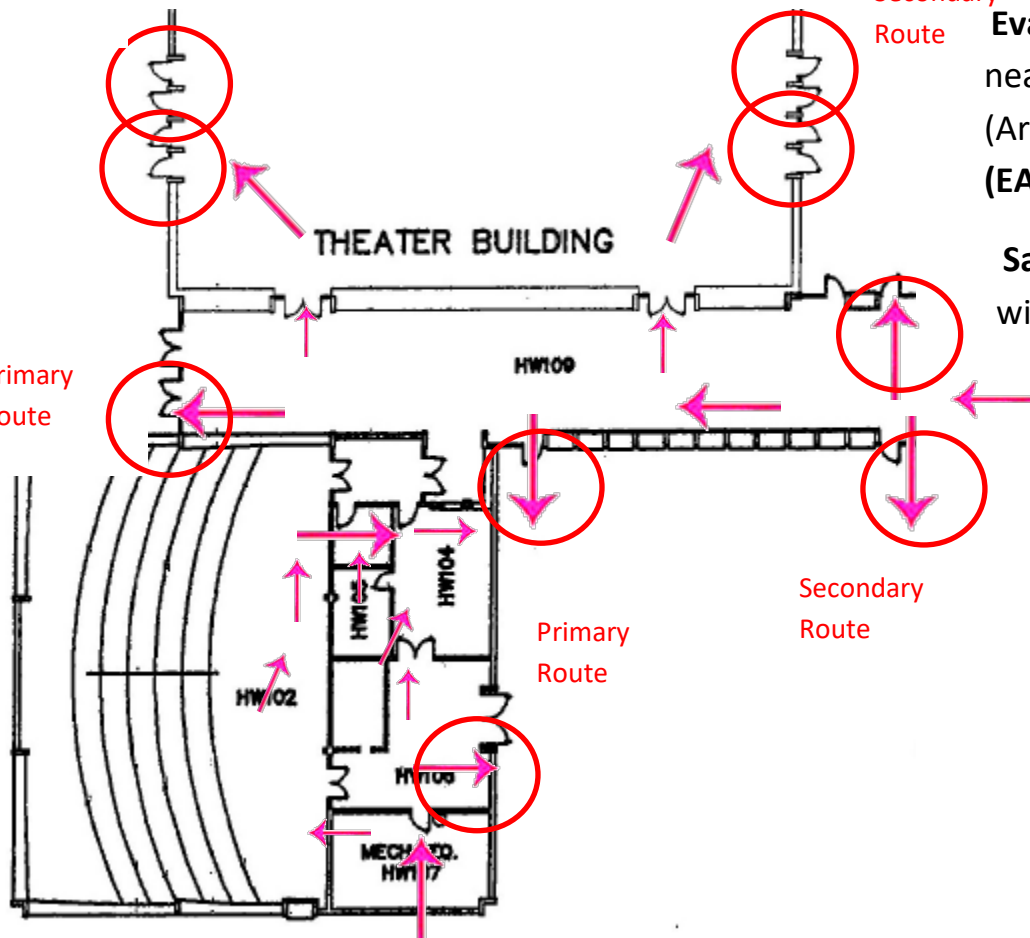
Evacuation: Evacuate through the nearest marked exit (Circled) using the routes (Arrows) as marked. **Emergency Assembly Point (EAPs):** Faculty & Staff P-Y.

Safe Area: Evacuate to a restroom or room without windows.

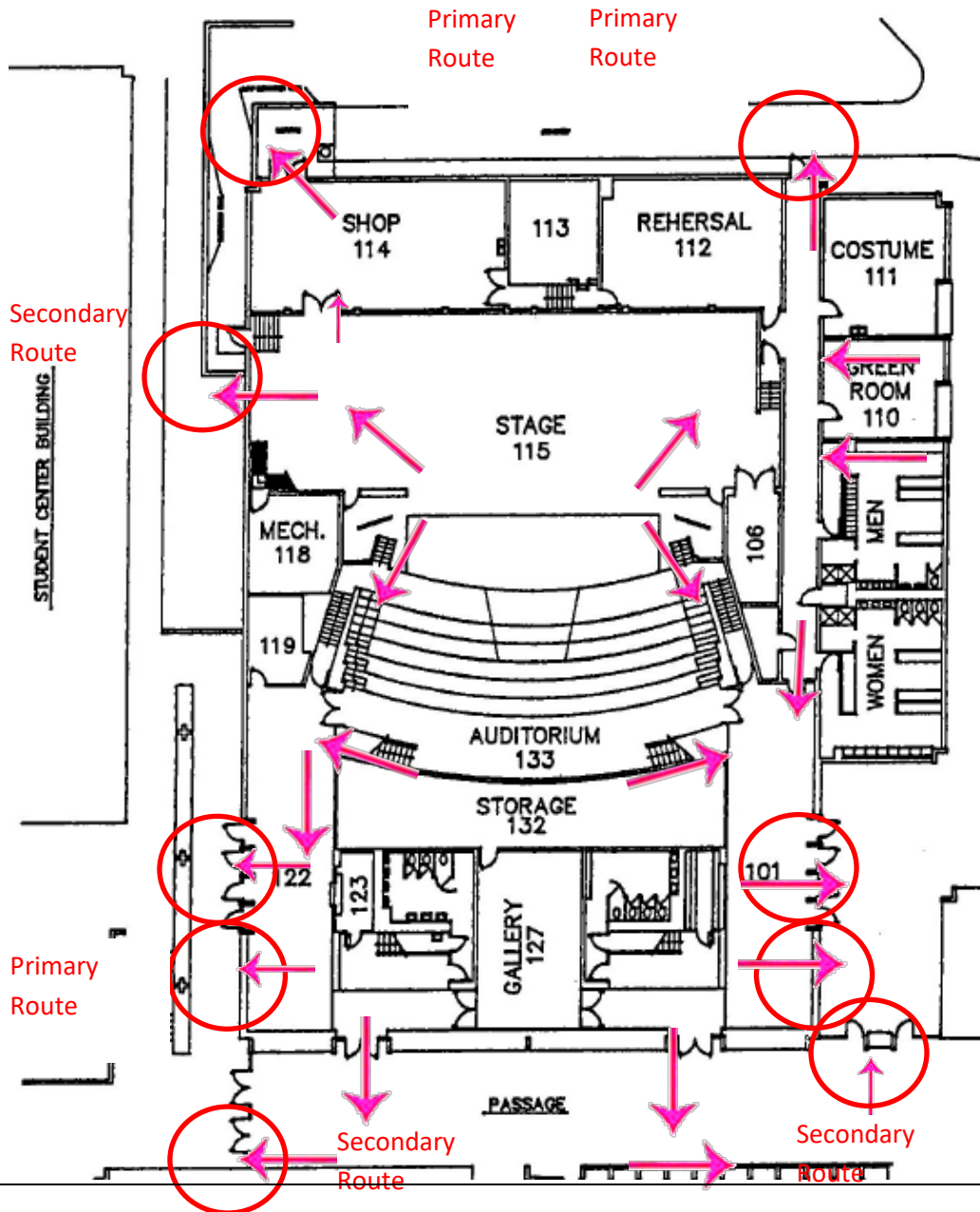
Primary
Route

Secondary
Route

Primary
Route



Severe Weather and Evacuation Plan-Theater



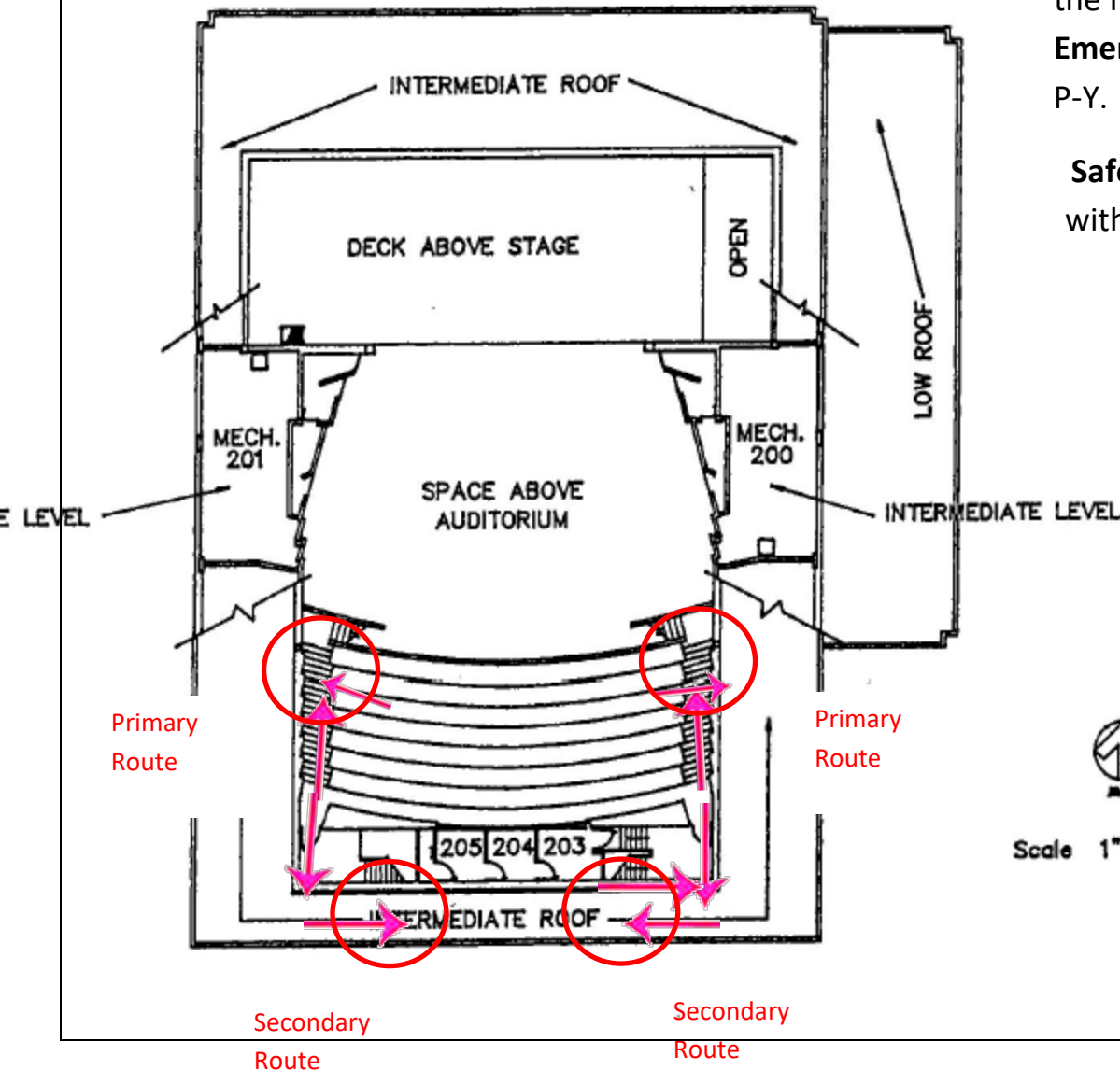
Evacuation: Evacuate through the nearest marked exit (Circled) using the routes (Arrows) as marked. **Emergency Assembly Point (EAPs):** Faculty & Staff P-Y.

Safe Area: Evacuate to a restroom or room without windows.

Severe Weather and Evacuation Plan-Theater Balcony

Evacuation: Evacuate down the stairs and through the nearest marked exit (Circled) on the first floor using the routes (Arrows) as marked.
Emergency Assembly Point (EAPs): Faculty & Staff P-Y.

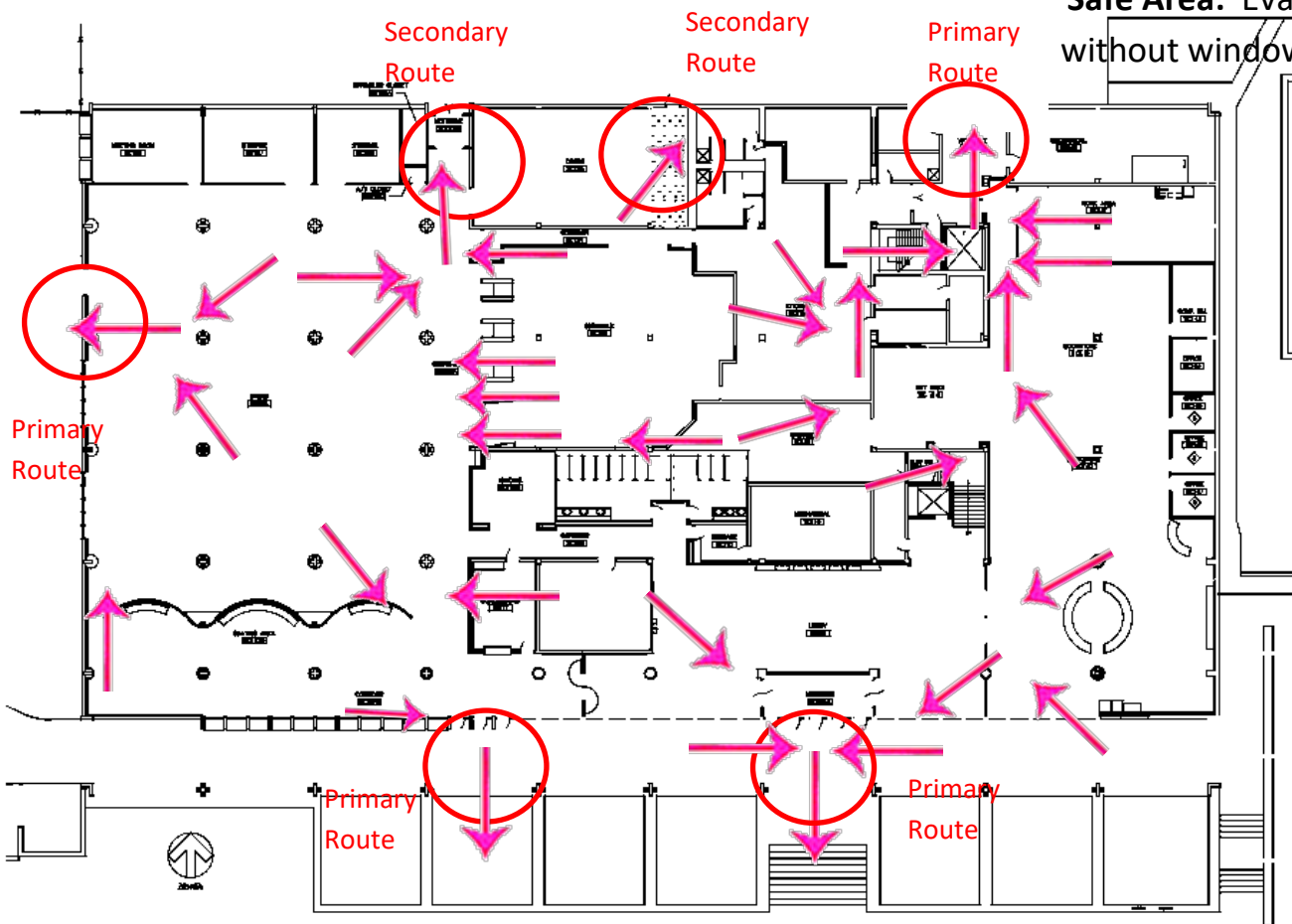
Safe Area: Evacuate to a restroom or room without windows.



Severe Weather and Evacuation Plan-Student Center 1st

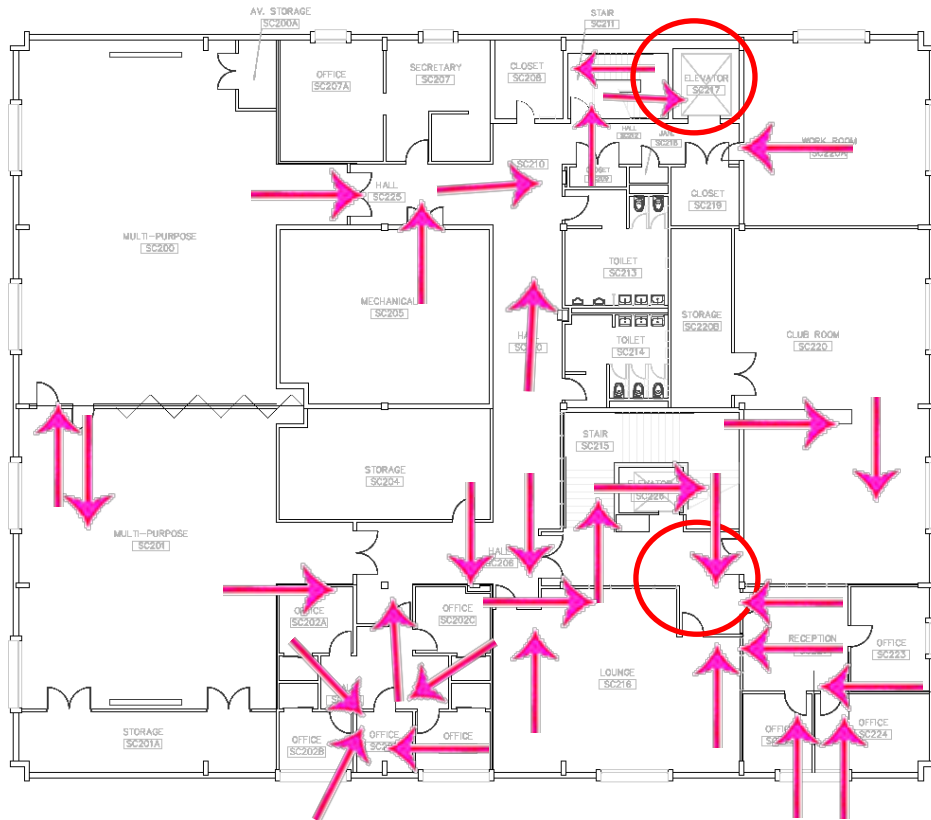
Evacuation: Evacuate through the nearest marked exit (Circled) using the routes (Arrows) as marked. **Emergency Assembly Point (EAPs):** Faculty & Staff P-Y.

Safe Area: Evacuate to a restroom or room without windows.



Severe Weather and Evacuation Plan-Student Center

2nd Floor



Evacuation: Evacuate down the stairs and through the nearest marked exit (Circled) on the first floor using the routes (Arrows) as marked.

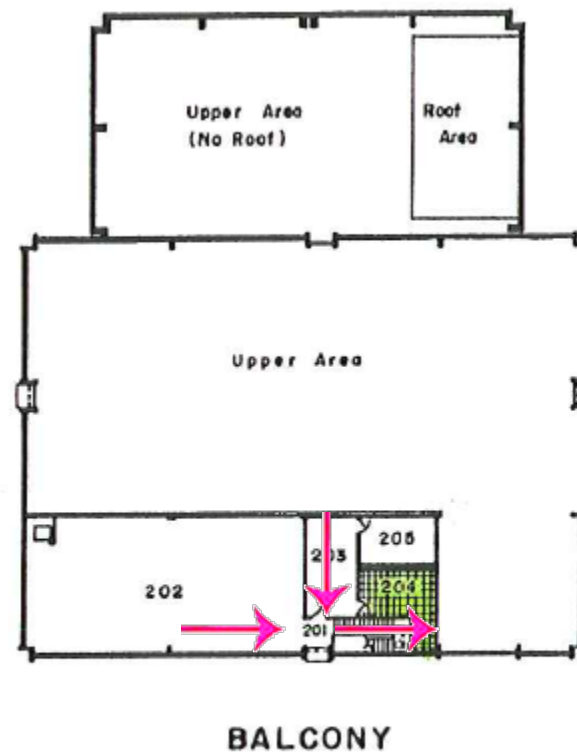
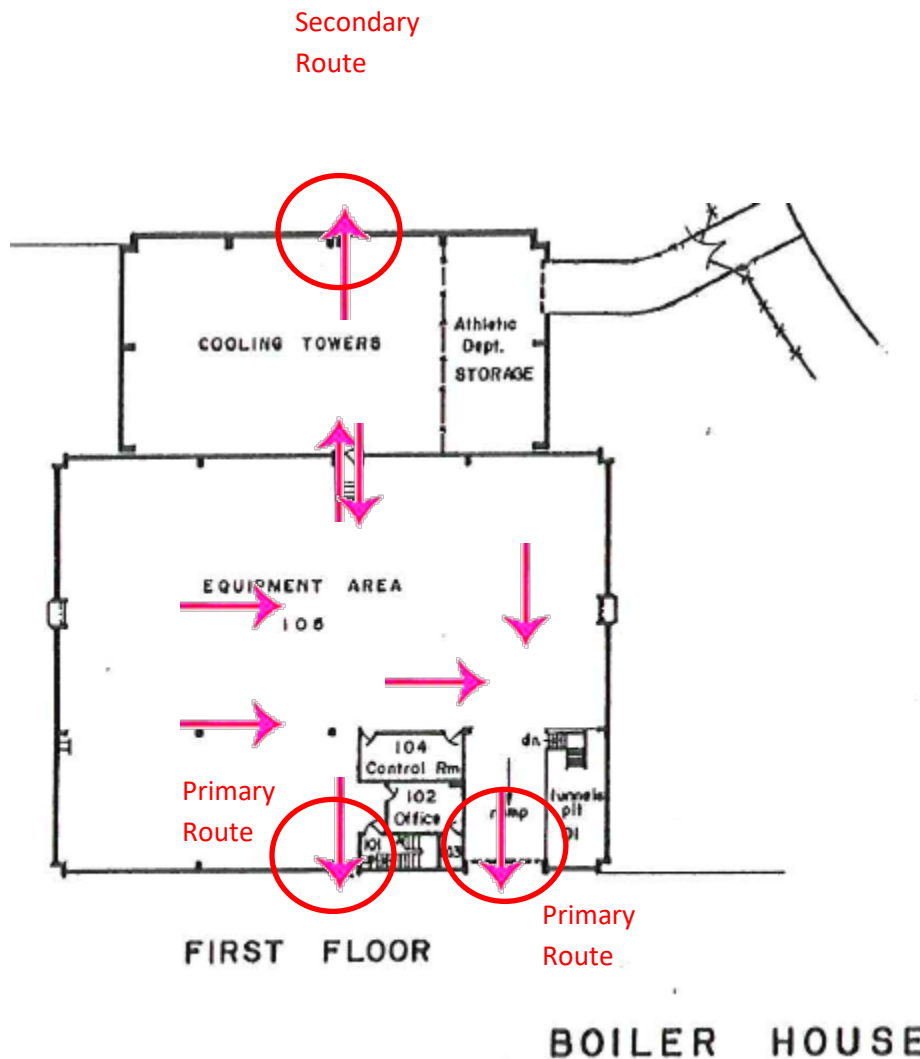
Emergency Assembly Point (EAPs): Faculty & Staff P-Y.

Safe Area: Evacuate to a restroom or room without windows.

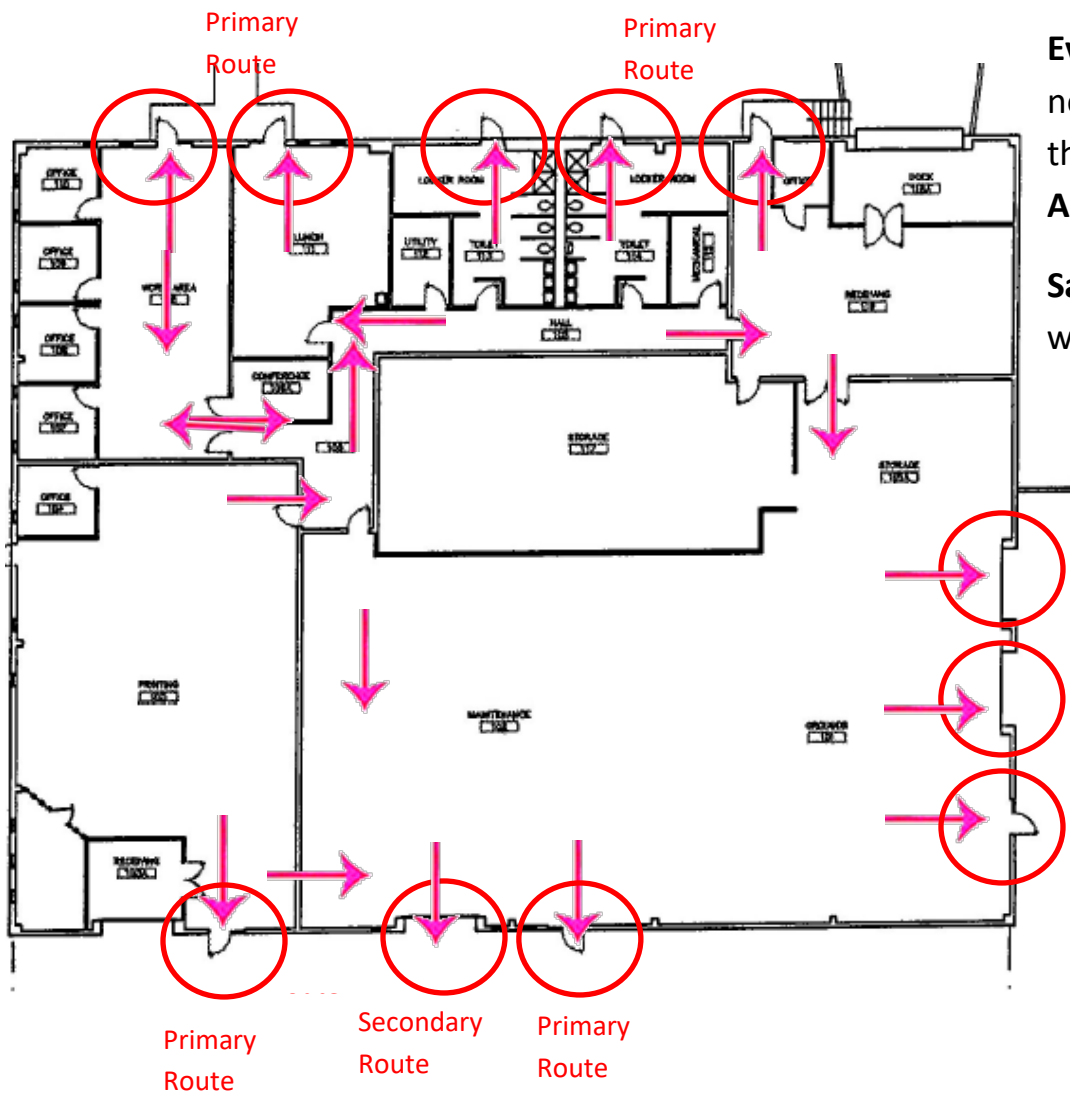
Severe Weather and Evacuation Plan-Physical Plant

Evacuation: Evacuate down the stairs (2nd floor only) and through the nearest marked exit (Circled) on the first floor using the routes (Arrows) as marked. **Emergency Assembly Point (EAPs):** Faculty & Staff P-Y.

Safe Area: Evacuate to a restroom, stairway, or room without windows.



Severe Weather and Evacuation Plan-Service Building



Evacuation: Evacuate through the nearest marked exit (Circled) on the first floor using the routes (Arrows) as marked. **Emergency Assembly Point (EAPs):** Faculty & Staff P-Y.

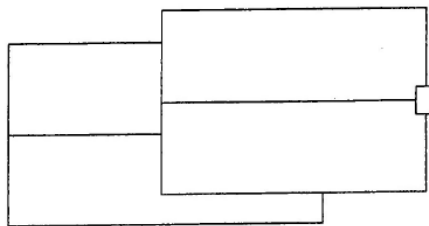
Safe Area: Evacuate to a restroom or room without windows.

Severe Weather and Evacuation Plan-Police Building

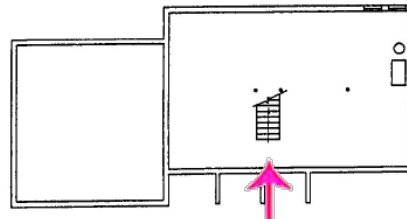
Evacuation: Evacuate through the nearest marked exit (Circled) on the first floor using the routes (Arrows) as marked. **Emergency Assembly Point (EAPs):** Faculty & Staff P-Y.

If in the basement ascend the stairs. If on the second floor descend the stairs.

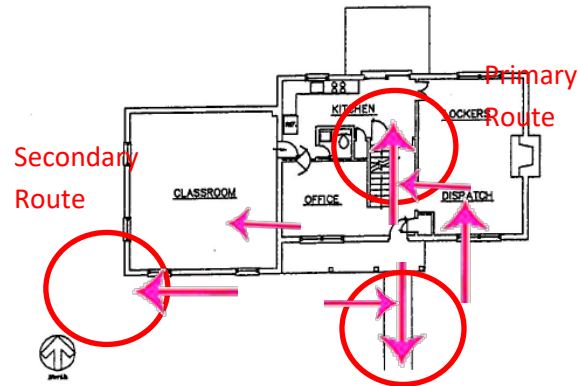
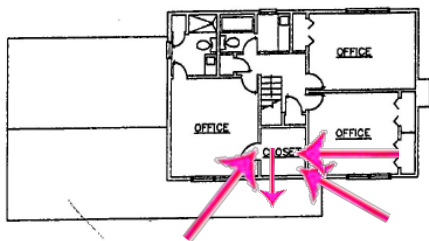
Safe Area: Evacuate to a restroom or room without windows.



ROOF PLAN

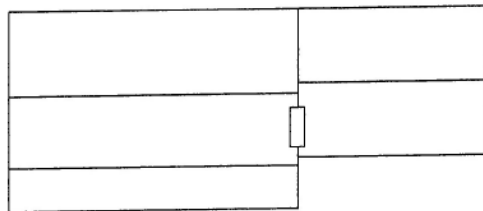


BASEMENT PLAN

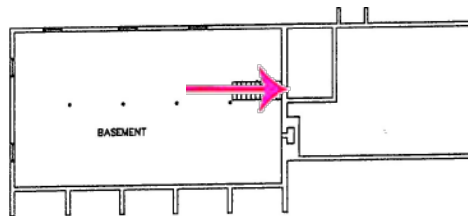


Primary
Route

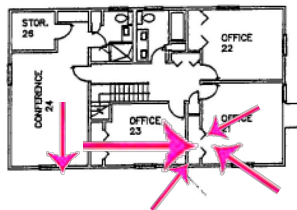
Severe Weather and Evacuation Plan-Continuing Education



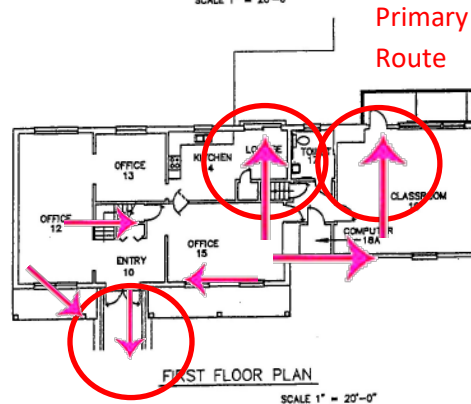
ROOF PLAN
SCALE 1" = 20'-0"



BASEMENT PLAN
SCALE 1" = 20'-0"



SECOND FLOOR PLAN
SCALE 1" = 20'-0"

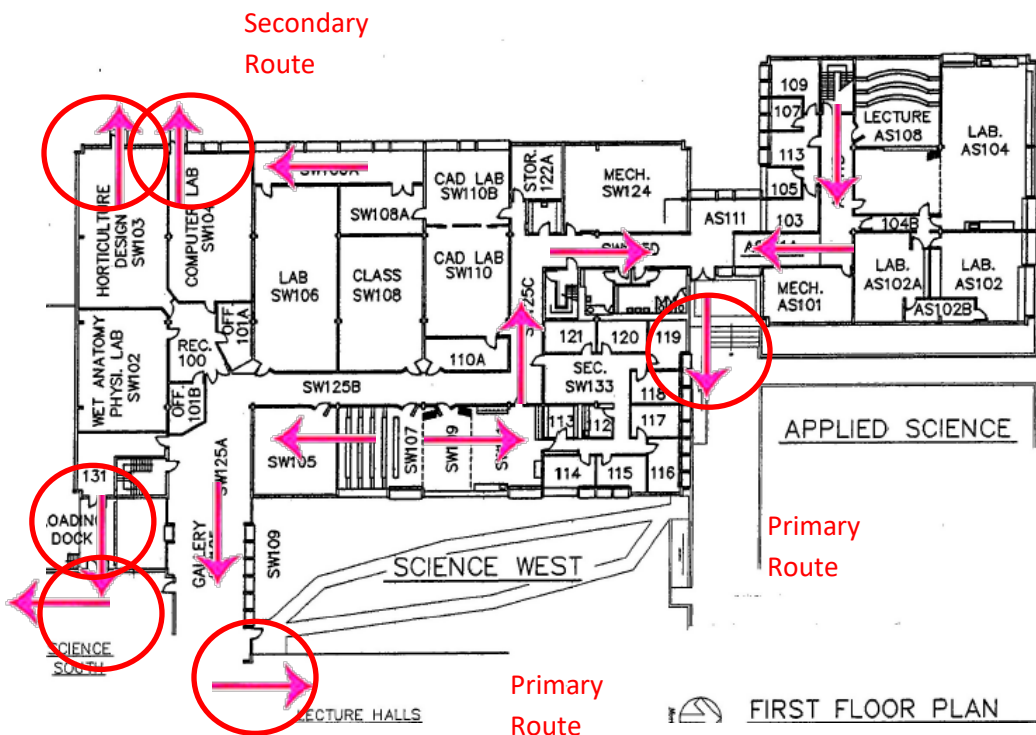


Primary
Route

Evacuation: Evacuate through the nearest marked exit (Circled) on the first floor using the routes (Arrows) as marked. **Emergency Assembly Point (EAPs):** Parking I. If in the basement ascend the stairs. If on the second floor descend the stairs.

Safe Area: Evacuate to a restroom or room without windows.

Severe Weather and Evacuation Plan-Applied Science and Science West 1st Floor



Secondary
Route

Evacuation: Evacuate through the nearest marked exit (Circled) on the first floor using the routes (Arrows) as marked. **Emergency Assembly Point (EAPs):** Parking I. If in the basement ascend the stairs. If on the second floor descend the stairs.

Safe Area: Evacuate to a restroom or room without windows.

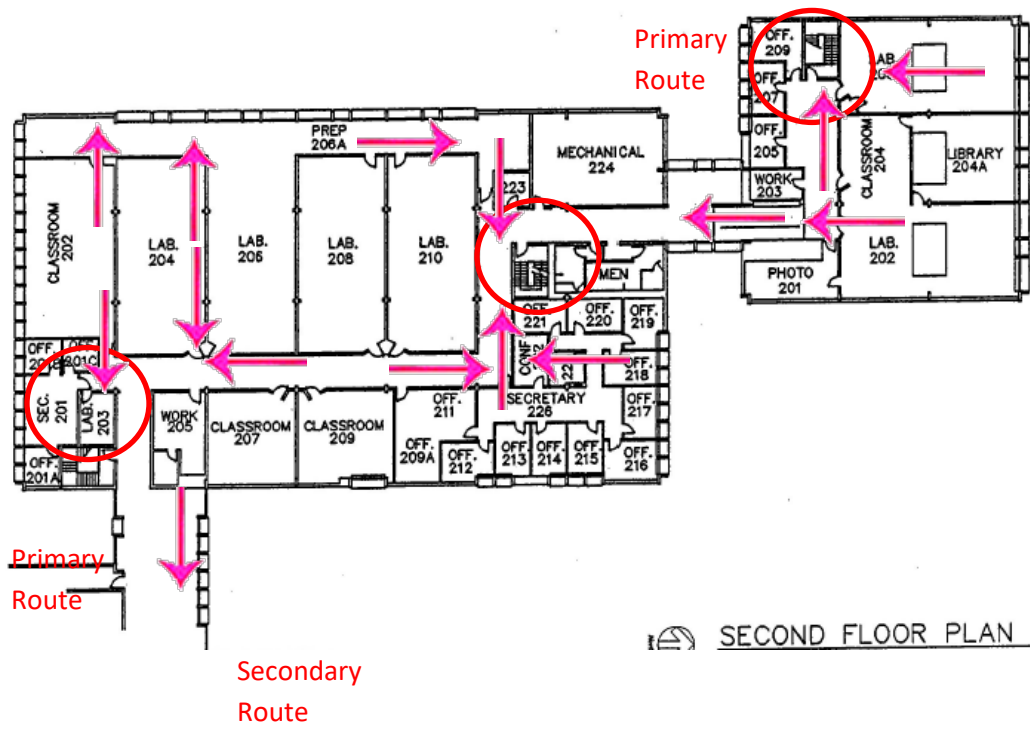
Primary
Route

Primary
Route

Secondary
Route

FIRST FLOOR PLAN

Severe Weather and Evacuation Plan-Applied Science and Science West 2nd Floor

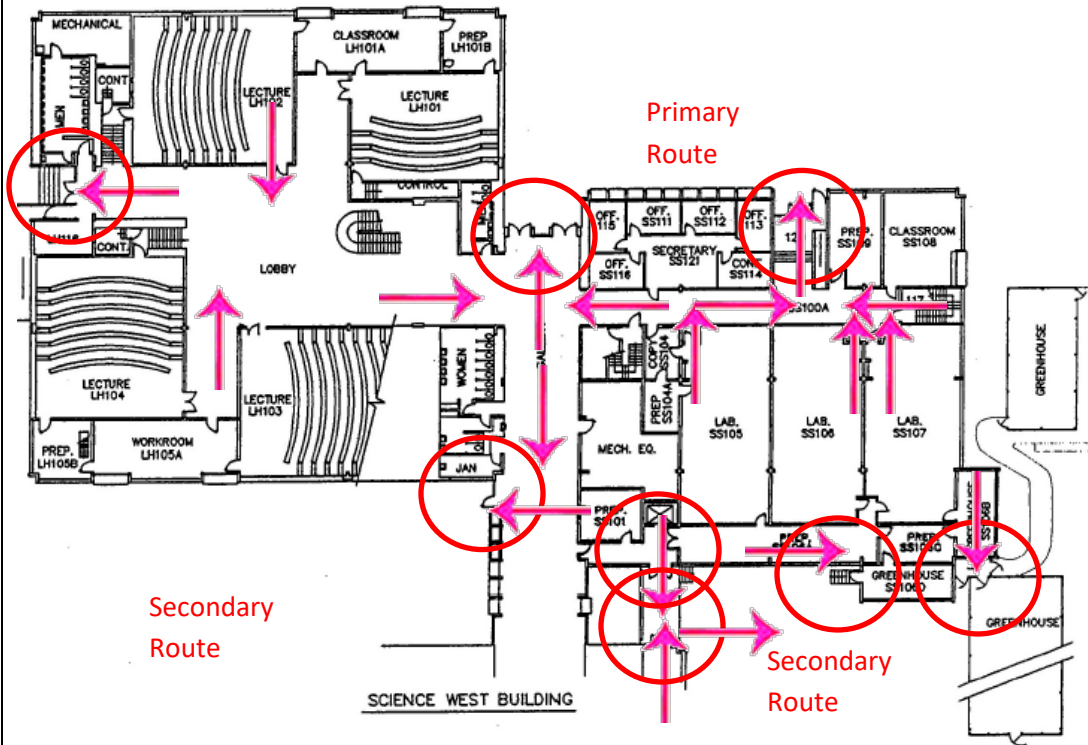


Evacuation: Evacuate through the nearest marked exit (Circled) on the first floor using the routes (Arrows) as marked. **Emergency Assembly Point (EAPs):** Parking I. If on the second floor descend the stairs.

Safe Area: Evacuate to a restroom or room without windows.

Severe Weather and Evacuation Plan-Science South and Lecture Halls 1st Floor

Primary Route



Secondary Route

Primary Route

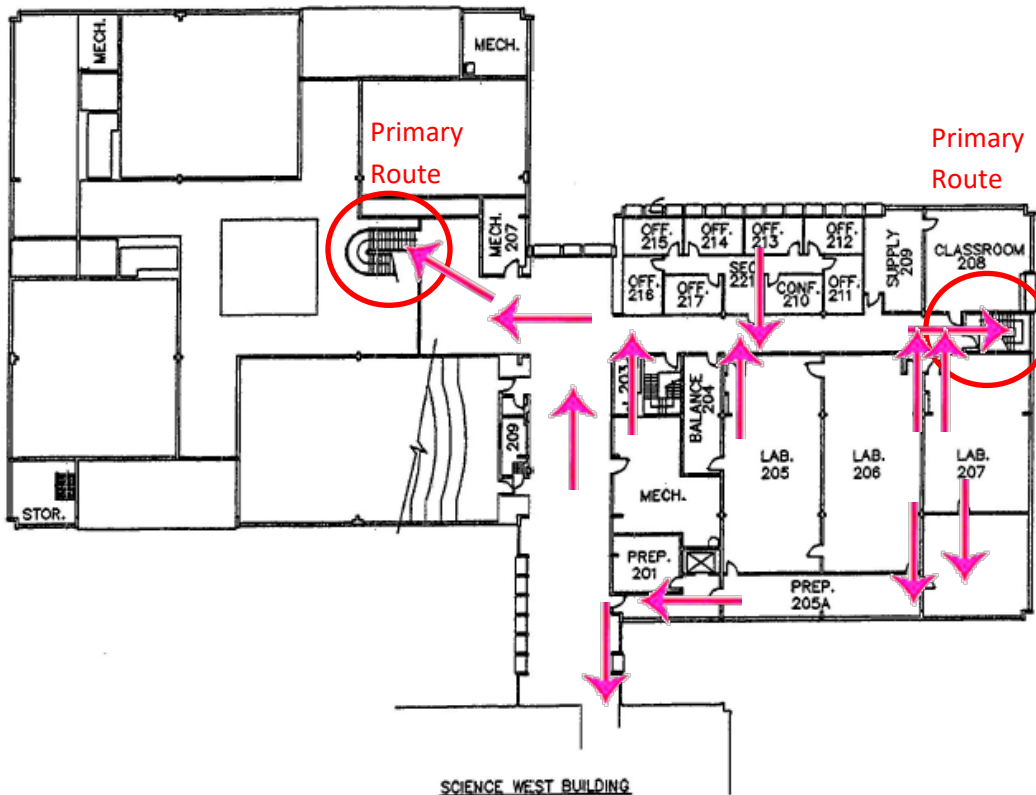
Secondary Route

FIRST FLOOR PLAN

Evacuation: Evacuate through the nearest marked exit (Circled) on the first floor using the routes (Arrows) as marked. **Emergency Assembly Point (EAPs):** Parking I. If on the second floor descend the stairs.

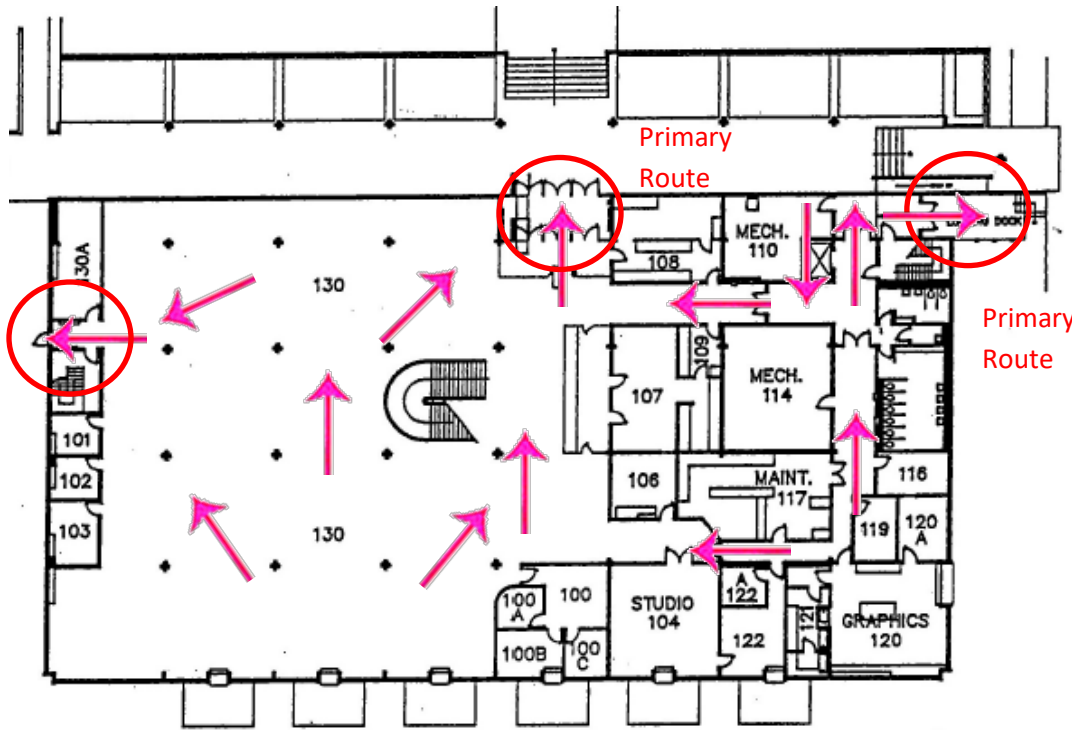
Safe Area: Evacuate to a restroom or room without windows.

Severe Weather and Evacuation Plan-Science South and Lecture Halls 2nd Floor



Evacuation: Evacuate through the nearest marked exit (Circled) on the first floor using the routes (Arrows) as marked. **Emergency Assembly Point (EAPs):** Parking I. If on the second floor descend the stairs. **Safe Area:** Evacuate to a restroom or room without windows.

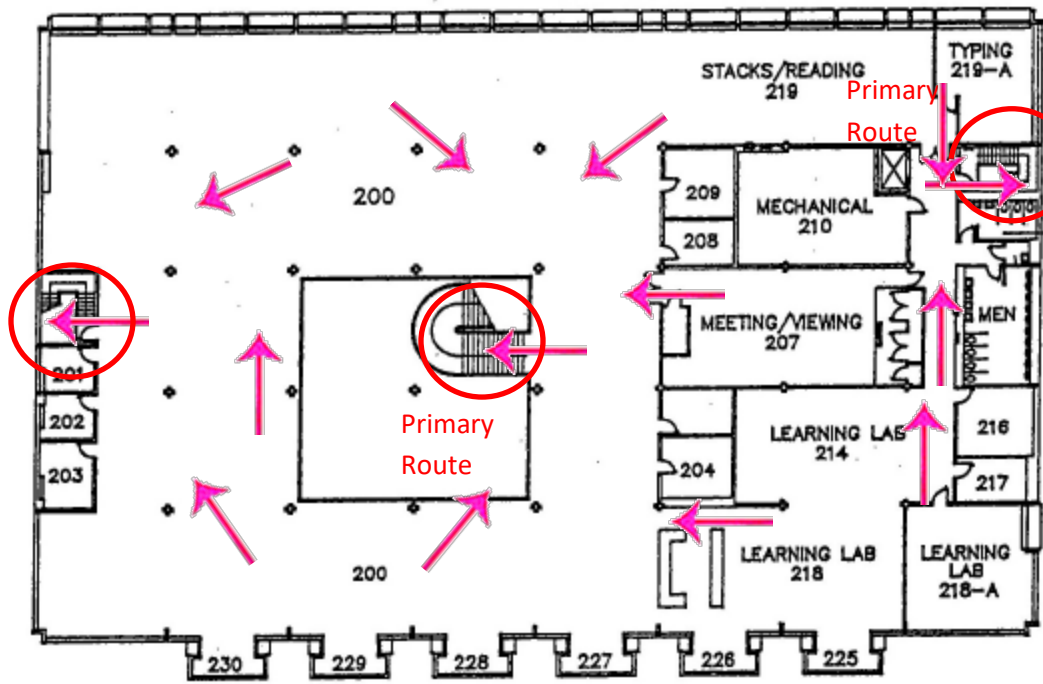
Severe Weather and Evacuation Plan-IRC (Library) 1st



Evacuation: Evacuate through the nearest marked exit (Circled) on the first floor using the routes (Arrows) as marked. **Emergency Assembly Point (EAPs):** Visitor Parking. If on the second floor descend the stairs.

Safe Area: Evacuate to a restroom or room without windows.

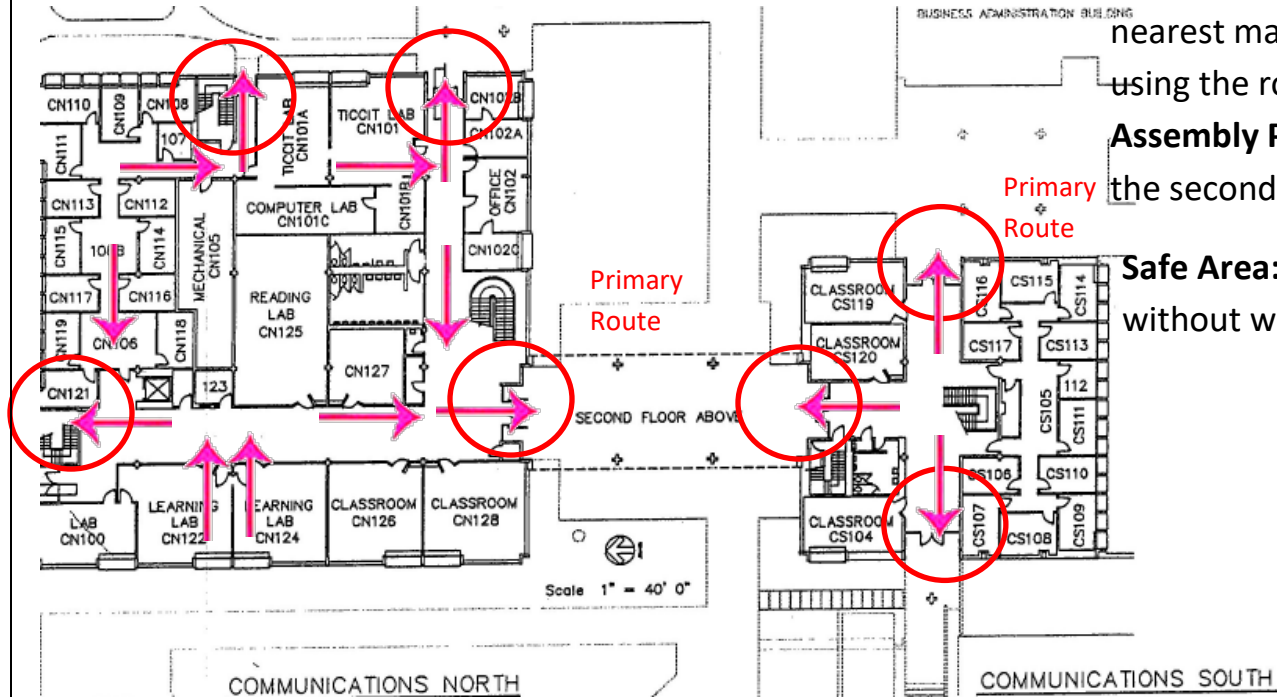
Severe Weather and Evacuation Plan-IRC (Library) 2nd



Evacuation: Evacuate through the nearest marked exit (Circled) on the first floor using the routes (Arrows) as marked. **Emergency Assembly Point (EAPs):** Visitor Parking. If on the second floor descend the stairs.

Safe Area: Evacuate to a restroom or room without windows.

Severe Weather and Evacuation Plan-Communications



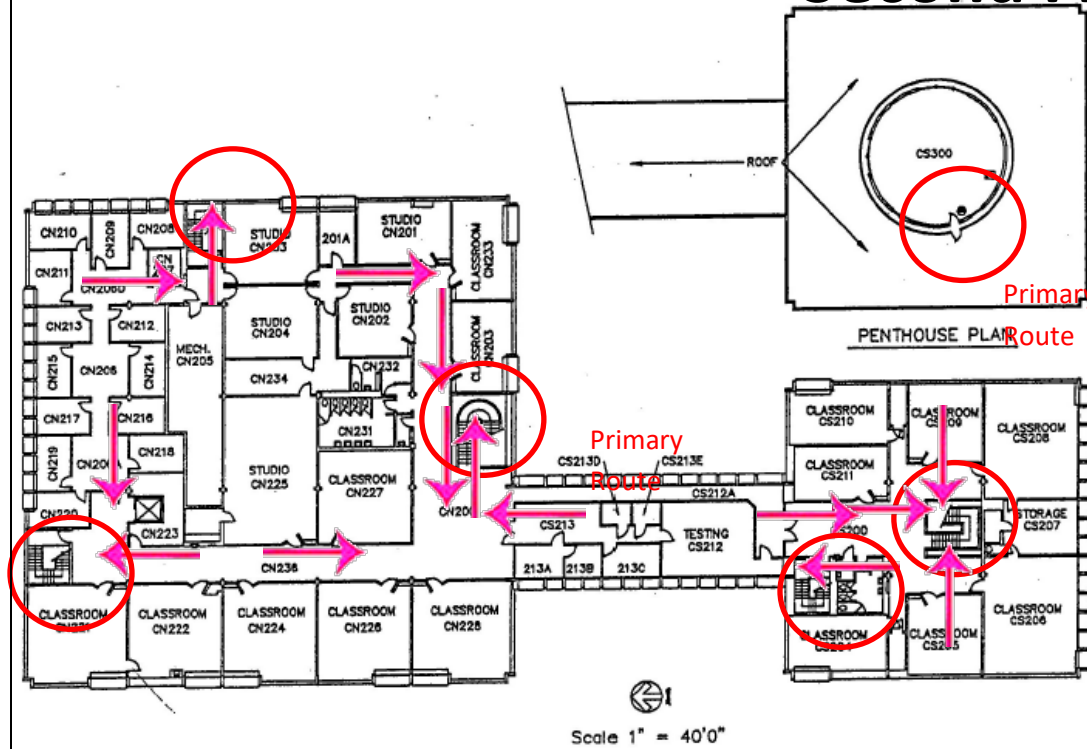
Evacuation: Evacuate through the nearest marked exit (Circled) on the first floor using the routes (Arrows) as marked. **Emergency**

Assembly Point (EAPs): Visitor Parking. If on the second floor descend the stairs.

Safe Area: Evacuate to a restroom or room without windows.

Severe Weather and Evacuation Plan-Communications

Second Floor



Evacuation: Evacuate down the stairs (Circled) to the first floor using the routes (Arrows) as marked. **Emergency Assembly Point (EAPs):** Visitor Parking. If in the penthouse evacuate down the ladder then follow the routes to the first floor.

Safe Area: Evacuate to a restroom or room without windows.

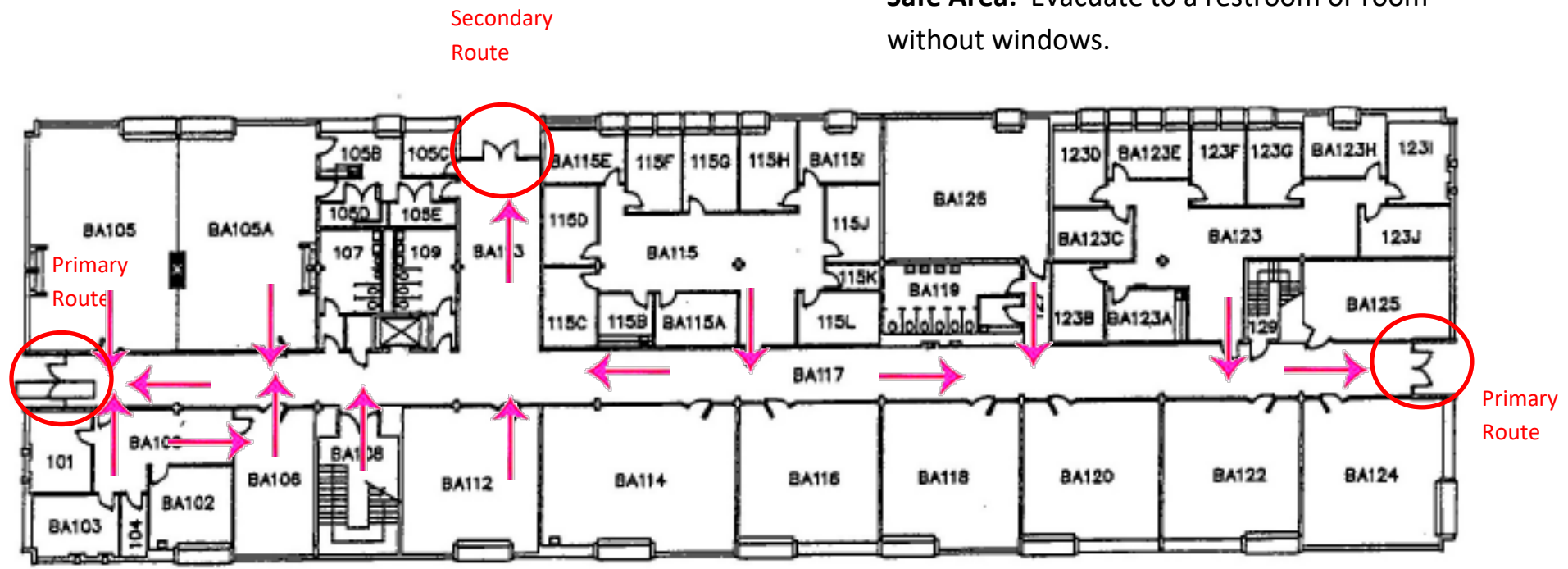
NORTH COMMUNICATIONS

SOUTH COMMUNICATIONS

Severe Weather and Evacuation Plan-BA 1st Floor

Evacuation: Evacuation: Evacuate down the stairs (Circled) to the first floor using the routes (Arrows) as marked. **Emergency Assembly Point (EAPs):** Visitor Parking. If in the penthouse evacuate down the ladder then follow the routes to the first floor.

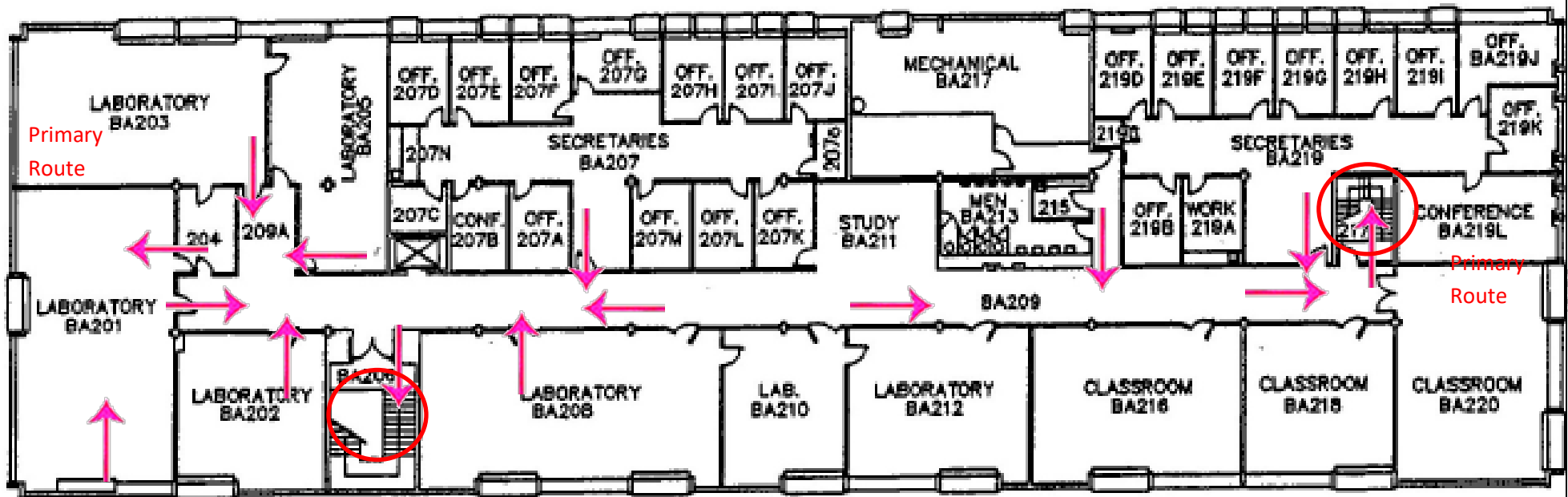
Safe Area: Evacuate to a restroom or room without windows.



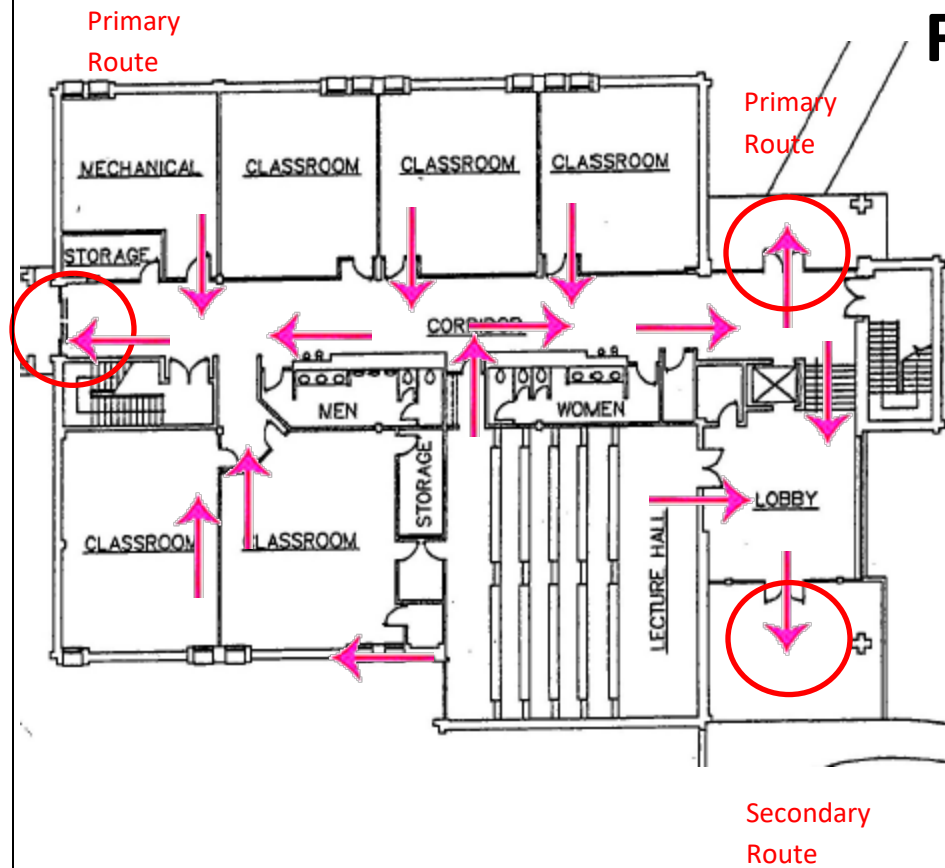
Severe Weather and Evacuation Plan-BA 2nd Floor

Evacuation: Evacuate down the stairs (Circled) using the routes (Arrows) as marked. **Emergency Assembly Point (EAPs):** Visitor Parking. If in the penthouse evacuate down the ladder then follow the routes to the first floor.

Safe Area: Evacuate to a restroom or room without windows.



Severe Weather and Evacuation Plan-Social Sciences 1st



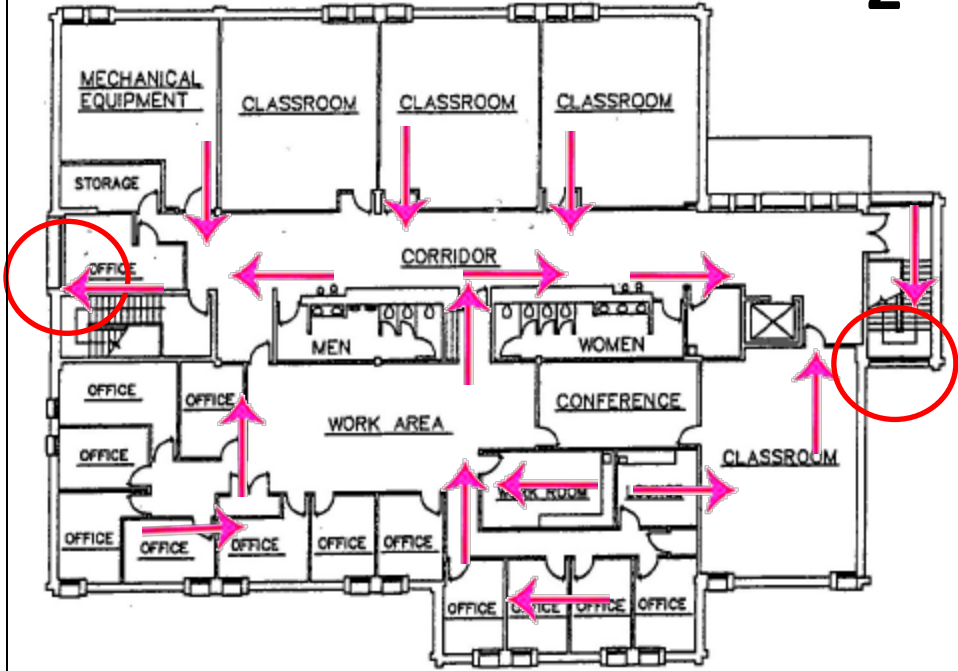
Floor

Evacuation: Evacuate through the doors (Circled) using the routes (Arrows) as marked. **Emergency Assembly Point (EAPs):** Visitor Parking.

Safe Area: Evacuate to a restroom or room without windows.

Severe Weather and Evacuation Plan-Social Sciences

2nd Floor



Evacuation: Evacuate down the stairs (Circled) using the routes (Arrows) as marked. **Emergency Assembly Point (EAPs):** Visitor Parking.

Safe Area: Evacuate to a restroom or room without windows.