

Remote Access Labs

How to remotely access physical computer labs at the campus

Instructions

Summary (If needed)

This document outlines how to connect to a workstation in a computer lab at the campuses using Remote Labs

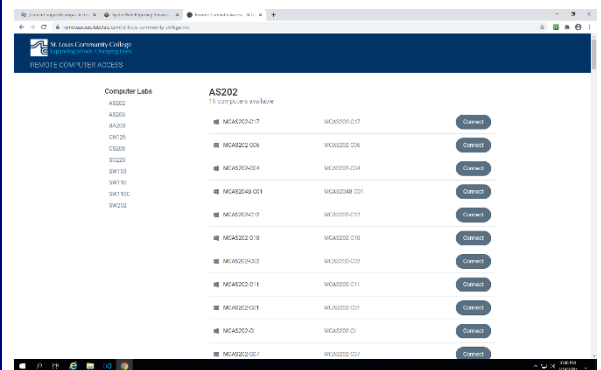
Prerequisites (If needed)

User will need to be connected to the Student VPN to access workstations via the Remote Labs Dashboard

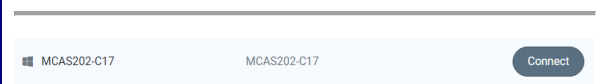
Step - by - Steps

- **Open Chrome** and go to the **campus landing page**, F1
 - For Forest Park, the link is <https://remoteaccess.labstats.com/st-louis-community-college-fp>
 - For the Meramec campus, the link is <https://remoteaccess.labstats.com/st-louis-community-college-mc>
 - Landing pages for Wildwood and Flo Valley are coming soon.
- **Click** a **lab** from the left hand side to view available workstations
- **Click Connect** next to the workstation you would like to connect to, F2
- **Click Download** in the connection screen, F3
- **Open RDP file** that was downloaded, F4
- **Click connect** through the **Remote Desktop Connection** Warning Screen, F5
- When the computer loads, **type** your **STLCC username** and **password** into the login screen

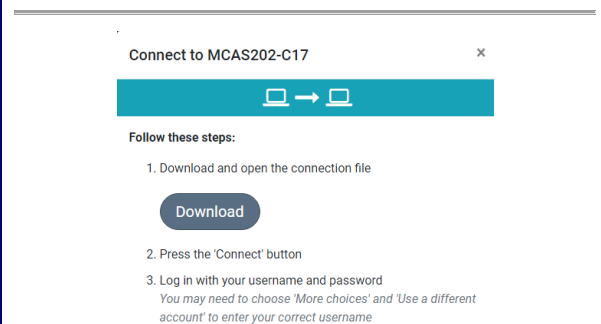
Screenshots



F1: Meramec Landing Page



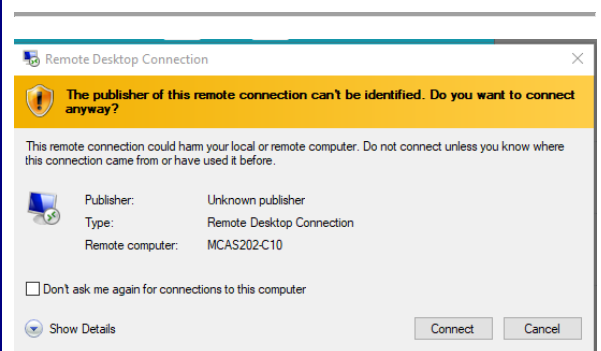
F2: Connect button for computer



F3: Connect to Workstation



F4: Open RDP file



F5: Remote Desktop Connection