

ST. LOUIS COMMUNITY COLLEGE NURSING PROGRAM HANDBOOK



EXPANDING MINDS • CHANGING LIVES

STLCC District Nursing Program website: www.stlcc.edu/nursing

Submit inquiries via email to stlcc-nursing@stlcc.edu

Revised January 2023



FLORISSANT VALLEY FOREST PARK MERAMEC WILDWOOD

St. Louis Community College Nursing Program Information

The STLCC Nursing Division and Degree Program is fully approved by the Missouri State Board of Nursing

www.pr.mo.gov/nursing.asp

The STLCC Nursing Division and Degree Program is accredited by the Accreditation Commission for Education in Nursing, Inc. (ACEN)

3343 Peachtree Road NE, Suite 1400

Atlanta, GA 30326

Phone: 404-975-5000; Fax: 404-975-5020

www.acenursing.org

STLCC is accredited by the Higher Learning Commission of the North Central Association of Colleges and Schools and approved by the Missouri Department of Higher Education.

Agency member of:

Missouri League for Nursing (MLN)

National League for Nursing (NLN)

Missouri Organization of Associate Degree Nursing (MO-OADN)

The Organization for Associate Degree Nursing (OADN)

Address admission inquiries to STLCC Nursing Program staff:

Email: stlcc-nursing@stlcc.edu

Phone: 314-644-9358

NOTE: Each student is responsible for compliance with the information in this handbook. Nursing program policies and procedures described herein are subject to change. Students are responsible for reviewing handbook revisions while in the program. Diversity and Inclusion, Non-Discrimination Statement, Disability Resources and Access Office Information, and NCLEX Testing Accommodation Information are located on the last page of this handbook.

Table of Contents

Program Information	5
Introduction	5
St. Louis Community College Mission, Vision, and Values	6
St. Louis Community College Strategic Plan Themes, Goals, and Projects	6
Nursing Philosophy	7
Nursing Education	7
Health	7
Recipient of Nursing	7
Nursing Program Values	7
Expected Graduate Competencies: End of Program Student Learning Outcomes (EPSLOs)	8
Nursing Curriculum (per Current College Catalog)	9
Program of Study	9
Course Descriptions	10
Methods of Instruction	12
Course Workload	12
Nursing Course Credit Hour and Clock Hour Requirements	13
Learning Resources	14
Instructional Resources	14
Nursing Skills Laboratory / Simulation Facilities	14
Progression and Retention	14
Admission Requirements	14
Evaluation / Grading	15
ATI Policy	16
Attendance Policies	18
Classroom Attendance	18
Clinical Attendance	18
St. Louis Community College Nursing Program Clinical Sites (Current)	19
Program Retention / Course Withdrawal	20
Readmission Policies	20
General Readmission Information:	20
Semester Specific Readmission Requirements:	20
Program Readmission	21
Transfer Procedure and Challenge Process	21
Internal Campus Transfers	21
External Transfers	21
Challenge Process	21
Placement Policy Regarding LPN Bridge completion, Successful Student Transfers, and Unsuccessful Student Readmission / Transfers	22
District Readmission Committee for Nursing, OTA, and PTA	22
Retention Policies	22
Graduation Requirements	23

Post-Graduation Licensure (Registered Nurse)	23
Health and Safety	23
STLCC Technical Standards Statement	23
Nursing Program Technical Standards	24
Health Policy	25
Infection Control / Standard Precaution Guidelines	25
Missouri State Board of Nursing Position Statement regarding HIV or HBV Infection	26
Exposure Guidelines	26
Latex Information and Policy	26
Substance Abuse Policy	27
Use of Human Subjects in Training and Associated Health Risks	27
Professional Conduct	28
Nursing Student Code of Conduct	28
Professional Appearance / Dress Code	29
Nursing Uniform Dress Code and Standards for Clinical Experiences:	29
Classroom Recording Policy (Updated 5.2013)	30
Student Services and College Policies	32
Access Office	32
Student Rights and Responsibilities	32
Non-Academic Appeals	33
Student Academic Rights and Responsibilities	33
Student Academic Rights	33
Student Academic Responsibilities	33
Academic Appeals	33
STLCC Nursing Program Faculty and Staff	34
Division-Wide Team	35
Florissant Valley	36
Forest Park	38
Meramec	40
Wildwood	42
Appendix A	43
Financial Information	43
Appendix B	45
Handbook Acknowledgement	45
Latex Waiver Form	46
Latex Waiver Form	46
Appendix C	47
Diversity, Inclusion, and Non-Discrimination Statement	47

Program Information

Introduction

St. Louis Community College, with campuses at Florissant Valley, Forest Park, Meramec, and Wildwood, offers an Associate of Applied Science in Nursing degree program. This sixty-nine (69) credit-hour program can be completed in two-years after programmatic admission. Upon completion of the degree program, the graduate is eligible to apply for licensure as a Registered Professional Nurse (RN) by the National Council Licensure Examination for Registered Nurses (NCLEX-RN). The Nursing Program became a district-wide initiative in 2017. Each campus established their respective program beginning with Meramec (1963), Forest Park (1965), Florissant Valley (1970), and Wildwood (2020). The first Nursing classes graduated from Meramec in 1965, Forest Park in 1967, Florissant Valley in 1972, and Wildwood in 2022. Each campus is unique however, St. Louis Community College's Nursing Degree Program has maintained compliance with the Missouri State Board of Nursing since 1963.

Full accreditation by the National League for Nursing (NLN) was granted at: Meramec (AY1966/67), Forest Park (AY1968/69), Florissant Valley (AY1977/78), and as a district-wide entity in 2020. In 1996, the NLN approved the establishment of an independent entity within the NLN to be known as the National League for Nursing Accrediting Commission (NLNAC). Effective May 6, 2013, the NLNAC became the Accreditation Commission for Education in Nursing (ACEN).

St. Louis Community College maintains regional accreditation with the North Central Association of Colleges and Schools and the Missouri Department of Education.

Instruction within nursing courses includes theory, laboratory skills, and clinical experiences. Clinical experiences are performed at cooperating health care agencies (the list of partnered clinical sites can be found on page XX). Instructional delivery methods may include primarily face-to-face classroom activities with occasional hybrid, live-virtual lecture, and online items.

Students must be prepared for any, and all, classes to be moved to an online format in response to changes in the Coronavirus status, or any other College/National emergency.

St. Louis Community College Mission, Vision, and Values

Mission: Empowering students. Expanding minds. Changing lives.

Vision: St. Louis Community College will be a national leader and model institution for inclusive and transformative education that strengthens the communities we serve through the success of our students.

Values: *Students first* – everything we do supports student success and removes barriers. *Respect for All* – we promote equitable treatment and respectful discourse in all interactions with students, each other, and the community. *Integrity* – we act with honesty, trustworthiness, and ethical behavior. *Collaboration* – working collectively, we achieve more than working individually or within separate groups. *Data Informed* – we make decisions in the best interest of student and the institution based on reliable data.

St. Louis Community College Strategic Plan Themes, Goals, and Projects

Strategic Initiative 1 – PREMIER STUDENT EXPERIENCE

Goal A. Provide academic experiences designed to prepare students for success in their chosen field of study.

Goal B. Provide students with outstanding student support services.

Goal C. Remove barriers to equitable student access and success.

Strategic Initiative 2 – COMMUNITY PARTNERSHIPS

Goal A. Attract and work with diverse external partners to address the needs of the communities we serve.

Goal B. Effectively promote student, employer, and community successes.

Goal C. Offer excellent lifelong learning, worker training, and pre-employment training opportunities.

Strategic Initiative 3 – EQUITY, DIVERSITY, AND INCLUSION

Goal A. Create an environment that allows for diverse opinions and perspectives.

Goal B. Increase equity in student success.

Goal C. Recruit and retain employees at all levels who better reflect the diversity of the greater St. Louis region.

Goal D. Continue to develop an atmosphere of diversity, civility, and respect.

Strategic Initiative 4 – RESOURCE DEVELOPMENT

Goal A. Ensure organizational excellence using fiscal responsibility and data.

Goal B. Continue to cultivate relationships with external partners and officials.

Goal C. Maximize effective use of technology to provide supportive systems for students and employees.

Goal D. Develop a long-term facilities plan to strategically meet the future needs of the market and community.

Nursing Philosophy

The Nursing faculty believe that the nursing profession is both the art and science of caring for others. Nursing assists diverse populations in the promotion and maintenance of optimal health across the human lifespan. Utilizing evidence-based practice and critical thinking, professional nurses plan, implement, and evaluate patient centered care.

Nursing Education

Nursing education assists the student to think critically, problem solve creatively, and practice from a caring perspective. Education in nursing uses evidence-based practice and knowledge from applied science in the development of teaching and learning strategies. Additionally, education is influenced by changes in the demographics of society, the healthcare delivery system, and advances in technology.

As role models of critical thinking, nursing faculty create an educational environment which expands minds and empowers students to become independent life-long learners. Faculty facilitate educational opportunities that meet diverse individual student needs and promote career professionalism.

Health

Health is an ever-changing state determined by the individual's ability to adapt within an environment and achieve maximum function along the continuum of life.

Recipient of Nursing

Nursing impacts patients, families, communities, and society.

Nursing Program Values

We are a learner-centered institution that values learning as a lifelong pursuit.

Students: *We value student success and provide opportunities for students to gain the knowledge and skills necessary to be successful.*

Diversity and Inclusion: *We recognize the strength in different views and values and promote diversity in our students and employees.*

Affordable and Accessible: *We embrace our obligation to provide affordable and accessible learning opportunities.*

Creativity and Innovation: *We believe that a creative and innovative environment strengthens our effectiveness and flexibility in meeting the challenges of ever-changing internal and external environments.*

Excellence: *We value academic and professional excellence in our employees and students and hold ourselves accountable as an institution for continuous improvement efforts and for achieving goals.*

Collaboration and Teamwork: *We believe that our mutual goals are best accomplished through collaboration and teamwork and that we, as individuals, must have the respect and support of others to succeed.*

Honesty and Integrity: *We value academic, professional, and personal honesty and integrity in individual employees, students, and as an institution.*

Community: *We recognize our responsibility to prepare our students to be productive citizens and value our services as important contributions to improving our local and regional communities.*

Communication: *We value communication as a means of encouraging dialogue, facilitating the open exchange of diverse viewpoints, sharing information, and building community to foster the interaction that enables us to reach our goals.*

Expected Graduate Competencies: End of Program Student Learning Outcomes (EPSLOs)

At the completion of the AAS Nursing Degree Program at St. Louis Community College, students are expected to:

1. Demonstrate the standards of professional practice as identified by the American Nurses Association Code of Ethics.
2. Demonstrate effective verbal, non-verbal, and written communication with individuals, families, groups, and communities across the lifespan.
3. Implement strategies to promote teaching and learning across the lifespan that facilitates health promotion and maintenance, and reduction of risks specific to individuals, families, and communities.
4. Implement safe critical decision-making skills using evidence-based practice and the nursing process to deliver safe nursing care for patients, families, groups, and communities across the lifespan.
5. Deliver patient-centered care across the lifespan through collaboration with health care team members by demonstrating leadership skills in the clinical setting.

Nursing Curriculum (per Current College Catalog)

The courses listed in the Program of Study are **required** to complete the nursing degree program curriculum.

Program of Study

Course Title	Course Number	Credit Hours
College Composition	ENG:101	3
Communication Between Cultures OR	COM:200	3
Introduction to Sociology	SOC:101	
Math Proficiency	MTH:140S	0-3 (Depending on how meeting requirement)
Chemistry OR	CHM:101	5
Introductory Biology	BIO:111	
Anatomy & Physiology I	BIO:207	4
General Psychology	PSY:200	3
Total		13-25 (Depending on how meeting requirement)

The following five courses must be completed **prior** to enrolling in NUR:151 Fundamentals of Nursing

Program Specific Curriculum:

Course Title	Course Number	Credit Hours
FIRST SEMESTER		
Fundamentals of Nursing	NUR:151	7
Nursing Laboratory Practicum I	NUR:152	1
Human Growth & Development	PSY:205	3
Anatomy & Physiology II	BIO:208	4
SECOND SEMESTER		
Nursing of Adults and Children I	NUR:153	9
Nursing Laboratory Practicum II	NUR:154	1
General Microbiology	BIO:203	4
THIRD SEMESTER		
Nursing of Adults and Children II	NUR:251	10
FOURTH SEMESTER		
Nursing of Adults and Children III	NUR:252	8
Management Skills in Nursing	NUR:253	3
Missouri Civics Requirement	XXX:XXX	3
Program Total		53

Total credit hours required for the Nursing Program range from **66-78** depending on how requirements are met.

All nursing courses **must** be taken in the correct semester order of the program of study. Non-nursing courses listed within the program of study must be completed prior to the following semester (ex: BIO 208 and PSY 205 **must** be completed prior to the second semester of the program).

The State of Missouri requires a Civics course for degree conferral. Please see a Student Success Advisor and the STLCC course Catalog for a list of 3-credit hour courses which meet the Missouri Civics requirement.

Course Descriptions

NUR:151 FUNDAMENTALS OF NURSING _____ **7 CREDITS**

This course is an introduction to the role of the nurse in meeting needs common to all patients through knowledge, skill, and attitudes essential for the practice of nursing, based on principles of physical, biological, and behavioral sciences, and nursing theory (*Equivalent of 5 lecture hours per week, 6 hours of clinical lab per week for a total of 90 clinical lab clock hours for the semester*).

Course Prerequisites: Enrollment in nursing program, PSY:200, ENG:101, COM:200, BIO:207, all with a grade of "C" or better, Math proficiency at or above the Math 140 level, and Reading proficiency.

Co-requisites: NUR:152

NUR:152 NURSING LABORATORY PRACTICUM I _____ **1 CREDIT**

This course is designed to provide the student with the practice of nursing skills in the college nursing laboratory and to reinforce principles introduced in Fundamentals of Nursing (*Equivalent of 2 practicum lab hours per week*).

Course Prerequisite: Enrollment in the nursing program.

Co-requisite: NUR:151.

NUR:153 NURSING OF ADULTS & CHILDREN I _____ **9 CREDITS**

This course is designed to assist the student to acquire knowledge and skills in meeting the needs of adults and children with an emphasis on adaptation to illness and hospitalization in medical- surgical nursing, and mothers and newborns during the maternity cycle (*Equivalent of 6 lecture hours per week, 9 clinical lab hours per week for a total of 135 clinical lab clock hours for the semester*).

Course Prerequisites: NUR:151, BIO:208, PSY:205, all with a minimum grade of "C" or higher.

Co-requisite: NUR:154.

NUR:154 NURSING LABORATORY PRACTICUM II _____ **1 CREDIT**

This course is designed to provide the student with the practice of nursing skills in the college nursing laboratory and to reinforce nursing principles introduced in NUR:153 (*Equivalent of 2 practicum lab hours per week*).

Course Prerequisite: NUR:151 and NUR:152, both with a minimum grade of "C" or higher.

Co-requisite: NUR:153.

NUR:160 LPN to RN BRIDGE _____ **7 CREDITS**

This course is required to prepare the Licensed Practical Nurse (LPN) to enter the Associate Degree in Nursing Program. Emphasis is on assessing, reinforcing, and expanding competencies. Classroom content focuses on role change, communication, critical thinking, the nursing process, pharmacology, and nutrition. Additional classroom content focuses on the needs of adults and children with an emphasis on health promotion, adaptation to illness and hospitalization in medical-surgical nursing, and mothers and newborns during the maternity cycle. Includes a college and clinical laboratory component.

Course Prerequisites: Current Practical Nurse license with recent clinical or education experience; enrollment in nursing program including ENG:101, PSY:200, PSY:205, COM:200, BIO:207, and BIO:208, all with a minimum grade of "C" or higher.

NUR:161 LPN EXPERIENTIAL CREDIT I _____ **11 CREDITS**

This **no-fee, non-registration** course is designed to transcript LPN experiential credit for first and second semester nursing. A non-LPN Bridge student admitted to the Nursing Program completes 18 credit hours of Nursing courses in the first and second semesters. An LPN Bridge student completes 7 credit hours of Nursing, 11 hours less than the non-LPN Bridge student. The 11 hours of LPN Experiential Credit equalizes the Nursing credit hour requirement between the non-LPN Bridge student and the LPN Bridge student.

Course Prerequisites: Enrollment in LPN bridge program and successful completion of NUR:160 with a minimum grade of "C" or higher.

NUR:251 NURSING OF ADULTS & CHILDREN II 10 CREDITS

This course is designed to assist the student to further develop knowledge and skills necessary to meet the needs of adults and children with selected medical-surgical problems and behavioral health problems (*Equivalent of 6 lecture hours per week, 12 clinical lab hours per week for a total of 180 clinical lab clock hours for the semester*).

Course Prerequisites: NUR:153 or NUR:160 with a minimum grade of "C" or better; BIO:203 with a minimum grade of "C" or higher.

NUR:252 NURSING OF ADULTS & CHILDREN III 8 CREDITS

This course is designed to assist the student to further develop knowledge and skills necessary to meet the needs of adults and children with selected medical-surgical problems (*Equivalent of 5 hours lecture per week, 9 clinical lab hours per week for a total of 135 clinical lab clock hours for the semester*).

Course Prerequisite: NUR:251 with a minimum grade of "C" or higher.

Co-requisite: NUR:253

NUR:253 MANAGEMENT SKILLS IN NURSING 3 CREDITS

This course includes theory and practicum in principles managing the care of a group of patients. The student will participate actively in the role of a beginning staff nurse under the guidance of agency staff and instructor. (*Equivalent of 1 hour lecture per week, 6 clinical lab hours per week for a total of 90 clinical lab clock hours for the semester*).

Course Prerequisite: NUR:251 with a minimum grade of "C" or higher.

Co-requisite: NUR:252.

NUR:513 NURSING REINFORCEMENT 1 CREDIT

The special problems course Nursing Reinforcement is a repeat of the semester prior to where the student has experienced academic failure and/or withdrawal. The student is to attend existing classes, take tests, and successfully complete lab practicum checkouts, as required for non-audit content. The student will not attend the clinical component. The course evaluation will be pass/fail based on the criteria for the course evaluation (76% to pass). The course is designed to prepare nursing students for reentry into the nursing program.

Prerequisite: Approval of Nursing Department Coordinator.

Methods of Instruction

A variety of teaching and learning methods are used in nursing courses and may include readings, lecture-discussion, demonstrations, audiovisual media, study guides, written assignments, nursing care plans, concept maps, small group work, case studies, computer assisted programs, simulations, practice of nursing skills in the nursing skills laboratories, and providing care to patients in clinical environments.

Instructional delivery methods may include face-to-face, hybrid, live virtual lecture, and online.

Students must be prepared for any, and all classes to be moved to an online format in response to changes in the Coronavirus status or any other national or general state of emergency.

Course Workload

Science courses, Nursing Practicum I, and Nursing Practicum II include a college laboratory experience with a 2:1 clock hour-to-credit hour ratio (e.g. one credit hour earned requires two clock hours of laboratory per week each semester). Nursing courses include a clinical laboratory experience with a 3:1 clock hour-to-credit hour ratio (e.g. each credit hour earned requires three clock hours of laboratory per week each semester).

In addition to the class and clinical hours published in the colleges schedule of classes, nursing students can anticipate additional practice hours and individually arranged evaluation sessions in the nursing laboratory or via other delivery methods.

During each semester, additional time will be required for clinical preparation. Students may be required to visit the clinical site the day prior to the clinical experience to obtain material from the site's records to assist in planning patient care as well as meeting the outcomes of each course.

Due to the demands of the nursing program, it is highly recommended that a nursing student not be employed more than sixteen (16) hours per week.

Nursing Course Credit Hour and Clock Hour Requirements

Semester of Initial Course Offering	Course Name	Course Number	Course Credit Hours	Lecture Credit Hours	Clinical/ Practicum Credit Hours	Clinical/Practicum clock hours per week ** clinical hours are calculated by a 3:1 ratio of clock hours to credit hours ** practicum hours are calculated by a 2:1 ratio of clock hours to credit hours
Fall 2014	Fundamentals of Nursing	NUR:151	7	5	2	3 x 2 = 6 clock hours for clinical/lab (6 clock hours x 15 weeks = 90 clinical/lab clock hours for the semester)
Fall 2014	Nursing Laboratory Practicum I	NUR:152	1	0	1	2 x 1 = 2 hours for practicum (2 hours x 15 weeks = 30 hours for the semester)
Spring 2015	Nursing of Adults & Children I	NUR:153	9	6	3	3 x 3 = 9 clock hours for clinical/lab (9 clock hours x 15 weeks = 135 clinical/lab clock hours for the semester)
Spring 2015	Nursing Laboratory Practicum II	NUR:154	1	0	1	2 x 1 = 2 hours for practicum (2 hours x 15 weeks = 30 hours for the semester)
Spring 2015	LPN to RN Bridge	NUR:160	7*	6 *	1 *	3 x 1 = 3 clock hours for clinical/lab* (3 clock hours x 15 weeks = 45 clinical/lab clock hours for the semester.)
Fall 2015	Nursing of Adults & Children II	NUR:251	10	6	4	3 x 4 = 12 clock hours for clinical/lab (12 clock hours x 15 weeks = 180 clinical/lab clock hours for the semester)
Spring 2016	Nursing of Adults & Children III	NUR:252	8	5	3	3 x 3 = 9 clock hours for clinical/lab (9 clock hours x 15 weeks = 135 clinical/lab clock hours for the semester)
Spring 2016	Management Skills in Nursing	NUR:253	3	1	2	3 x 2 = 6 clock hours for clinical/lab (6 clock hours x 15 weeks = 90 clinical/lab clock hours for the semester)
	Total hours		39*	23*	14 + 2 *	630 clinical/lab clock hours 60 practicum lab hours

* Totals do not include LPN hours.

Learning Resources

Instructional Resources

Nursing Students have access to the college campus library for reference books and current journals in nursing and general education. Audiovisual materials are available for student use during regular library hours, which may include evening or weekend hours. Orientation to the library information system is available. Assistance with the audiovisual equipment and computer usage is provided. Computers are available in the computer center, the library, and/or the nursing laboratory.

Nursing Skills Laboratory / Simulation Facilities

The Nursing College skills laboratory permits simulation of numerous nursing skills and situations. Students are expected to practice designated skills in the Nursing skills laboratory and to have these skills evaluated on their own time. Students must perform selected skills satisfactorily before those skills can be performed in the clinical setting. The amount of time spent in the Nursing skills laboratory varies according to the specific nursing course. Students may expect to spend two-to-four hours per week in the Nursing skills laboratory outside of scheduled class periods.

Instructional methods may include face-to-face, hybrid, live-virtual lecture, and online.

Students must be prepared for any, and all, classes to be moved online in response to the changes in the Coronavirus status or any other emergency.

Progression and Retention

Admission Requirements

Standards of admission and retention have been established for certain programs and courses to ensure students have the necessary aptitude and background for success. Students applying for a program with selective admissions criteria may be required to take additional tests for admission purposes, and/or meet certain requirements to continue in the program. Admission to the nursing program is on a selective basis. The nursing program application must be signed by the student and an advisor. The nursing program application must be submitted digitally to stlcc-nursing@stlcc.edu for processing. Students are admitted to the nursing program each fall and spring semester. The nursing program admits a maximum of 168 students each semester, divide among the four campuses: Florissant Valley (48), Forest Park (48), Meramec (48), and Wildwood (24). Offers are sent to student applicants based on application date and campus preference availability. Students must complete all pre-enrollment requirements prior to applying to the Nursing Program.

Selected admission spots may be held for qualified applicants from identified community collaborative projects at the discretion of the President and Division Dean of Nursing.

An LPN Bridge course is available for Licensed Practical Nurses (LPNs) who are interested in pursuing the Nursing Associate level degree. Students are admitted to the LPN Bridge course each spring. The LPN Bridge course location is subject to available faculty. For Spring 2024 and Spring 2025, the LPN Bridge course will be held at our Wildwood Campus. Admission checklists and applications for both options of the Nursing Degree Program can be found on the Nursing webpage at www.stlcc.edu/nursing. All applications must be completed, signed by both the student and academic advisor, and submitted to stlcc-nursing@stlcc.edu. Incomplete applications will not be considered.

Evaluation / Grading

Evaluation methods are constructed to measure students' mastery of course outcomes and competencies as stated in the course syllabus.

The following grading scale is used to evaluate the students' understanding and application of nursing concepts and principles. Final course grades are rounded to the nearest whole number.

- A = 92-100%
- B = 84-91%
- C = 76-83%
- D = 70-75%
- F = 69% or below

A course grade of "C" (76%) or better in theory and a "satisfactory" rating in the laboratory and clinical performance is required for a student to be considered successful and to pass a nursing course. A student who receives either a course grade of "D" or "F" or receives an "unsatisfactory" rating in laboratory or clinical performance shall be deemed **unsuccessful** and shall not pass the nursing course and accompanying co-requisite.

Satisfactory and Unsatisfactory are defined as:

- S = Achievement of the stated course outcomes.
- U = Lack of achievement of the stated course outcomes.

Due to the relationship of the laboratory and clinical experiences to the nursing theory course, failure of the student to meet the requirements of laboratory skills or clinical performances will result in the student being unable to be successful in the overall course. Therefore, upon receiving an unsatisfactory laboratory skills or clinical evaluation, the student will receive a 69.4% grade for a course average, or if the course average is lower than 69.4% in theory, the student will receive the lower of the two course averages. The student may attend the theory portion of the course but will not be allowed to attend the clinical site experience. A student is also not allowed to continue with their clinical experience if unsuccessful in the laboratory setting (NUR 152 or NUR 154). If the unsatisfactory clinical laboratory experience is prior to the official withdrawal date, the student may withdraw from the course. If the student does not withdraw by the official withdrawal date, the student will receive a grade of "F" for the course. All course withdrawals must coincide with the [College's withdrawal policy](#).

Misconduct, unethical, and/or dishonest behavior is not acceptable. This includes cheating, plagiarism, or falsifying reports. These behaviors may result in dismissal from the Nursing Program, a grade of "F", and may render the student ineligible for readmission.

Please see STLCC Administrative Procedures as follows:

- G.12.1 [Academic Integrity Violations](#)
- G.19 [Student Code of Conduct](#)

ATI Policy

Assessment Technologies Institute (ATI) offers an assessment driven review program designed to enhance the student learning and NCLEX-RN success. The comprehensive program offers multiple assessment and remediation services. These include an assessment indicator for academic success, critical thinking, learning styles, online tutorials, online practice testing, and proctored testing over the major content areas in the Nursing Program curriculum. The ATI tools, in combination with the Nursing Program curriculum content, assist the students in preparing more efficiently as well as increase confidence with Nursing content. Data from student testing and remediation can be used for the program's quality improvement and outcome evaluations.

Students are responsible for purchasing the required ATI package each semester of the Nursing Program. Failure to purchase the package may result in grade penalties or held grades.

ATI information and orientation resources can be accessed from the student home portal. In order to be successful, it is essential that students spend time navigating the orientation materials provided by ATI.

Modular Study:

ATI provides online review modules that contain written and video materials in all content areas. Students are encouraged to use these modules to supplement course work. Faculty may assign modules to supplement and enhance student learning.

Tutorials:

ATI offers unique tutorials that teach nursing students how to think like a nurse, how to take a nursing assessment, and how to make sound clinical decisions. Nurse Logic is an excellent way to learn the basics of how nurses think and make decisions. Learning System offers practice tests that approach NCLEX style questions in specific nursing content areas that allow students to apply the valuable learning tools from Nurse Logic. Features embedded in the tutorials the help students gain an understanding of the content, such as a "hint" button, a talking glossary, and a critical thinking guide. Students are encouraged to take advantage of these resources even if they are not specifically assigned as coursework in a nursing course.

Assessments:

Standardized assessments will help students identify what they know as well as areas requiring active learning/remediation. There are practice assessments available to the student and required standardized proctored assessments that will be scheduled each semester. ATI testing is a course requirement in each Nursing theory course at STLCC. Proctored testing will likely occur outside your normal classroom time. Independent learning through the ATI resources and the assessments (practice and proctored) will not always directly parallel the classroom instruction but the combined process will enhance student critical thinking and support overall success in mastering nursing concepts and content. ATI assessments effectively support a student's learning and integration of theory and clinical nursing.

Active Learning/Remediation:

Active learning and remediation is a process of reviewing content in areas that were not learned or not fully understood as demonstrated on an assessment. It is intended to help the student review important information to be successful in nursing courses and on the NCLEX. The student's individual performance profile will contain a list of the topics to review. The student will be expected to remediate using the Focused review containing links to ATI books, media clips, and active learning templates.

Faculty have online access to detailed information regarding the timing and duration of time spent on the assessment, focused reviews, and tutorials by each student. Students may be required to provide documentation that ATI work was completed using the "My Transcript" feature under "My Results" within the ATI student Home Page or by submitting written remediation templates. Faculty will inform students when and how ATI work will be validated.

Ten percent (10%) of the student's grade in NUR 151, 153, 160, 251, and 252 will be determined by the level of proficiency achieved on ATI proctored exams. Ninety percent (90%) of the student's grade in the above courses will be determined by the course final (25%) and classroom testing (65%). In NUR 253, twenty percent (20%) of the student's course grade will be determined by ATI proctored exams. Two practice tests will be made available prior to each proctored exam. Specific directions regarding practice tests, remediation, and proctored exams will occur in individual courses.

The first practice tests will be given with rationales enabled. This allows students to review the rationale for each question. In order for students to achieve the maximum benefit from the first practice test, all questions should be answered carefully, all rationales reviewed, and notes taken for further clarification on incorrect answers for future review. A focused review is not generated if rationales are provided.

The second practice test will occur within 4-7 days of the first. This practice test will not have rationales enabled. A focused review will be generated based on topics answered incorrectly. Students must prepare for the second practice test and take it seriously to ensure the focused review is generated based on what the student still needs to learn and not redundant topics.

It is highly advised that the second practice test is taken without notes or books to ensure the focused review is generated with the appropriate guidance for student learning. The second practice test and the associated remediation is preparation for the first proctored exams. Proctored exams become part of the student's grad as described in table below. only the first attempt at proctored exams generates the student's "pulse" status, the best indicator of the student's overall performance in achieving course and program outcomes that result in successful completion of the NCLEX.

Remediation is critical. Consistent remediation throughout the program will improve the student's "pulse" status. To that end, remediation is rewarded as described in the below.

Table A: % awarded is = 10% of course grade in NUR:151, 153, 160, 251, 25220% of course grade in NUR 253. Remediation is required for all second attempts whether retesting is required or optional.

Proficiency on Proctored Exams	% Awarded for 1 st attempt	% Awarded after 2 nd attempt
Level 3	100%	2 ND test is optional, but recommended
Level 2	84%	2 ND test is optional, but recommended 95% if at level 3 90% with level 2 84% with level 1 84% if < level 1
Level 1	76%; 2 ND test is required	85% if at level 3 80% if at level 2 76% if at level 1 Maintains 1 st Exam Score if < level 1
< Level 1	60%; 2 ND test is required	85% if at level 3 80% if at level 2 76% if at level 1 60% < Level 1

For the Comprehensive Predictor (administered in NUR 253), the grade recorded will be the “Predicted Probability of Passing the NCLEX”. Students who score <90% predicted probability will be required to remediate and take a second version of the Comprehensive Predictor, and the second score will be the final recorded score. Student who score 90% or > are *encouraged* to retake the second version of the Comprehensive Predictor, and the higher of the 2 predictability scores will be the recorded grade.

Course	Assessments
NUR 151: Fundamentals	Critical Thinking Assessment: Entrance (40-item test) RN Fundamentals 2016 (70-item test)
NUR 153: Adult/Child 1	RN Maternal Newborn 2016 (70-item test) Dosage Calculation RN Adult Medical Surgical 2.0 (25-item test)
NUR 160: LPN Bridge	RN Maternal Newborn 2016 (70-item test) RN Fundamentals 2016 (70-item test)
NUR 251: Adult/Child 2	RN Mental Health 2016 (70-item test)RN Nutrition 2016 (70-item test) RN Pharmacology 2016 (70-item test)
NUR 252: Adult/Child 3	RN Adult Medical Surgical (90-item test) RN Nursing Care of Children (70-item test)
NUR 253: Management	RN Leadership (70-item test) RN Comprehensive Predictor (180-item test)Critical Thinking – Exit (40-item test)

Attendance Policies

Students are responsible for attendance in their nursing courses, nursing skills laboratory, exams, and clinical performances. A list of clinical sites per campus is listed on the following page.

Classroom Attendance

Students are responsible for course content and are encouraged to attend all classes. See course syllabi for specific guidelines. Students who are irregular in class attendance may be counseled. Instructors may refuse to admit students who are tardy.

Clinical Attendance

Attendance in clinical laboratory experiences is expected. All clinical absences may result in additional assignment(s) as deemed by nursing faculty. Clinical absences in excess of the equivalent of one clinical week’s hours may result in an inability to meet clinical outcomes and, therefore, failure of the course. At the discretion of the clinical faculty, clinical may still be conducted when the campus is closed.

Prior to any clinical absence, it is the student’s responsibility to inform the clinical instructor, per their instruction, prior to the scheduled clinical time. Punctuality and preparedness are expected at all times. Instructors may refuse to admit students who are tardy.

The nursing faculty have the responsibility to refuse a student admission to a clinical area whose preparation and/or performance is unsatisfactory. This will constitute a clinical absence. Students may be restricted from a clinical area during a course. Restriction from clinical areas result in an absence. Restriction may be enforced for the following reasons:

1. The professional judgment of the faculty, the student does not have sufficient theoretical background to function safely and completely in the clinical area.
2. Failure to demonstrate competence in the Nursing College Laboratory.
3. The student’s performance directly or indirectly endangers a patient’s safety and welfare.
4. The student requires supervision in excess of what is expected for the level of education.
5. Medically imposed restrictions.

St. Louis Community College Nursing Program Clinical Sites (Current)

Clinical Site	Florissant Valley	Forest Park	Meramec	Wildwood
Barnes-Jewish Hospital (BJC)		✓		
Cardinal Glennon (SSM)		✓		✓
Christian Hospital (BJC)	✓	✓		
DePaul Health Center (SSM)	✓	✓	✓	
Mercy South		✓	✓	
Mercy St. Louis	✓	✓	✓	✓
Mercy Rehabilitation Hospital		✓		✓
Ranken Jordan	✓			
St. Clare Health Center (SSM)		✓	✓	✓
St. Joseph's Lake St. Louis (SSM)				✓
St. Louis Children's Hospital	✓		✓	
St. Luke's Hospital			✓	
St. Mary's Health Center (SSM)		✓	✓	✓

Observation and/or Preceptor Sites (in addition to those listed above)	Florissant Valley	Forest Park	Meramec	Wildwood
Bethesda Dilworth		✓		
SSM Health St. Louis University Hospital		✓		
St. Louis Forensic Treatment Center (f/k/a St. Louis Psychiatric Rehabilitation Center)		✓		
VA St. Louis Health Care System	✓			
Mercy Washington			✓	
St. Louis University Hospital (SSM)	✓	✓		

Program Retention / Course Withdrawal

Any student intending to withdraw from a Nursing course must notify the course faculty, clinical instructor, and campus program coordinator prior to not attending lecture or clinical and must schedule an appointment for an Exit Interview (located in Appendix C) with the campus program coordinator, Nursing retention coach, or designee. Failure to make proper notifications to the aforementioned individuals prior to withdrawing and completing an exit interview process within one (1) week of withdrawal, may result in the inability to re-enroll in any nursing courses. Appointments to meet with the campus program coordinator, retention coach, or designee can be made through the campus secretary.

Nursing students who are unsuccessful in a nursing course are required to schedule an appointment for an exit interview with the campus program coordinator, retention coach, or designee. Failure to complete this process within one week of withdrawal may result in the inability to re-enroll in nursing courses.

Readmission Policies

Violation of the student code of conduct may deem a student ineligible for readmission. Students may enroll in any given semester a maximum of two (2) times, applicable courses include NUR 151/152, NUR 153/154, NUR 251, and NUR 252/253. Withdrawals and failures constitute an enrollment attempt. An LPN Bridge eligible students who fail or withdraw from NUR 160 will need to complete the challenge process to attempt to place into the second semester of the program. Please see the challenge process outlined in the next section.

General Readmission Information:

Students who withdraw from nursing courses for any reason may be subject to readmission policies as outlined below. Students must also remain in clinical compliance with all additional requirements through the appropriate third-party affiliate listed in the clinical compliance section of this handbook.

Semester Specific Readmission Requirements:

A student who withdraws or is unsuccessful in NUR 153/154, NUR 251, or NUR 252/253 will be required to complete an exit interview with the campus program coordinator or designee. Failure to complete this process within one (1) week of withdrawing or being unsuccessful may result in the inability to re-enroll in nursing courses.

A student who has not been enrolled in the nursing program for more than one full semester and requests readmission (sits out of the program for two full semesters) must take the appropriate challenge examinations as identified below. The student may sit out for a maximum of two full semesters before having to restart the nursing program admission process (if eligible).

First Semester:

A student who withdraws or has not been successful in NUR 151/152 is required first complete an exit interview with the campus program coordinator or designee and next to reapply to the Nursing Program and meet all the admission requirements. This will place the student on the applicant list and the student will be readmitted in accordance to the admission process.

Second Semester:

A student who withdraws or has not been successful in NUR 153/154 is required to first complete an exit interview with the campus program coordinator or designee then the student must have a comprehensive final examination for NUR 151 with a minimum score of 76% and satisfactory performance on a technical skill examination NUR 152.

Third Semester:

A student who withdraws or has not been successful in NUR 251 is required to first complete an exit interview with the campus program coordinator or designee then the student must have a comprehensive final examination for NUR 151 with a minimum score of 76%; a comprehensive final examination for NUR 153 with a minimum score of 76%, and satisfactory performance of technical skills examinations for NUR 152 and NUR 154.

Fourth Semester:

A student who withdraws or has not been successful in NUR 252/253 is required to first complete an exit interview with the campus program coordinator or designee then the student must have a comprehensive final examination for NUR 151 with

a minimum score of 76%; a comprehensive final examination for NUR 153 with a minimum score of 76%, a comprehensive final examination for NUR 251 with a minimum score of 76% and satisfactory performance of technical skills examinations for NUR 152 and NUR 154. If a student is successful in one of the courses, NUR 252 or NUR 253, the Division Dean of Nursing may approve the student to repeat only the failed course and not both courses.

LPN Bridge:

An LPN Bridge student who withdraws or has not been successful in NUR 160 is required to first complete an exit interview with the campus program coordinator or designee and then request readmission, beginning the nursing admissions process from the beginning. On completing the entrance application, a student may request to challenge their knowledge and skills to place into the trajected semester, NUR 251. Please see the challenge processes outlined in the next section.

Program Readmission

Student who are unsuccessful may attempt to be readmitted to the Nursing Program with the following considerations:

1. After satisfactorily meeting the stated requirements, applicants for readmission the nursing program are considered based on available seats.
2. Students who are ineligible for readmission due to excessive failures must wait **a minimum of five (5) years** from the date of the most recently failed course to apply for readmission. Students who have been unsuccessful after two attempts in Fundamentals of Nursing (NUR 151/152) must also wait a minimum of five (5) years from the date of the most recently unsuccessful Fundamentals of Nursing course.
3. All readmissions will be accepted in the order as delineated in the section titled "Placement Policy Regarding LPN Bridge completion, Successful Student Transfers, and Unsuccessful Student Readmission/ Transfers" (see page 22).

Transfer Procedure and Challenge Process

Internal transfers refer to students requesting a transfer to another campus within the STLCC system. External transfers refer to students who have attended a nursing program at another institution and wish to further pursue their Nursing Degree at STLCC.

Internal Campus Transfers

Internal transfers are permitted if the student is eligible to return to their original campus' nursing program. Transfers may only occur if the student has been enrolled in a nursing course within the previous three semesters (following the previously mentioned rule that students may only sit out for a maximum of two semesters). If the student has not taken nursing courses for a semester or more, qualified internal transfer students will be evaluated in the same manner as STLCC readmission students.

Internal transfer nursing students are required to schedule an appointment for an exit interview with their original campus' program coordinator or designee within one week of the request for transfer. Failure to complete this process may result in the inability to re-enroll in nursing courses. Appointments to meet with the campus program coordinator or designee may be made through the campus' secretary.

Students must also remain in clinical compliance for transfers and comply with the requirements at the approved campus' clinical sites. Students requesting an internal transfer must do so no later than two (2) weeks prior to the end of the semester.

External Transfers

Students who have completed nursing courses at another institution will be required to first meet all admission requirements detailed by the checklists in Appendix A and may be able to challenge entry to a specific semester.

Challenge Process

The challenge process includes completion of the final exam for NUR 151 or NUR 153 with a minimum score of 76% and a satisfactory skills examination of material from NUR 152 and NUR 154. The challenge exam process can be initiated after submitting a completed application to stlcc-nursing@stlcc.edu. The challenge exam will be facilitated by a campus program coordinator.

Successful challenges will result in the student's placement into the appropriate course and placed at the campus that is able to accommodate the additional student, not to exceed the cohort cap of 48 students at Florissant Valley, Forest Park, and Meramec and 24 students at Wildwood. Unsuccessful challenges will be placed on the current applicant list for admission into NUR 151/152 with the next admission cohort.

External transfer students cannot challenge into the fourth semester (NUR 252/253) as this would not allow students to meet STLCC's residency requirement of 15 credit hours for degree conferral. All external transfer students are required to complete the same clinical compliance pieces as all other nursing students.

Placement Policy Regarding LPN Bridge completion, Successful Student Transfers, and Unsuccessful Student Readmission / Transfers

Campus placement policies regarding all LPN Bridge course students, successful student transfers, unsuccessful transfers, and student readmission will operate with the following priority:

1. LPN Bridge students who have successfully completed NUR 160
2. A successful student returning from a leave of absence, excluding students with incomplete grades
3. An unsuccessful LPN Bridge student successfully challenging into NUR 153
4. Students withdrawing for any reason will be readmitted based on their course average at the time of exit or course completion
 - a. Students desiring to stay at their original campus will be readmitted first
 - b. Internal transfer students will be admitted next
5. External transfer students who have successfully completed a challenge examination.

All placement is subject to campus availability and resources.

District Readmission Committee for Nursing, OTA, and PTA

There is a District Readmission Committee for Nursing, OTA, and PTA programs that is approved by the Committee Chair and hears all readmission concerns related to the aforementioned programs policies. The committee membership is comprised of the Chairperson, the Division Dean of Nursing, the Dean of Health Sciences, the four campus Nursing Program Coordinators, the OTA Program Coordinator, the PTA Program Coordinator, and one faculty member from each campus. The faculty member is voted to serve 2-year terms or as directed by the affiliated Deans. A different faculty member may serve as an alternate if the faculty representative is unavailable.

The readmission appeal form is available from the Program Coordinators of the respective programs. The Chairperson of the committee will notify the student of the Committee's decision. The student may appeal the decision in writing to the Campus President within ten (10) business days of the receipt of the committee decision. The decision of the Campus President, or their designee, shall be final. Under no condition will the Readmission Committee arbitrate on grades. In addition, the Committee shall not hear appeals alleging violations of students' rights and/or responsibilities for academic appeals.

Retention Policies

The Nursing Program is an intensive and highly structured academic and clinical experience for students. It is not self-contained but affects the staff and patients of the cooperating agencies where the clinical experiences of the program are carried out. The Nursing Program at St. Louis Community College share a serious responsibility toward those agencies and their staffs and patients to send forward only nursing students who are adequately prepared to perform assigned tasks with competence. For these reasons, students within the Nursing Program at St. Louis Community College must maintain standards and procedures appropriately. Requirements to remain within the Nursing Program are as follows:

1. A cumulative grade point average (GPA) of 2.0 is required.
2. A grade of "C" or higher is required in all nursing courses as well as any prerequisite courses for the program.
3. A student-initiated withdrawal from a nursing course will result in full withdrawal from the nursing program. The student may reapply for re-admission to the program, outlined previously, however, if the student has withdrawn or been unsuccessful in any nursing course twice, any future attempts must be approved by the District Readmission Appeal Committee. This process may be initiated by a campus program coordinator.

4. A student who fails to maintain a cumulative GPA of 2.0, receives a grade of less than “C” in any nursing course or prerequisite course, or who does not return to a nursing course when expected, will automatically be withdrawn from the nursing program. The student may apply for readmission to the program following the appeal process.

Graduation Requirements

Students are responsible for meeting the St. Louis Community College requirements for graduation as outline in the college catalog. Students who expect to graduate in December should file an application for graduation no later than October 1; students who expect to graduate in May should file an application for graduation no later than March 1. The Nursing Program hosts a pinning ceremony for graduating cohorts in addition to the degree conferral ceremony hosted by the college.

Post-Graduation Licensure (Registered Nurse)

A graduate of the STLCC Nursing ADN Program is eligible to apply to the Missouri State Board of Nursing to sit for the National Council Licensure Examination for Registered Nurses. The Board determines eligibility requirements for candidates who apply to take the NCLEX-RN.

Successful completion of the examination is necessary to become a licensed registered nurse (RN). During a student’s third semester in the Nursing Program at STLCC, information will be provided to assist with the NCLEX-RN application and accompanying items required of the student. The NCLEX-RN memo provided to students can be found in Appendix D. The memo is updated each semester with each graduating cohort as deadlines are subject to graduation date.

Successful completion of the Nursing ADN Program at STLCC does not guarantee eligibility to sit for the NCLEX-RN. One of the functions of the Missouri State Board of Nursing is to protect the public meaning and as such the Board may refuse licensure to any applicant who may jeopardize the well-being of Missouri citizens. The Missouri State Board of Nursing may also refuse to grant the student permission to sit for the licensing exam or refuse to issue any certificate for registration of authority, permit, or license for the cause(s) outlined in the Missouri State Nurse Practice Act, Chapter 335.066 RSMO, as amended. The full rationale may be found on the Missouri State Board of Nursing website, under [Rules and Statutes](#). Nursing ADN Program student graduates at STLCC who are not currently U.S. citizens may not be eligible for RN licensure through the Missouri Board of Nursing, additional information regarding the [Citizen Lawful Presence](#) initiatives may be found on the Missouri State Board of Nursing’s website.

Health and Safety

STLCC Technical Standards Statement

Introduction

Aligned with the college’s Mission, Vision, and Values, the Nursing Division at St. Louis Community College strives to create inclusive and transformative educational experiences for future generations of health care professionals. Valuing the uniqueness and potential of each learner, we work to foster a culture of respect and equality that is welcoming to all students. Rooted in an appreciation for the diversity among our learners, we encourage individuals with disabilities to engage with the Access Office at STLCC regarding their academic needs.

Technical Standards

Specific to the STLCC Nursing Program, successful applicants must possess skills within the following domain areas: Observation, Communication, Use and Interpret, Motor, Behavioral, Social, Professional, Intellectual, Conceptual, and Integrative. The precious attributes, also referred to as Technical Standards, have been developed to create transparency and promote understanding surrounding expectations of STLCC’s Nursing and Health Sciences Divisions. These Technical Standards describe performance abilities and characteristics necessary for successful completion of our programs and can be met with or without reasonable accommodations.

Request for Accommodation

After reviewing the Technical Standards, any student who believes they require disability-related accommodations to fully engage and participate in the program should contact the Access Office at STLCC. Given the intricacies associated with clinical-based programs, additional time may be needed to effectively implement an accommodation. In general, disability-related accommodations are not retroactively applied therefore, students are encouraged to engage in conversations with the Access Office as soon as possible. Contact information can be found on the [Access Office’s webpage](#).

Nursing Program Technical Standards

<i>Domain</i>	<i>Technical Standard – Students should be able to...</i>
<i>Observation</i>	<ul style="list-style-type: none"> • Acquire information from demonstrations (up close and from afar), and experiences in nursing courses such as lecture, group, and physical demonstrations, program experiences, written documents, and computer systems (e.g., literature searches & data retrieval). • Recognize and assess patient changes in mood, activity, cognition, verbal, and non-verbal communication.
<i>Communication</i>	<ul style="list-style-type: none"> • Communicate effectively and sensitively in English both in person and in writing. • Communicate effectively and respectfully with faculty, preceptors, peers, and all members of the healthcare team. • Accurately elicit information including a medical history and other information to adequately and effectively evaluate a patient’s condition.
<i>Use and Interpret</i>	<ul style="list-style-type: none"> • Use and interpret information from assessment techniques such as those involved in assessing respiratory and cardiac function, blood pressure, blood sugar, and neurological status. • Use and interpret information related to physiologic phenomena generated from diagnostic tools such as a sphygmomanometer, otoscope, or ophthalmoscope, during a comprehensive examination of a patient.
<i>Motor</i>	<ul style="list-style-type: none"> • Possess psychomotor skills necessary to provide or assist in providing holistic nursing care including safe and effective procedures, treatments, and medication administration.
<i>Behavioral, Social, Professional</i>	<ul style="list-style-type: none"> • Maintain mature, sensitive, effective relationships with patients, families, students, faculty, staff, preceptors, and other professionals under all circumstances. • Follow the dress code of respective institution and follow the American Nurses Association (ANA) Code of Ethics. • Possess the emotional stability to function under stress and adapt to rapidly changing environments inherent to the classroom and practice settings with or without accommodations. • Maintain mature, sensitive, effective relationships with individuals, families, and groups from a variety of social, emotional, cultural, and intellectual backgrounds. • Show personal qualities of concern for others, integrity, accountability, interest, and motivation.
<i>Intellectual, Conceptual, Integrative</i>	<ul style="list-style-type: none"> • Measure, calculate, reason, analyze, and synthesize data related to the diagnosis and treatment of patients. • Exercise proper judgment and complete responsibilities in a timely and accurate manner. • Synthesize information, problem solve, and think critically to determine the most appropriate theory, assessment, treatment, and/or intervention strategy. • Ask for help when needed and make proper judgments of when a nursing task can or cannot be carried out alone.

Health Policy

All Nursing Students are required to meet the specific health requirements of each assigned clinical agency. The STLCC Nursing Program is partnered with local hospitals for clinical assignments and all requirements are to remain in compliance with those partners. All requirements are described below:

1. A physical examination completed within six (6) months of the start of the student's first semester upon being admitted to the program
2. Health Insurance – STLCC and the clinical agencies are not responsible for any occupational hazards encountered during the course of study (i.e., infections, communicable diseases, or injury). Students are responsible for their own health care and are required to have health insurance throughout the nursing program. Students are also responsible for any costs and expenses they incur relating to illness or injury during clinical.
3. Immunization requirements (subject to current requirements and change)
 - a. Two doses of mumps-measles-rubella (MMR) vaccine or MMR blood IGG antibody titers showing immunity
 - b. Three doses of Hepatitis B series or blood IGG antibody titer showing immunity or signed declination form
 - c. Two doses of Varicella immunization or blood IGG antibody titer showing immunity
 - d. Tdap immunization every 10 years
 - e. Two negative TB skin tests (PPD) with proof of the last two TB tests. They must be within one year of each other and the most recent must be within the last calendar year. While at STLCC, students must have one TB screening every 12 months to remain in compliance. If PPD is positive, students will need a negative chest x-ray. Also accepted in place of the PPD is one of two Interferon-Gamma Release Assays (IGRAs), either QuantiFERon TB Gold or T-Spot TB.
 - f. Seasonal Influenza vaccine (annually)
 - g. Covid-19 vaccine (boosters also requested by specific clinical partners)

Exemptions and Accommodations

Medical exemptions to annual influenza or coronavirus vaccinations may be granted based on certain medical contraindications, including history or documented test indications of severe allergy to the vaccine or its components and history of Guillain-Barre syndrome. The faculty or student seeking a medical exemption must submit an exemption request form with documentation of medical contraindications by October 1st. Medical exemptions are valid only for the flu season in which they are granted.

Religious accommodations to annual influenza or coronavirus vaccinations may be granted based on sincerely held religious beliefs, practices, or observances. The faculty or student seeking a religious accommodation must submit an accommodation request form and any required documentation one month prior to clinical rotation. Religious accommodations are valid only for the season in which they are granted.

If a clinical partner requires either an influenza or coronavirus vaccine as a condition for clinical placement, all students and faculty who practice at that clinical site must receive the vaccination. If filing an exemption for any reason that is denied, the faculty or student must then receive the vaccination within 30-days of exemption denial, or they will be required to transfer to an alternate clinical site and/or campus. If space is not available on an alternate campus, the student will be required to sit out until a seat is available.

Infection Control / Standard Precaution Guidelines

All nursing personnel and nursing students are professionally and ethically obligated to provide patient care with compassion and respect for human dignity. Hence, they may not ethically refuse to care for patients solely because the patient is at risk of contracting, or has, an infectious disease such as Human Immunodeficiency Virus (HIV), Hepatitis B Virus, Coronavirus, or others. All rules of confidentiality are followed when working with patients.

For the safety of patients and others during influenza season and working in areas with patients afflicted by the coronavirus, faculty and students who are granted an exemption may be required to wear a surgical or isolation mask in patient care or clinical care areas and may be denied access to certain patient care or clinical areas.

1. If individuals are considering a career in nursing, they should be aware that during the course of their education and subsequent employment, they are likely to be working in situations where exposure to infectious diseases is possible. This is an occupational risk for all healthcare workers and individuals should not become healthcare workers unless they recognize and accept this risk.

2. Education and strict adherence to well-established infection control guidelines, however, can reduce this risk. Thorough training in infection control procedures will be an important part of the students' program.
3. Students in the nursing program are expected to care for patients with any infectious disease.
4. All care shall be provided with respect for the dignity of the patient, unrestricted by considerations of social or economic status, personal attributes, or the nature of the health problem.
5. Students will be provided with supplies necessary to meet CDC guidelines at affiliating agencies.

Missouri State Board of Nursing Position Statement regarding HIV or HBV Infection

The Missouri State Board of Nursing recognizes the serious implications the spread of HIV or HBV has on the health, safety, and welfare of the public, as well as the Board's mandated responsibility to the public for assuring safe and competent nursing care.

All licensed nurses and nursing students who discriminate against a patient based on HIV or HBV infection status or makes HIV or HBV testing a condition of treatment shall be subject to the denial of licensure or the disciplinary processes of the Missouri State Board of Nursing.

All licensed nurses and nursing students with HIV or HBV who perform invasive procedures are encouraged by the Missouri State Board of Nursing to voluntarily participate in the Department of Health's evaluation process.

It is the position of the Missouri State Board of Nursing that all licensed nurses and nursing students with HIV or HBV are entitled to the same reasonable accommodation granted by the Americans with Disabilities Act.

Exposure Guidelines

STLCC complies with CDC, State, County, and internal College health and safety regulations regarding all outbreaks and diseases. In the event of an exposure:

1. Students must wear appropriate protective clothing/equipment when performing tasks that may involve exposure to blood/bodily fluids.
2. Any direct exposure to blood/bodily fluids occurring while functioning as a nursing student must be reported immediately to the clinical instructor.
3. Students exposed to blood/body fluids shall follow this protocol:
 - A. Wash the area immediately with a disinfectant agent, for eye splashes rinse the area with clean water.
 - B. Report the incident to the clinical instructor.
 - C. Follow agency policy regarding exposures.
 - D. The student is responsible for all costs related to the exposure, triage, and treatment.

Latex Information and Policy

To the greatest extent possible, STLCC minimizes exposure and prevents additional sensitization of individuals to latex. Non-latex products and supplies are utilized in the nursing laboratories including non-latex gloves, tape, tubing, catheters, and blood pressure equipment.

All latex sensitive/allergic individuals must be aware that learning environments may utilize latex and should read the contents of packages and equipment prior to use.

Individuals who are at elevated risk for latex allergies include:

- People with congenital defects requiring intermittent urinary catheterization
- Employees who wear gloves on a frequent basis
- People with multiple allergies, especially to fruits, kiwis, bananas, avocados, and chestnuts.

A student who is latex sensitive/allergic must notify the course coordinator and lab faculty of that sensitivity/allergy prior to the beginning of each semester.

If a student develops a latex sensitivity/allergic reaction during their enrollment, they are to contact their health care provider and notify the course coordinator.

For additional information regarding latex allergies please refer to the CDC website:

<https://www.cdc.gov/niosh/topics/latex/>

Substance Abuse Policy

Nursing students at STLCC are responsible for maintaining standards and adhering to regulations adopted by the College as stated in the Student Handbook. The educational environment in the classroom, college lab, and clinical areas will be Drug/Alcohol-Free. The following policy has been established to:

1. Maintain a working, learning, and clinical education environment that is safe and healthy for students, faculty, staff, and the patients we care for.
2. Ensure a positive reputation of the college and its graduates within the community.
3. Minimize the number of accidental injuries to person and property.

All students, faculty, and staff members are prohibited from being under the influence of alcohol, or illegal drugs during classroom, college lab, clinical hours, or any college sponsored function. The unlawful manufacture, distribution, possession, or use of illegal or controlled substances while on college property or at a college sanctioned event is strictly prohibited.

Possession of prescription drugs on campus or at the clinical site by any person other than the one it was prescribed for is prohibited. Such drugs are to be used only in the manner they are prescribed.

The purpose of these policies is to provide drug-free, healthy, safe, and secure environments for all nursing students. The College recognizes drug/alcohol abuse as a potential health, safety, and security problem.

Students needing help with dealing with drug/alcohol abuse are encouraged to seek assistance in the College Counseling Department.

Random drug/alcohol testing may be required if the student reports to the clinical, college lab, classroom setting, or college sponsored function in an impaired condition. Drug testing may be required if the student is involved in an accident at the clinical site, if they exhibit a severe prolonged reduction in productivity, or any other reasonable cause which is determined at the discretion of the faculty/staff member. Failure to obtain drug testing within 2 hours of the instructor's request or will be considered a testing refusal. A student who refuses or has a positive screening will not be allowed to return to clinical, college lab, class, or other college sponsored activities until they meet with the Student Placement Coordinator (or designated Program Representative).

The Student Placement Coordinator (or designated Program Representative) will utilize clinical site guidelines as college policies in the decision-making process. A positive test may result in immediate dismissal from the program.

All pre-enrollment screenings, random screening, and all other expenses, including transportation incurred will be the responsibility of the student.

Use of Human Subjects in Training and Associated Health Risks

To become proficient in skills required in the Nursing Program, students will be asked to volunteer to act as patients during classroom and lab activities. If a student does not feel comfortable acting as a patient for a particular skill(s), it is the responsibility of the student to communicate with the instructor(s) that they do not give consent for the instructor or students to practice the skill(s) on them. Without this communication, it is assumed that all students give consent for instructors and other students to practice Nursing skills on them. It is also assumed that the student understands the risks involved in these activities.

Professional Conduct

Nursing Student Code of Conduct

The faculty at STLCC believe that the standards of professional conduct are an integral aspect of professional education and expect nursing students to adhere to professional standards. Nursing students must adhere to the STLCC Code of Student Conduct specified in the Student Handbook. Additionally, the nursing faculty hold students enrolled in the nursing program accountable to the American Nurses Association code of Ethics available online at [Code of Ethics for Nurses With Interpretive Statements \(View Only for Members and Non-Members\) \(nursingworld.org\)](#). Students are also to adhere to the National Council of State Boards of Nursing's (NCSBN) "Social Media Guidelines for Nurses," available at [Social Media Guidelines for Nurses | NCSBN](#), and NCSBN's "Professional Boundaries in Nursing," available at [Professional Boundaries in Nursing | NCSBN](#).

Behavior inconsistent with these standards is inappropriate for students aspiring to a professional nursing career. Any student who violates the standards will be counseled, referred appropriately according to the Student Handbook, and subject to dismissal from the nursing program.

These standards include:

1. Respects the dignity and worth of all individuals, regardless of the nature of health problems, social or economic status, or personal attributes.
2. Respects patients' right to self-determination.
3. Provides safe, humane care, putting the needs of patients ahead of those of self.
4. Delivers patient care without prejudice.
5. Takes into account the value of others.
6. Demonstrates respect for all individuals with whom the student interacts including colleagues, students, faculty, and families.
7. Does not harass or threaten others.
8. Provides opportunities for patients to participate in planning of care.
9. Collaborates through the use of open dialogue, expresses oneself clearly and accurately.
10. Maintains professional boundaries.
11. Maintains confidentiality, including privacy of patients.
12. Advocates for patients.
13. Maintains accountability and responsibility for one's own actions, offers assistance to others instead of waiting to be asked.
14. Exhibits dependability by attending class and clinical in an unimpaired state including but not limited to the use of drugs and alcohol.
15. Demonstrates reliability by fulfilling all program obligations.
16. Displays honesty. Does not lie or provide false information, does not falsify patient records, or falsely represent oneself.
17. Demonstrates personal and professional integrity. Does not cheat on tests or check-outs. Does not borrow or use work that has been completed by others and does not allow others to use work they have completed. Does not copy material word for word, acknowledges through appropriate citations any words or ideas authored by someone else. Does not use profanity or participate in indecent or lewd behavior. Is not insubordinate and does not assault others either verbally or physically.
18. Accepts responsibility for professional growth. This includes preparing well for clinical so that patients may be cared for safely. Reflects on own behaviors, identifies areas for self-improvement, and accepts and reflects on constructive feedback from nursing faculty and institutional staff.
19. Is responsible for articulating nursing values and maintaining the integrity of the profession including reporting acts of dishonesty and professional misconduct.
20. Acts in an ethical manner. Adheres to the ANA Code of Ethics for Nurses with Interpretive Statements (2001) which has set the ethical standard for the nursing profession. Adheres to the established dress code in all professional and clinical activities.

Professional Appearance / Dress Code

Students are expected to dress in a professional manner, which includes maintaining a clean and ironed uniform, and being in compliance with the clinical agency and the nursing program dress code. Refer to the individual course syllabi for additional dress code policies.

Nursing Uniform Dress Code and Standards for Clinical Experiences:

(Revised 8.2022)

1. Uniforms are to be worn for all clinical laboratory experiences.
2. The uniform will consist of a gray scrub top with the college logo, purchased through the college bookstore, and navy-blue scrub pants or skirt that comes past the knees. If a skirt is selected, the student is expected to wear plain hosiery or similar leg covering. Students may wear a long sleeve shirt under their scrub top if it is white, black, navy, or gray.
3. Pants and tops must fit to allow for bending and raising arms without exposing undergarments, lower backs, midriffs, or cleavage. Pant legs must not touch the floor.
4. Uniforms are to be clean, neat, and wrinkle free.
5. Footwear should be closed-to, closed-heel, slip resistant, and in good condition. Black or dark colored is preferred.
6. When picking up clinical assignments, students must wear a lab coat over appropriate business attire or the nursing uniform. Appropriate business attire excludes blue jeans, shorts, sandals, halter tops, exercise clothes, or clothing with logos, endorsements of non-affiliated organizations, political statements, or personal beliefs.
7. Your college identification badge must be always worn above the waist, including when picking up an assignment.
8. Make-up and jewelry should be minimal, and students should refrain from jewelry that dangles as it can pose a safety risk. Earrings, facial jewelry, and any visible body piercings should be limited and not interfere with direct patient care. All visible jewelry should be limited to a stud/post for safety reasons. Students are asked to limit rings to one per hand.
9. Students are expected to follow good personal hygiene and cleanliness standards. Hair should be clean and neat. Strong odors, perfumes, or colognes should be avoided.
10. Tattoos should be covered if they have the potential to be offensive to colleagues, hospital staff, or patients based on racial, sexual, religious, ethnic, or crude language.
11. Students' nails should be neat, clean, maintained at a length no more than $\frac{1}{4}$ " from the end of the finger to the tip of the nails. Nails should be kept natural (no acrylic, wraps, overlay, dip, or gel). If the student chooses to wear nail polish, it must be free of chips.
12. Mustaches and beards should be neatly trimmed. Facial hair may need to be covered or removed in certain clinical settings/situations per clinical partner policies (ex. Utilizing N95 masks). Religious reasons for facial hair will be addressed on an individual basis.
13. Hair should be clean, neat, and in a style that can be pulled back away from the face. Hair should be worn in a style that does not interfere with client care or pose a risk for infection or safety issues for the student or client. A surgical cap may be worn if the student chooses. Surgical caps must be solid navy, gray, white, or black.
14. Smoking is prohibited in the clinical setting and during clinical hours. Students may not smell like smoke in the clinical setting whether picking up assignments or during clinical hours.
15. Students who choose not to adhere to the dress code may be asked to leave clinical and this will result in a clinical absence.
16. Agency guidelines must be adhered to as directed.
17. The clinical uniform includes items pertinent to the student being successful in the clinical setting. Students are expected to have:
 - a. College Name Badge
 - b. Stethoscope
 - c. Bandage Scissors
 - d. Pen Light
 - e. Black ink pens
 - f. Analog watch with a second hand

Classroom Recording Policy (Updated 5.2013)

1. Students may record lecture and/or classroom activities with the permission of the instructor
2. Lecture and/or classroom activities, whether via electronic, written, or other format, should be in accordance with the ethical standards reflected by the ANA social media statement and NCSBN white paper. NCSBN's white paper is available at [Social Media.pdf \(ncsbn.org\)](#).
3. Test review **cannot** be recorded.
4. Permission to record may be withdrawn by the instructor at any time and without advance notice.
5. Students acknowledge any speaker can make a statement that conflicts with the textbook. It is the student's responsibility to clarify the information.

District Testing Policy (Updated 12/2022)

1. Students arriving after the starting time for an exam will be allowed to test with the remaining time allotted for the exam. As an example, if 40 minutes are allotted to complete the exam and the student arrives 20 minutes late, the student will have 20 minutes to complete the exam.
2. A student who cannot take a scheduled exam on its intended day/time must notify faculty prior to the exam.
 - a. Failure to show is subject to receiving a grade of "0" for non-attendance.
 - b. Late testing may be subject to point deductions, alternate exams, etc. ***see course syllabus for specific procedures.**
 - c. Unavoidable, extenuating circumstances regarding failure to show will be considered with appropriate documentation.
3. Students requesting accommodations through Access office / Student Services must notify faculty of accommodations requests no later than 2 working days prior to the exam.
 - a. **Student accommodation requests should always be discussed with faculty prior to testing. Open communication between faculty, students, and the testing center staff increases the likelihood that the students' needs are met.**
 - b. **In accordance with college policy, accommodation requests are not retroactive. If requests are not timely made and approved, retesting with accommodations is not permitted.**
4. Study aids are not allowed in the test seating area. All notebooks, textbooks, and classroom notes must be left away from the seating area prior to taking a seat for the exam.
5. No food, drinks, purses, wallets, beepers, sunglasses, cell phones, smart watches, etc. or any other personal electronic devices are not allowed in the test seating area.
6. Approved note taking items (pens, pencils, scratch paper, whiteboards, etc.) will be provided by the testing faculty
7. Outerwear may be worn at the direction / discretion at the testing faculty. Testing faculty may request excessive clothing be stowed away during testing (provisions are made for religious/cultural dress but should be addressed with the faculty prior to the student arriving for a test).
8. Students may not leave the seating area without direct permission from the instructor.
9. Students may be subjected to assigned seating.
10. Students not adhering to the testing policy may not be allowed to test.
11. Academic dishonesty will not be tolerated. If cheating is suspected, the student will have their test stopped immediately and will be removed from the testing environment.
 - a. The faculty member and student will follow the process related to violation of academic integrity in the classroom found in Administrative Procedure G.13.01
 - b. Academic dishonesty is grounds for formal reprimand, a grade of "0" for the items in question and/or dismissal from the program.

Grounds for receiving a "0" grade:

1. Copying and removing examination items.
2. Giving or receiving assistance of any kind to or from other students during the exam.
3. Failure to abide by any of the stated policies can be grounds for discipline up to and including receiving a grade of "0" for the exam.

District Test Review Policy (Updated 12/2022)

1. All students have a right to review any (and all) of their completed course work.

2. When utilizing computerized testing, test reviews (with rationales) will be provided immediately after completing testing when available and appropriate. ***See course syllabus for exceptions (i.e., final exams, standardized testing, etc.).**
3. When requested, a 1:1 test review may be held when and where mutually agreed upon between the faculty and student.
4. Academic dishonesty will not be tolerated. Any attempt to copy, record, or remove examination items during the review is prohibited. If a student is observed copying test items or recording the test review, the student will have their test review stopped immediately and will be removed from the testing review environment.
5. Notetaking aids during test review may be used at the testing faculty's direction / discretion.
6. Faculty may ask students to remove excessive outwear or personal items from the review area if a concern that test integrity may be compromised from outside resources (i.e., cell phone, computer, etc.).
7. Students not adhering to the testing review policy may not be allowed to review their test.

Student Services and College Policies

Access Office

The Access Office-Disability Support Services- has been designated by the College as the primary office to guide, counsel, and assist students with disabilities. If you receive services through the Access Office and require accommodation for class, please make an appointment with an instructor as soon as possible to discuss your approved accommodation needs. Bring your "Instructor Notification Memo" provided by the Access Office to the appointment. The instructor will hold any information you share in strict confidence unless you give permission to do otherwise.

If you have not contacted the Access Office and have reasonable accommodation needs (e.g., volunteer note taker, extended time for tests, seating arrangements), an instructor will be happy to refer you. The Access Office will require appropriate documentation on disability. If you wish to receive accommodation in a class, you must register with the Access Office. Registration with the Access Office is voluntary for people with disabilities but is a requirement for receiving accommodation.

Student Rights and Responsibilities

Students' rights and responsibilities are available online at <https://stlcc.edu/college-policy-procedures/>. Upon enrollment in the college, each student assumes an obligation to conduct themselves in a manner compatible with the college's function as an educational institution and to obey the laws enacted by federal, state, and local governments. If this obligation is neglected or ignored by the student, the College must, in the interest of fulfilling its functions, institute appropriate disciplinary action.

Students who are parents have the responsibility to arrange suitable care for their children while they attend classes. Students are not permitted to bring children to class, nor should children be left unattended in hallways, offices, or on campus. The College reserves the right to protect the safety and welfare of unattended children.

In addition, misconduct that may subject a student to disciplinary action includes the following:

1. Dishonesty such as cheating, plagiarism, or knowingly furnishing false information to the college.
2. Forgery, alteration, or misuse of college documents, records, or identification.
3. Hazing, which is defined as any act that injures, frightens, endangers, or degrades an individual.
4. Obstruction or disruption of teaching, research, administration, disciplinary procedures, or other college-authorized activities.
5. Sexual Harassment of any person on college property or at other college authorized activities.
6. Physical Abuse of any person on college property or at college authorized activities or conduct that threatens or endangers the health or safety of another person.
7. Theft or damage to college property or property of others on college premises or at college authorized activities.
8. Unauthorized entry to or use of college facilities.
9. Violation of law or of college policies or procedures or campus rules or regulations (herein collectively called "Regulations").
10. Use of, being under the influence of, or distribution of alcohol or controlled substances on college property or at college authorized activities except as permitted under the Board policy entitled "Food Service Facilities."
11. Disorderly conduct, breach of the peace, aiding or inciting another to breach the peace, or infringement upon the rights or defamation of another person(s) either on college property or at college authorized activities.
12. Failure to comply with directions of a college official acting in the performance of their duties.
13. Possession or use of a firearm, explosive, dangerous chemical, or other weapon or anything that could be construed as a weapon on college property or at college authorized activities, except as required by law and permitted by regulations. Law enforcement officers who are enrolled and are on campus to attend classes or study are to take no action to enforce any regulations, except as required by law. Alleged violations must be reported to campus police.

Students are protected against race and ethnicity discrimination by Title VI of the Civil Rights Act of 1964, against sex discrimination, including sexual harassment by Title IX of the Education Amendments of 1972 and against discrimination based on sexual orientation, religion, age, and status as a disabled or Vietnam-era veteran by board policy. Students who believe they have been subjected to discrimination should use the procedures described in Board of Trustees Policy B9 and Administrative Procedures G15.

Students are protected against discrimination based upon reason of disability by the Americans with Disabilities Act (ADA) of 1990 and section 504 of the Rehabilitation Act of 1973. Students who believe they have been discriminated against based upon reason of disability should use the procedures described in Board of Trustees Policy G8 and Administrative Procedure G6.

Students who believe they are being sexually harassed are encouraged to discuss the matter first with one of the sexual harassment advisors on their campus. The Counseling Department can assist with locating the sexual harassment advisors.

Non-Academic Appeals

Students' *non-academic* rights and responsibilities are listed at <https://stlcc.edu/college-policy-procedures/student-conduct-rights-and-responsibilities/> Students are expected to comply with the responsibilities and follow proper procedures as identified on the website. Disciplinary actions involving alleged violations of a student's responsibilities will follow the procedure. A student may appeal an alleged violation of her/his non-academic rights by following the proper procedure for non-academic appeals.

Student Academic Rights and Responsibilities

Problems that develop between an instructor and a student often result from a single misunderstanding of what is expected from the other person. Direct communication between the student and instructor will usually resolve these matters. Therefore, the following regulations incorporate a definition of student academic rights and responsibilities and both formal and informal means of due process and conflict resolution.

Student Academic Rights

Students have the right to:

1. Access scheduled class meetings and appropriate instructional support services.
2. A syllabus describing course objectives; units of subject matter to be provided; evaluation reports; and rules of attendance, grading, and conduct.
3. Instruction that begins promptly; is presented in a clear and concise manner; and provides relevant structured activities consistent with the contact hour requirements of the course.
4. Classroom instruction, assignments and evaluations that are consistent with the general course description and the specifications of the syllabus.
5. Be treated in a humane, ethical, and professional manner both in the classroom and in all communication and contact with the instructor, and other staff and students.

Student Academic Responsibilities

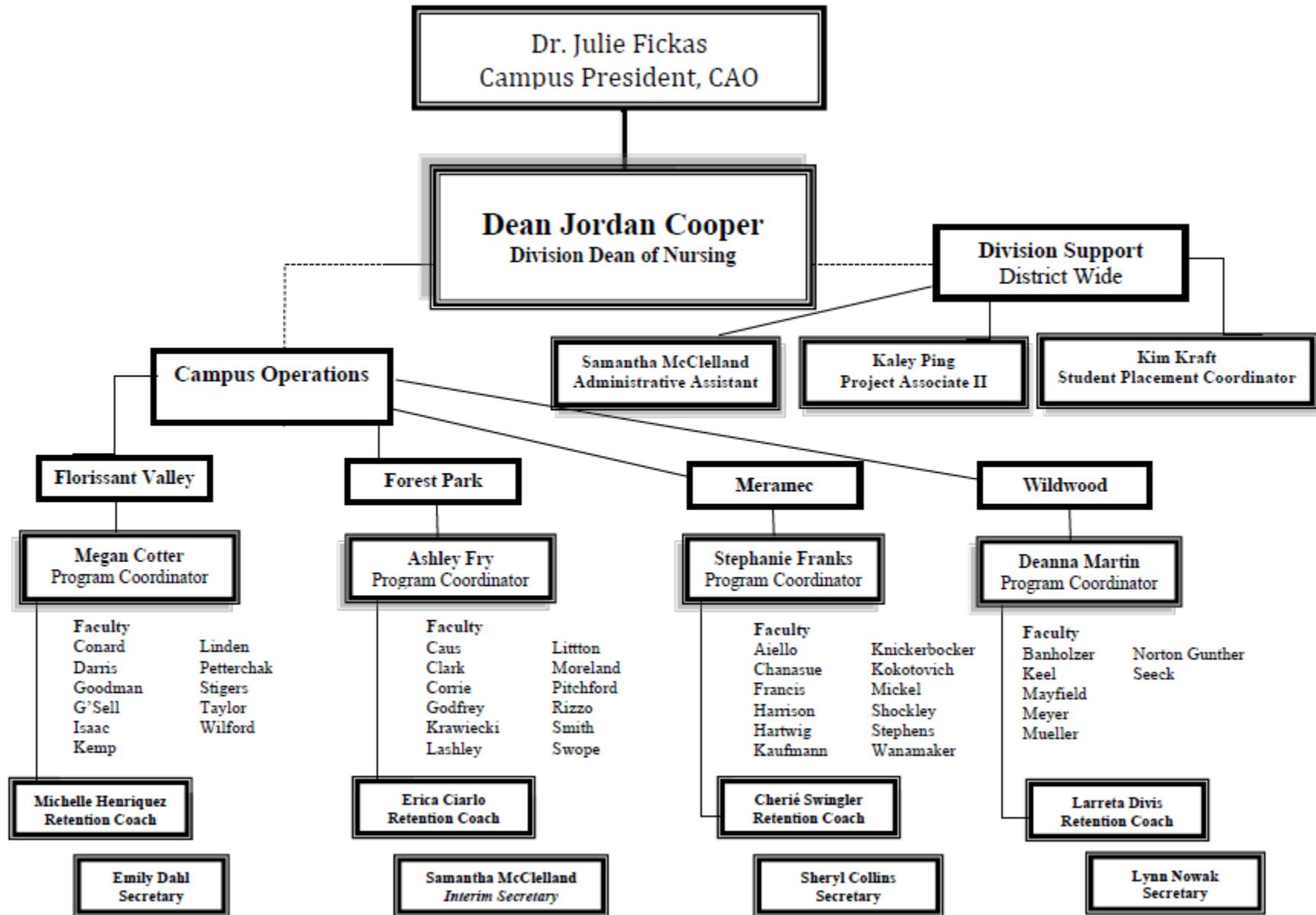
Students shall be responsible for:

1. Selecting a program of study that is consistent with her/his interests, skills, and abilities.
2. Selecting courses that are consistent with her/his program objectives and readiness level.
3. Enrolling for a schedule of courses in accordance with the time and effort they will allocate to academic requirements.
4. Being punctual and attending classes.
5. Being attentive and appropriately participating in class activities.
6. Completing all class assignments as directed by the instructor.
7. Consulting with the instructor as soon as possible if problems arise.
8. Complying with official announcements.
9. Seeking appropriate support services to improve her/his level of academic achievement and to enhance the quality of college life.
10. Behaving in a humane and ethical manner both in the classroom and in all communication and contact with the instructor, other staff members, and students.

Academic Appeals

Students' academic rights and responsibilities are listed online at <https://stlcc.edu/college-policy-procedures/academic-rights-and-responsibilities/>. A student may appeal an alleged violation of her/his academic rights by following the proper procedure as identified online.

STLCC Nursing Program Faculty and Staff



Division-Wide Team

Jordan Cooper MSN, RN, FNP-BC – Division Dean of Nursing

ADN, St. Louis Community College Florissant Valley

BSN, Maryville University

MSN, Walden University

Phone: 314-644-9315

email: jcooper178@stlcc.edu

Kim Kraft MSN, RN – Student Placement Coordinator

Diploma, St. John's Hospital School of Nursing

BSN, St. Louis University

MSN, Gonzaga University

Phone: 314-644-9358

email: kkraft5@stlcc.edu

Kaley Ping MS.Ed – Project Associate II

BA, Valparaiso University

MS.Ed, Southern Illinois University – Edwardsville

Phone: 314-644-9202

email: kbuck19@stlcc.edu

Samantha McClelland – Administrative Assistant

Phone: 314-644-9313

email: smcclelland7@stlcc.edu

Florissant Valley

Megan Cotter RN, Instructor II – FV Campus Nursing Program Coordinator
AS, Lewis and Clark Community College
ADN, St. Louis Community College Florissant Valley
BSN, Southern Illinois University Edwardsville
MSN, Maryville University
Phone: 314-513-4379 **email:** mcotter7@stlcc.edu

Aja Conard MSN, RN, Instructor II
ADN, St. Louis Community College Florissant Valley
BSN, Central Methodist University
MSN, Central Methodist University
Phone: 314-513-4326 **email:** aconard1@stlcc.edu

Maria Darris MSN, RN, Assistant Professor
LPN, United States Army
ADN, St. Louis Community College Florissant Valley
BSN, University of Missouri St. Louis
MSN, University of Missouri St. Louis
Phone: 314-513-4815 **email:** mdarris@stlcc.edu

Tabitha Goodman MSN, RN, Instructor II
ADN, Lewis & Clark Community College
BSN, Southern Illinois University Edwardsville
MSN, McKendree University
Phone: 314-513-4676 **email:** tgoodman23@stlcc.edu

Joanne G'Sell MSN, RN, Assistant Professor
Diploma, Deaconess School of Nursing
BSN, Maryville University
MSN, St. Louis University
Phone: 314-513-4008 **email:** jgsell3@stlcc.edu

Efevwia (Efe) Isaac MSN, RN, Assistant Professor
ADN, St. Louis College of Health Careers
BSN, Webster University
MSN, Webster University
Phone: 314-513-4816 **email:** eisaac@stlcc.edu

Christal Kemp MSN, RN, Assistant Professor
ADN, Barnes-Jewish Hospital School of Nursing
BSN, Goldfarb School of Nursing
MSN, Goldfarb School of Nursing
Phone: 314-513-4816 **email:** ckemp19@stlcc.edu

Paula Linden MSN, RN, Assistant Professor
BSN, Chamberlain College of Nursing
MSN, Chamberlain College of Nursing
Phone: 314-513-4394 **email:** plinden@stlcc.edu

Maria (Michelle) Petterchak MSN, RN, Associate Professor
BSN, St. Francis College of Nursing
MSN, University of Missouri St. Louis
Phone: 314-513-4416 **email:** mwhite56@stlcc.edu

Robert (Luke) Stigers MSN, RN, Assistant Professor
BSN, King College
MSN, St. Louis University
Phone: 314-513-4004 **email:** rstigers@stlcc.edu

Ashley Taylor MSN, RN, Instructor II
BSN, Southern Illinois University-Edwardsville
MSN, Webster University
Phone: 314-513-4004 **email:** ahayes125@stlcc.edu

Kirsten Wilford BSN, RN, Instructor II
BSN, University of Missouri- Columbia
Phone: 314-513-4817 **email:** kwilford@stlcc.edu

FLORISSANT VALLEY CAMPUS NURSING RETENTION COACH
Michelle Henriquez
BS, Lindenwood University
MA, Lindenwood University
Phone: 314-513-4134 **email:** mhenriquez@stlcc.edu

FLORISSANT VALLEY CAMPUS NURSING DEPARTMENT SECRETARY
Emily Dahl BA.Ed
BA, University of Missouri- St. Louis
Phone: 314-513-4539 **email:** egrandt@stlcc.edu

Forest Park

Ashley Fry MSN, RN, Assistant Professor – FP Campus Nursing Program Coordinator
ADN, St. Louis Community College Meramec
BSN, Goldfarb School of Nursing
MSN Walden University
Phone: 314-644-9068 **email:** aramsey1@stlcc.edu

Nadja Caus MSN, RN, Assistant Professor
ADN, St. Louis Community College Forest Park
BSN, Goldfarb School of Nursing
MSN, Webster University
Phone: 314-644-9070 **email:** ncaus@stlcc.edu

Dr. Julie Clark DNP, RN, Assistant Professor
BSN, Truman State University
MSN, Goldfarb School of Nursing
DNP, University of Missouri- Kansas City
Phone: 314-644-9942 **email:**

Mackenzie Corrie MSN, RN, Instructor II
BA, Augustana College
BSN, Lakeview College of Nursing
MSN, Webster University
Phone: 314-644-9316 **email:** mcorie@stlcc.edu

Dr. Carolyn Godfrey PhD, MSN, RN, Professor
BSN, Central Missouri State University
MSN, Southern Illinois University Edwardsville
PhD, Capella University
Phone: 314-644-9346 **email:** cgodfrey@stlcc.edu

Gintare (Gin) Litton MSN, RN, Instructor II
ADN, Walters State Community College
BSN, East Tennessee State University
MSN, Webster University
Phone: 314-644-9883 **email:** glitton2@stlcc.edu

Jeni Krawiecki, MSN, RN, Instructor II
BSN, Walden University
MSN, Southern Illinois University-Edwardsville
Phone: 314-644-9314 **email:**

Karma Lashley MSN, RN, Instructor II
BSN, Goldfarb School of Nursing
MSN, Webster University
Phone: 314-644-9864 **email:** klashley6@stlcc.edu

Lisa Moreland MSN, RN, Professor
BSN, Avila College
MSN, Southern Illinois University - Edwardsville
Phone: 314-644-9774 **email:** lmoreland@stlcc.edu

Stephen Pitchford MSN, RN, Assistant Professor
ADN, St. Louis Community College Forest Park
BSN, St. Louis University
MSN, St. Louis University
Phone: 314-644-9347 **email:** spitchford5@stlcc.edu

Kathleen (Kathy) Rizzo MSN, RN, Professor
Diploma, Missouri Baptist
BSN, University of Missouri St Louis
MSN, University of Missouri St Louis
Phone: 314-644-9070 **email:** krizzo@stlcc.edu

Michelle Smith MSN, RN, Assistant Professor
ADN, Sanford Brown College
BSN, Webster University
MSN, Webster University
Phone: 314-644-9572 **email:** mwhitehead13@stlcc.edu

Clarissa (Claire) Swope MSN, RN, Assistant Professor
BSN, University of Missouri St. Louis
MSN, Webster University
Phone: 314-644-9905 **email:** cswope1@stlcc.edu

NURSING RETENTION COACH

Erica Ciarlo LPC, NCC
AS, Corning Community College
BA, Boston College
MSEd, Northern Illinois University
Phone: 314-951-9861 **email:** eciarlo@stlcc.edu

FOREST PARK CAMPUS NURSING DEPARTMENT SECRETARY

Vacant
Phone: (314) 644-9313

Meramec

Stephanie Franks MSN, RN, Professor – MC Campus Nursing Program Coordinator
BSN, Southeast Missouri State University
MSN, Webster University
Phone: 314-984-7756 **email:** sfranks@stlcc.edu

Janis Aiello MSN, RN, Professor
ADN, St. Louis Community College Meramec
BSN, University of Missouri St. Louis
MSN, University of Missouri Kansas City
Phone: 314-984-7457 **email:** jaiello6@stlcc.edu

Deborah Chanasue MSC, MSN, RN, Professor
BSN, St. Louis University
MSN, Webster University
MSC, Southern Illinois University
Phone: 314-984-7758 **email:** dchanasue@stlcc.edu

Samantha (Sam) Francis MSN, RN, Instructor II
BSN, Maryville University
MSN Western Governor's University
Phone: 314-984-7455 **email:** sfrancis32@stlcc.edu

Stacie Harrison MSN, RN, Instructor II
ADN, St. Louis Community College Meramec
BSN, Central Methodist University
MSN, Central Methodist University
Phone: 314-984-7227 **email:** sharison67@stlcc.edu

Cynthia (Cindy) Hartwig MSN, RN, Professor
BSN, University of Missouri Columbia
MSN, Webster University
Phone: 314-984-7285 **email:** chartwig@stlcc.edu

Dr. Lacey Kaufmann PhD, RN, Professor
LPN, Jefferson College
ADN, Jefferson College
BSN, Central Methodist University
MSN, Webster University
PhD, University of Missouri St. Louis
Phone: 314-984-7454 **email:** lkaufmann2@stlcc.edu

Deborah Knickerbocker MSN, RN, Professor
BSN, University of Illinois
MSN, Southern Illinois University Edwardsville.
Phone: 314-984-7760 **email:** dknickerbocker1@stlcc.edu

Lisa Kokotovich MSN, RN, Professor
BSN, St. Louis University
BA, St. Louis University
MSN, Southern Illinois University Edwardsville
Phone: 314-984-7456 **email:** lkokotovich@stlcc.edu

Janene Mickel MSN, RN, Assistant Professor
Diploma, Methodist College of Nursing
BSN, Creighton University
MSN, Western Governor's University
Phone: (314) 984-7755 **email:** jmickel1@stlcc.edu

James Shockley MSN, RN, Associate Professor
LPN, United States Army
ADN, Sanford Brown
BSN, Maryville University
MSN, Maryville University
Phone: 314-984-7754 **email:** jshockley2@stlcc.edu

Christine Stephens MSN, RN, Assistant Professor
Diploma, Deaconess College of Nursing
BSN, Deaconess College of Nursing
MSN, St. Louis University
Phone: 314-984-7750 **email:** cstephens69@stlcc.edu

Shayna Wanamaker MSN, RN, Instructor II
ADN, St. Louis Community College- Florissant Valley
BSN, Western Governors University
MSN, Western Governors University
Phone: TBD **email:** sfeldman25@stlcc.edu

NURSING RETENTION COACH

Dr. Chérie Swingler, LPC
BA, University of Missouri Columbia
MA, Lindenwood
PhD, Capella University
Phone: 314-984-7202 **email:** cswingler1@stlcc.edu

MERAMEC CAMPUS NURSING DEPARTMENT SECRETARY

Sheryl Collins
BS, Lindenwood University, Marketing
Phone: 314-984-7759 **email:** scollins12@stlcc.edu

Wildwood

Deanna Martin PhD, RN, Assistant Professor – WW Campus Nursing Program Coordinator
BSN, Mennonite College of Nursing at Illinois State University
MSN, Southern Illinois University Edwardsville
PhD, Capella University
Phone: 636-422-2422 **email:** dmartin383@stlcc.edu

Lea Anne Banholzer MSN, RN, Assistant Professor
ADN, St. Louis Community College Florissant Valley
BSN, University of Central Missouri
MSN, Webster University
Phone: 636-422-2033 **email:** lbaholzer@stlcc.edu

Regina (Gina) Keel MSN, RN, Assistant Professor
BSN, Central Methodist University
MSN, Central Methodist University
Phone: 636-422-2423 **email:** rkeel2@stlcc.edu

Patrick Mayfield MSN, RN, Assistant Professor
Diploma, Missouri Baptist School of Nursing
BSN, Webster University
MSN, Webster University
Phone: 636-422-2020 **email:** pmayfield7@stlcc.edu

Stacie Meyer BSN, RN, Instructor II
ADN, St. Louis Community College Forest Park
BSN, Central Methodist University
MSN, (in progress)
Phone: 314-644-2424 **email:** sstordahl@stlcc.edu

Karen Mueller MSN, RN, Associate Professor
ADN, Maryville University
BSN, Webster University
MSN, University of Phoenix
Phone: 314-644-9683 **email:** kmueller90@stlcc.edu

April Norton Gunther MSN, RN, Assistant Professor
ADN, Owens Community College
BSN, University of Phoenix
MSN, University of Phoenix
Phone: 636-422-2421 **email:** anortongunther@stlcc.edu

Jessica Seeck MSN, RN, Instructor II
AA, Jefferson College
BSN, Chamberlain College
MSN, Webster University
Phone: **email:** jseeck3@stlcc.edu

NURSING RETENTION COACH

Larreta Divis MS
BS in Psychology, Missouri State University
MS in Guidance and Counseling, Missouri State University
Phone: 636-422-2425 **email:**

WILDWOOD CAMPUS NURSING DEPARTMENT SECRETARY

Violet (Lynn) Nowak
Phone: 636-422-2420 **email:** vnowak2@stlcc.edu

Appendix A

Financial Information

ST. LOUIS COMMUNITY COLLEGE - NURSING PROGRAM
 Estimated Program Expenses) – Amounts Subject to Change
(Effective August 1, 2022)

Pre-Entry: The following six items are required to be completed within six months prior to the first day of Fundamentals of Nursing, NUR:151, or six months prior to first semester of entering the program. LPN Bridge Option students should be aware that these costs are an approximation of the Nursing Program as a whole, broken down by semester as close to actual funds as possible. The Nursing Department will have specific deadlines for submitting documentation of these six items. Failure to meet these deadlines will result in removal of your name from the admission process.

<i>Pre-Entry Estimated Expenses</i>	<i>\$1,529.00</i>
Clinical Compliance Tracker (includes background check, drug screen, immunization/clinical requirements)	84.00
Missouri Department of Health & Senior Services Family Care Safety Registry (unless currently registered)	15.00
Health Exam (must be on STLCC's Nursing Physical Form)	50.00
Immunizations or Titers (If no documented history of immunizations, then you must have titer results showing immunity or receive the immunizations.)	700.00
Health Insurance (must maintain throughout program)	600.00
American Heart Assoc. BLS Provider (includes adult, child/infant CPR, and AED with hands-on skill check)	80.00

<i>First Semester</i>	
In-District Maintenance Fees (7 credit hours@\$122.00/cr.hr.) **	854.00
Nursing Books (Required)*	265.00
* See course syllabus for additional recommended material (estimate not provided)	
Lab Kit	130.00
Uniforms (scrub top & bottom)	75.00
Black Non-permeable Shoes (No canvas, mesh or open toe/heel)	75.00
Stethoscope	30.00
Lab Coat (Optional per agency policy)	40.00
Watch with Ability to Count Seconds	30.00
Bandage Scissors	10.00
Assessment Exam (ATI)	430.00
Student Nurse Association (SNA) Dues (Optional)	5.00
<i>First Semester Estimated Expenses</i>	<i>\$1,944.00</i>

Second Semester	
In-District Maintenance Fees (10 credit hours@\$122.00/cr.hr.) **	1220.00
Personal Transportation (approximate)	600.00
Nursing Books (Required)*	250.00
* See course syllabus for additional recommended material (estimate not provided)	
Exam Package (ATI)	370.00
Lab Kit	150.00
Student Nurse Association (SNA) Dues (Optional)	5.00
Second Semester Estimated Expenses	\$2,595.00

Between Second and Third Semester in the Nursing Program	
Health Insurance (must maintain throughout program)	600.00
Chest X-ray if History of (+) TB test	50.00
Between Second and Third Semester Estimated Expenses	\$ 650.00

Third Semester	
In-District Maintenance Fees (10 credit hours@\$122.00/cr.hr.) **	1220.00
Personal Transportation (approximate)	600.00
Nursing Books (Required)*	200.00
* See course syllabus for additional recommended material (estimate not provided)	
Fingerprinting Fee (NCLEX Application)	60.00
State Board License Application Fee	0.00
Student Nurse Association (SNA) Dues (Optional)	5.00
Exam Package (ATI)	370.00
Third Semester Estimated Expenses	\$2,455.00

Fourth Semester	
In-District Maintenance Fees (11 credit hours@\$122.00/cr.hr.) **	1342.00
Personal Transportation (approximate)	600.00
NCLEX-RN Exam Registration Fee	200.00
STLCC Transcript sent to State Board Assessment	10.00
RN Review Course (optional)	450.00
Exam Package (ATI)	370.00
Student Nurse Association (SNA) Dues (optional)	5.00
School Pin (optional)	100.00
Graduation Picture Composite	30.00
Graduation Robe Rental (optional)	25.00
Fourth Semester Estimated Expenses	\$3,132.00

Total Estimated Expenses for Program	\$12305.00
---	-------------------

Appendix B

Handbook Acknowledgement

Nursing Program Handbook Acknowledgement

I have been provided access to the St. Louis Community College Nursing Program Handbook and the information and policies contained within the handbook. I understand that I am responsible for making myself aware of and for following the information, policies, and guidelines written within the St. Louis Community College Nursing Program Handbook.

Print Name: _____

Signature: _____

Date: _____

A#: _____

STLCC E-Mail: _____@my.stlcc.edu

Latex Waiver Form

I have read the information regarding the use of latex products, latex allergies, and potential allergic effects due to exposure to latex products.

I understand the potential for untoward reactions with personal exposure to latex in various settings where I may be assigned as a student. I will use latex-free products as a preventive intervention.

My signature indicates that I understand the potential for and the risks of latex exposure and that I wish to continue my education at STLCC.

Print Name: _____

Signature: _____

Date: _____

A#: _____

STLCC E-Mail: _____@my.stlcc.edu

Appendix C

Diversity, Inclusion, and Non-Discrimination Statement

St. Louis Community College is committed to creating inclusive, welcoming, and respectful learning and working environments focused on the needs of our diverse communities. The College does not discriminate on the basis of race, color, national origin, ancestry, religion, sex, pregnancy, sexual orientation, gender identity, gender expression, age, disability, protected veteran status, and any other status protected by applicable state or federal law. The College's Nondiscrimination policies apply to any phase of its employment process, any phase of its admission, or financial aid programs, and all of its educational programs or activities.

Student inquiries concerning discrimination or harassment, and the procedure for complaints of discrimination or harassment may be made to:

Shannon Nicholson

Director for Community Standards / Title IX Coordinator

E-mail: snicholson29@stlcc.edu

Disability Resources and Access Office Information

STLCC is committed to providing all students equal access to learning opportunities. Access Office staff, available on each campus, work with students who have disabilities to provide and/or arrange academic accommodations. Students who have, or think they may have, a disability are encouraged to contact the campus Access Office: Florissant Valley: 314-513-4551 or FVAccess@stlcc.edu; Forest Park & Harrison Center: 314-644-9039 or FPAccess@stlcc.edu; Meramec & South County: 314-984-7673 or MCAccess@stlcc.edu; Wildwood: 636-422-2000 or WWAccess@stlcc.edu; Online: 314-513-4771 or SFoster@stlcc.edu

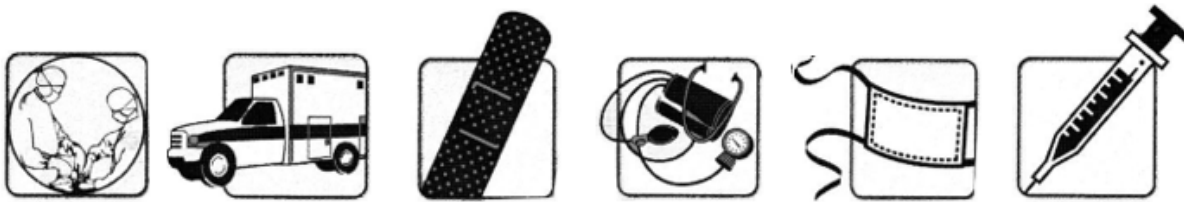
Students with academic accommodations are responsible for providing their professors with Instructor Memos and should do so early in the course. For more information, see Access services (<https://www.stlcc.edu/student-support/disability-services/>).

Title IX

Discrimination includes any form of unequal treatment on the basis of sex, sexual orientation or gender expression such as denial of opportunities, harassment, and violence. Sex based violence includes sexual assault, sexual harassment, dating violence, domestic violence and stalking. If you experience discrimination in any of these forms, you are encouraged to report the incident to the Title IX Coordinator, or campus-based Title IX Investigators. To learn more, including information on campus and community resources, go to STLCC's Sexual Misconduct Policy (<https://www.stlcc.edu/docs/policies-and-procedures/sexual-misconduct-guidelines.pdf>).

NCLEX TESTING ACCOMMODATIONS: Testing accommodations for otherwise qualified candidates can be provided only with the authorization of your board of nursing/regulatory body (BON/RB). Make a written request for accommodations to your BON/RB. Your request must comply with requirements established by your BON/RB for candidates requesting testing accommodations. Send your request to your BON/RB as early as possible so that, if approved, the testing accommodations can be made in a timely manner. Do not schedule an appointment to take the NCLEX until you have received written confirmation of your accommodations and your ATT email listing the granted accommodations. Candidates approved for testing with accommodations must schedule their testing appointment by calling Pearson VUE NCLEX Candidate Services at the telephone number listed on their ATT and asking for the NCLEX Accommodations Coordinator. Candidates with accommodations cannot cancel their accommodations at the time of their appointment. Candidates who seek to test with accommodations cannot schedule their appointments through the NCLEX Candidate website.

Additional information from the Missouri State Board of Nursing for Nursing students with disabilities is available at <http://pr.mo.gov/boards/nursing/NursingADAPositionPaper.pdf> and includes the Position Paper – Requests for Modifications from Disabled Candidates.



FLORISSANT VALLEY FOREST PARK MERAMEC WILDWOOD